



Rumbleseat Review



www.wichitaas.com

WICHITA A'S MODEL A FORD CLUB

Volume 40 Issue 2

P.O. Box 25, Wichita, KS

February 2025

February 2025

S	M	T	W	TH	F	S
						1
2	3	4	5	6	7	8
9	10	11	12	13	14	15
16	17	18	19	20	21	22
23	24	25	26	27	28	

March 2025

S	M	T	W	TH	F	S
						1
2	3	4	5	6	7	8
9	10	11	12	13	14	15
16	17	18	19	20	21	22
23	24	25	26	27	28	29
30	31					

April 2025

S	M	T	W	TH	F	S
		1	2	3	4	5
6	7	8	9	10	11	12
13	14	15	16	17	18	19
20	21	22	23	24	25	26
27	28	29	30	31		

February Refreshments

Beverage
Marcia Kurtz
Treats
Gina McNeal
Dawna Ruggles
Kathy James

CLUB TOURS & MEETING SCHEDULE

February 2025

24..... Pizza Party for President's Day.....Richard Kibbe
24..... Club Meeting at Minisa Park 704 W. 13th.....7:00PM

March 2025

6..... Coffee & Donuts for Men.....Tom Ruggles
7..... Newsletter Deadline...sheorr@sbcglobal.net.....Sheila Orr
8..... I Hear your "A" talking.....Grabendike
16..... Oh go fly "A" kite.....Chenoweth
24..... Club Meeting at Minisa Park 704 W. 13th.....7:00PM

April 2025

3..... Coffee & Donuts for Men.....Tom Ruggles
11..... Newsletter Deadline...sheorr@sbcglobal.net.....Sheila Orr
19..... How far can "A" Monarch Fly.....Speck/Adams
28..... Club Meeting at Minisa Park 704 W. 13th.....7:00PM

What's Inside

Calendar	1
President & Secretary Notes	2
Announcements	3
Future Events	4-5
ERA Fashion	5
2025 Tour Schedule	6
MAFFI	7
Tech Article	8
Conversion Chart	9
Swap Meet/Nat'l Schedule	10

The Wichita A's meet on the 4th Monday of the month except December. We do not hold a meeting during the month of December. Other meeting changes will be published in the newsletter prior to the scheduled meeting. The meetings are held at Minisa Park, 704 W. 13th, Wichita, KS. Meeting time is 7:00 PM unless otherwise noted in the newsletter.

Wichita A's Model A Club Meeting-January 27, 2025

CALL MEETING TO ORDER AND FLAG SALUTE – President, **Frank Chenoweth**, called the meeting to order and led the group in the Pledge of Allegiance.

NEW MEMBERS/GUESTS - None.

SUNSHINE REPORT - It was reported that **Jim Broadhead** is still having issues with his foot.

James Sharp is doing better and is anxious for warmer weather that would allow him to get out.

STORY OF THE MONTH - **Frank Chenoweth** told the story of the month.

MARC and MAFCA REPORT - No report.

MINUTES (November 24, 2024) - **Jim Nungesser** moved that the minutes be accepted. **Richard Sanchez** seconded and the motion was carried.

TREASURER'S REPORT – **Claudia Ellerman** gave the treasurer's report.

WICHITA AREA CAR CLUB COUNCIL - No report.

CORRESPONDENCE - **Frank** reported that a card of thanks was received from the **Gil and Melanie Adams** family. The family was grateful for those joining in the 90th birthday celebration for Gil's Dad, **Gilbert Adams**.

PAST TOURS/EVENTS - **Frank Chenoweth** expressed appreciation for organizers of the following club events:

- A. Christmas party that **Gina McNeal** and **Claudia Ellerman** planned.
- B. Ladies Christmas luncheon planned by **Barb Phye** and **Doris Jean Ludlow**.
- C. New Years Day tour of the Benjamin Hills area by **Don and Terry Grabendike**.

FUTURE TOURS -The next *COFFEE AND DONUTS* at **Tom Ruggles** will be on Thurs., Feb. 6th.

OLD BUSINESS - None

NEW BUSINESS - **Frank Chenoweth** summarized the December board meeting.

- A. A MAFFI brick will be purchased in **Dennis and Claudia Ellerman's** honor.
- B. The club wheel straightener will be moved from **Tom Ruggles** possession to **Mike James**. It will continue to be available to all club members for their use.
- C. The club allowance for tours will be \$20 per day for a maximum of three days. Additional costs will be charged to club members as determined by the tour leaders.
- D. **Gary Hileman** encouraged everyone to receive the shingles vaccine. Twenty years later, **Gary** advised that he still suffers from the late effects of having had shingles.

REFRESHMENTS - Provided by **Linda Kibbe Jeannie Speck, Rita Hoffmans** and **Susan Stone**.

PROGRAM - In **Don Grabendikes** absence, (due to not feeling well), **Frank Chenoweth** led the discussion on proposed 2025 Wichita Model A Club tours/events. The list will be published in the newsletter.

ADJOURNMENT – Meeting was adjourned.

Submitted by **Kathy James**, Secretary

Presidents Message

President's Message

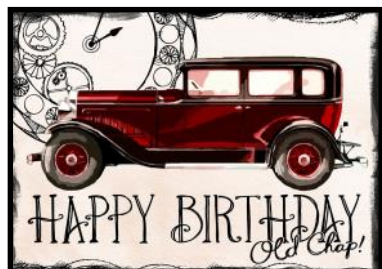
Where does the time go. When February gets here we are one month closer to spring and an opportunity to "Drive the A". The January meeting program was the Tour Planning for 2025. There was a scheduled tour for each month. Please make notice of the schedule in the newsletter and put it on your refrigerator. If you don't participate in the touring, you are missing an opportunity to have fun and know more about your fellow club members.

A pizza party is being planned for February and the Third annual Fly "A" Kite Day is scheduled for March 16. There will be more in the next newsletter.

If you know of members who are not attending monthly meeting or tours please encourage them to attend. Think about giving those who are having health issues, give them a call of encouragement.

Frank Chenoweth, President





MARCH BIRTHDAY'S

- 1 Frank Chenoweth
- 1 Jim Nungesser
- 1 Rick Speck
- 3 Carolyn Nungesser
- 4 JoAnn Tackett
- 9 Bruce Herrington
- 10 Gary Cox
- 10 Barbara Moore
- 12 Eleanor Youmans
- 14 John Kurtz
- 15 Jerry Allen
- 19 Doris Jean Ludlow
- 21 Roger Graham
- 27 Page Whiting
- 28 Bunny Broeckelman
- 28 Bob Broeckelman
- 28 Eleanor Youmans
- 28 Amy Dreiling
- 31 Richard Ashford

MAFFI BRICK COLECTION

The starting balance in the headlight was \$98.10. At the January meeting, \$14.00 was collected. The balance is \$112.10.

Denny Ellerman



Announcement's

Thank You

Thank you to everyone who came to celebrate Dad's (**Gilbert Adams**) 90th birthday with him. It made his day and he was encouraged through the many conversations he had with all of you. It's nice to have so many supportive friends.

Gil, Melanie and Family

FOR SALE

1930 Ford Phaeton
\$37,000
Call **Kevin Moore**
316-

1929 Ford "Shay"
\$17,000
Call **Richard Sanchez**
316



EDITORS NOTES

Just a short note! Hope everyone will be at the meeting in February -PIZZA PARTY & meeting. Looks like the members and tour Chairman, **Don Grabendike** came up with some great ideas for touring this year. Looking forward to getting back out in the Model A.!

Looking forward to Spring and nicer weather! Hope you have a great Valentine's Day.

Sheila Orr Editor

2025 Refreshments



February

Beverage
Marcia Kurtz

Treats
Gina McNeal
Dawna Ruggles
Kathy James

March

Beverages
Doris Jean Ludlow

Treats
Bonita Graham
Donna Hileman
Carolyn Nungesser

April

Beverages
Brenda Broadhead

Treats
JoAnn Bruce
Debbie Rice
Jane McLaughlin

Newsletter Deadline

Friday, March 7, 2025
Sheila Orr
sheorr@sbcglobal.net or
316-207-8878

FUTURE EVENTS

PRESIDENT'S DAY PIZZA PARTY



During the February Meeting we are celebrating President's Day by having a Pizza Party. So bring your hungry bodies and eat pizza and join in the February meeting!

Richard Kibbe



Coffee & Donuts



Men's Coffee and Donuts will be March 6, 2025 at **Tom Ruggles** garage located at 5702 N. Legion St. Time is from 8AM to 10AM. Come join the group and learn how to maintain your Model A and have great fellowship along the way!

Any questions, call **Tom Ruggles** at 316-



How Far Can "A" Monarch Fly

Come join us for a Saturday Model A morning trip to Hutchinson Cosmosphere Museum to see an interesting documentary on the Monarch Butterfly Life Cycles, Facts, & Migration on Saturday, April 19. Then lunch at the Anchor Inn Restaurant. This will be a fun trip for the group. Sign in and details will be available at the next meeting.

Specks and Adams



Dorrance, Kansas

The owner of the old bank building in Dorrence is planning to stage a series of old time bank robberies on the Saturday before Memorial Day. He would like to have at least a dozen pre-1932 cars parked around the bank to provide a little atmosphere. Last year we had a couple of Model T's and a 1923 Buick. The cars added a lot to the event and we would like to expand it further.

We are still working out the details. I'll provide more information as it becomes available. Anyone interested in participating can contact me by phone, text or email.

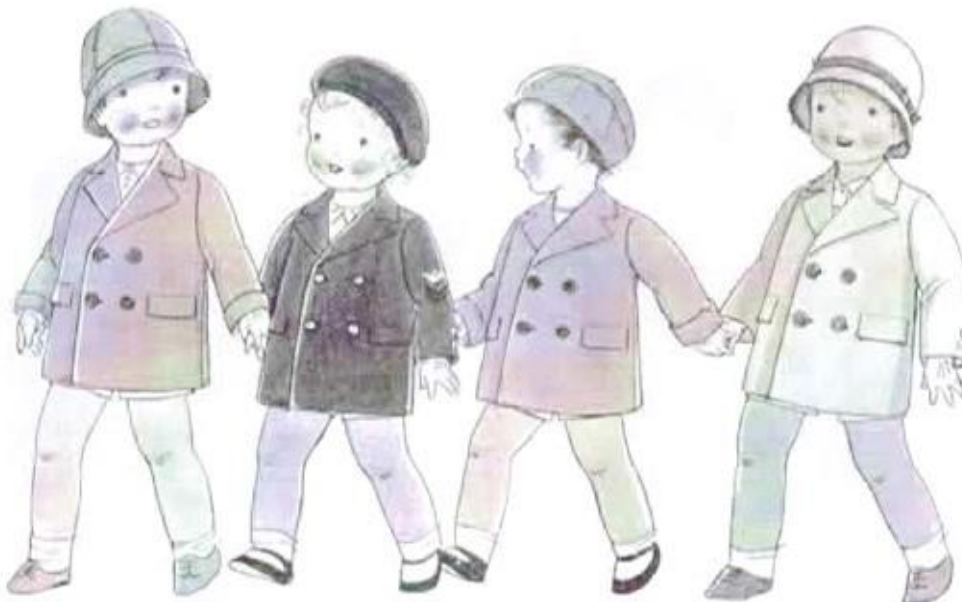
John Vsetecka

jvsetecka@cox.net

620-



ERA FASHIONS



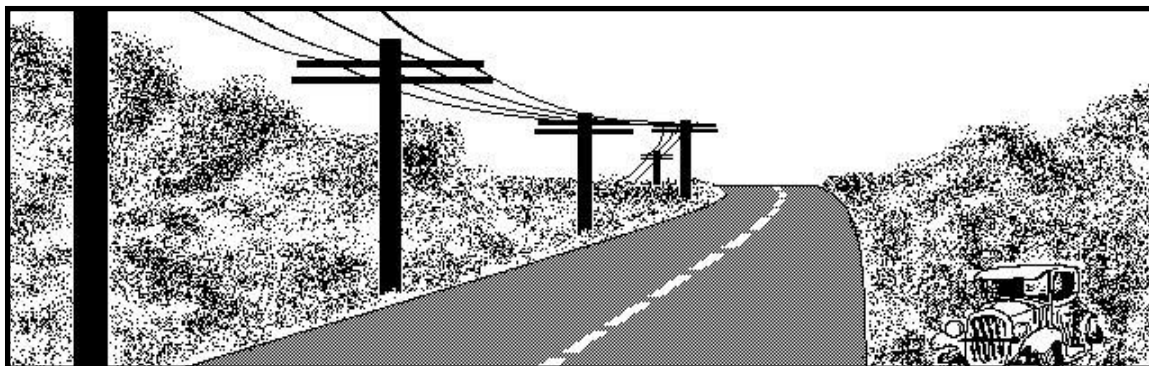
**D
A
Y
T
I
M
E

W
E
A
R**

Boys or girls coats with matching hats. The hats are different styles including the beret. The hats are made of straw or matching fabrics.

TOUR SCHEDULE 2025

March 8..... Saturday	I hear your “A” talkingGrabendike
March 16.....Sunday	Oh go fly “A” kite.....Chenoweth
April 19.....Saturday	How far can “A” Monarch flySpeck/Adams
May 2-4 Friday –Sunday	“A” Big Kansas Road Trip.....James
May 10.....Saturday	Lunch at “A” hotel in Beaumont.....Grabendike
June 8.....Sunday	Kids on “A” train.....Grabendike
June 8.....Sunday	All Wheels Day/Lake Afton.....	
June 14.....Saturday	Belle Plaine for “A” lot of music.....Hezlep
June 14.....Saturday	Automobilia Moonlight Car Show.....	
July 4.....Friday	“A” Derby Parade.....Hileman
August 14-15-16 Friday—Sunday.....	“A” Drive to Pioneer Village.....Chenoweth
September 15-24..... Monday –Wednesday....	“A” Ford Day at the Gilmore.....Kibbe
October 5.....Sunday	All Ford Day.....	
November 22...Saturday	“A” good look at an out- house in Elk Falls.....James
December.....TBA	“A” ladies luncheon	
December.....TBA	“A” Christmas PartyMcNeal



MAFFI MINUTE

January 2025 MAFFI Minute

January 2, 2025 was a busy day of “moving” at the Model A Ford Museum in Hickory Corners. MAFFI Trustees Jerry Dennany and Randy Czubko worked with a crew from the Grape A’s Model A Club in Kalamazoo, MI. Executive Director, John Marshall brought a crew up from Illinois with him to help move everything at the museum too. Vehicles, vignettes, and all memorabilia had to be carefully moved and covered (construction dust) because the back wall of the museum was opened up to connect the expansion to the current museum. Many thanks to these folks for all the volunteer effort on behalf of all of us Model A hobbyists.

The Model A museum is closed for the rest of the month of January while work is going on. In fact, the whole Gilmore Auto Museum is closed for the month of January because new floors are being installed in several buildings.

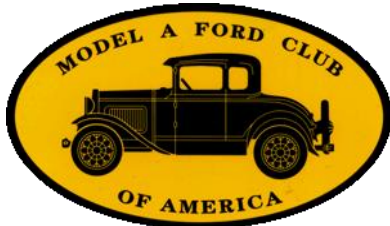
The photos show the Model A exterior and the interior with vehicles all covered in plastic. The expansion is moving along as expected. In the meantime, ZOOM meetings are being held for planning the 2025 Model A Days in September and “the christening”!

Stay tuned,

Cindy Ellenbecker, MAFFI Trustee/Secretary



National Model A Clubs



MAFCA

250 S. Cypress St.
La Habra, CA 90631-5515
www.mafca.com
U.S. Membership Cost: \$50

The Wichita A's Model A
Ford Club encourages
members to join both
National MARC and
MAFCA Clubs.

For membership information you can
check MAFCA and MARC web sites.



MARC

6721 Merriman
Garden City, MI 48315
<http://modelarestorers.org>
U.S. Membership Cost: \$50

TECH ARTICLE

TWO HELPFUL TOOLS

By Tom Endy

Found in the June issue of "The Quail Tale."

A Model A runs better when the battery polarity to the coil is correct. Back in the old days, the polarity was detected with a lead pencil. It was great sport for high school auto shop teachers to demonstrate to the class how it was done, then hand the pencil to the class clown and have him try it.

Today there is a device available that will tell the polarity a lot easier and with little chance of an electric shock. It plugs into the top of the distributor, start the engine and one of two LEDs will be lit indicating correct or incorrect polarity.

If the polarity is incorrect it is a simple matter of swapping the two coil primary wires around. Bratton's sells the device, part number 17140, \$27.95.

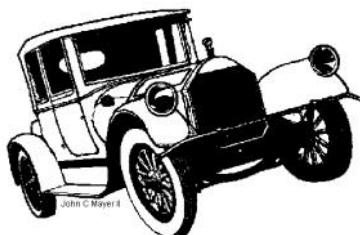
I purchased one a number of years ago and at a club function we checked about 20 Model A's and found about half had the polarity reversed and the owners were not even aware of it.

The other handy device indicates the health of the ignition system. What is desired is a strong healthy spark. This device plugs into the top of the distributor the same as the other device.

Start the engine and move the slider inside the device down and observe the spark leaping across the gap. You should be able to move the slider all the way down to the bottom with the engine continuing to run and with a long spark.

Bratton's sells the device, part number 17150, \$19.95. If you think you are not getting spark to the top of the distributor, an easy test is to move the slider down about 1/16 of an inch and hit the starter with the ignition turned on and if you are getting spark you will be able to see it jumping the gap.

A wooden stick is supplied with the device to move the slider. Don't try to do it with anything metal. These are both good tools to have in your traveling tool bag under the seat. A trouble light and a by-pass cable are also good things to have along.



Contributed by **Jim Broadhead**



OFFICIAL CONVERSION CHART

HOW TO INTERPRET

ANTIQUE CAR ADS

IF IT SAYS:

IT REALLY MEANS:

Rare model.....	Nobody liked them when new either
Older restoration.....	Can't tell it's been restored
Needs engine work.....	It's been frozen for 30 years
Uses no oil.....	Just throws it out
No rust.....	Body and fenders missing
Rough.....	It's too bad to lie about
One owner.....	Never been able to sell
No time to complete.....	Can't find parts anywhere
Needs interior.....	Seats are gone
Rebuilt engine.....	Has new spark plugs
May run.....	But it never has
Low mileage.....	Third time around
Many new parts.....	Keeps breaking down
29 coats hand-rubbed paint....	Needed that much to cover rust
Clean.....	It sat out in the rain yesterday
Best offer.....	About what I expect to get
Always driven slowly.....	Won't go any faster
Prize winner.....	Hard luck trophy 3 times in a row
Stored 25 years.....	Under a tree
Real show stopper.....	Orange with purple fenders
Easy restoration.....	Parts will come off in your hand
Ready to show.....	Just washed it
Top good.....	Only leaks when it rains
Good investment.....	Can't depreciate any more

LOCAL AND NATIONAL CALENDARS

2025 SWAP MEET & CAR SHOW SCHEDULE

March 7-8.....	Kansas Sunflower Swap Meet for Charity at Century II Convention Center.....Wichita, KS
April 24-26, 2025.....	Pate Swap Meet, Texas Motor Speedway www.pateswapmeet.comFort Worth, TX
June 11-14, 2025.....	Petit Jean Swap Meet.....Petit Jean, AR
October 7-10, 2025.....	Hershey Region AACA Swap MeetHershey, PA



2025 FUTURE REGIONAL & NATIONAL MODEL A MEETS

April 11-13, 2025.....	2025 MARC Membership Meet.....Nashville, IN
June 15-20, 2025.....	2025 MARC National Meet.....Gettysburg, PA
June 16-20, 2025.....	2025 National Tour hosted by Dallas Model A Ford Club.....Waynesboro, VA
May 31-June 7, 2026.....	2026 National Convention hosted by Blue Mountain A's.....Pendleton, OR

ERIC WENINGER
OWNER

2045 S BEDFORD ST
WICHITA, KS 67207

316-619-1821

www.modelmedic.com
modelamedic@gmail.com

**THE
MODEL A
MEDIC^{LLC}**



STOCKING A FULL LINE OF
NEW AND USED MODEL A FORD PARTS

SPECIALIZING IN FULL SERVICE REPAIRS,
ENGINE, DRIVE TRAIN, AND RESTORATION

OVER 40 YEARS WORKING EXPERIENCE

B&B Electric Motor Co.
Your One Stop Industrial Service Center

New • Repair • Rewind

Electric Motors • Pumps

Phone (316) 267-1238 • 1-800 499-1238
Fax (316) 267-0599 • Emergency (316) 641-0806
email: bbemc@msn.com • bbelectricmotor.com

332 Lulu
Wichita, KS 67211

Ed Giesen
Customer Service

Join the Wichita A's.
We meet on the 4th Monday of each
month except December

Minisa Park, 704 W. 13th Wichita,
KS at 7 PM

Mishelle Whitney

mishelle@loraccompany.com

624 E. Harry Street

Wichita, KS 67211

316-263-2565 * 1-800-554-0144

Fax 316-263-5181

www.loraccompany.com

Lorac Company, Inc.

Basement Window Well Cover * Powder Coating
* Custom Metal Fab * Media Blasting



RAY HARSHFIELD
Realtor

ADDRESS
1356 N Emporia St
Wichita, KS 67214

CELL: 316-305-1705
OFFICE: 316-260-2674
FAX: 316-260-9902
ray.harshfield@cosh.us

Go To:

Wichita A's Model A Ford Club
 [\(wichitaas.com\)](http://(wichitaas.com))

To download forms to join the Wichita
A's Model A Ford Club, MAFCA,
MARC or MAFFI .



**Top Notch
Heating & Cooling**

Jesse James
Service/Install Manager
(316) 253-0819

24 Hour Emergency Service

Wichita A's Model A Ford Club
P.O. Box 25
Wichita, KS 67201



Address Service Requested

Wichita A's Model A Ford Club Contacts

If you chose to email one of the following contacts, go to our web page at www.wichitaas.com and click on contacts and send your email from there Include the person you want to email in your message

- President, Frank Chenoweth
..... (316)
- Vice President, Rick Speck
..... (913)
- Secretary, Kathy James
..... (316)
- Treasurer, Claudia Ellerman
..... (316)
- Tour Chairman, Don Grabendike
.....(316)
- Membership, Linda Kibbe
..... (316)
- Newsletter Editor, Sheila Orr
sheorr@sbcglobal.net..... (316) 207-8878
- Webmaster, Darren Schuster

The Rumbleseat Review is the official publication of the Wichita A's Model A Ford Club, Inc., a local chapter of the Model A Ford Club of America and the Model A Restorers Club. It's purpose is to keep members informed of past, present and future events, activities, and club news. In addition, this newsletter includes articles and other information to aid in the restoration and enjoyment of the Model A Ford automobile.

This publication is mailed or emailed to members, prospective members and editors of similar publications prior to monthly meetings. Meetings are usually the fourth Monday of the month. Members may publish antique car related ads only for free of charge which includes items wanted, items for sale, or items for trade. We invite members to submit articles containing technical Model A information and other interesting tidbits for publication in this newsletter. Items to be published must be submitted to the newsletter editor by deadline shown in the calendar. Wichita A's membership dues are \$25.00, per year (October to September30). MAFCA dues are \$50.00 per year and MARC dues are \$50.00 per year. A business card advertisement in this newsletter is \$25.00 per year.