



# Rumbleseat Review



[www.wichitaas.com](http://www.wichitaas.com)

**WICHITA A'S MODEL A FORD CLUB**

Volume 36 Issue 8

P.O. Box 25, Wichita, KS

August 2021


## August 2021

## September 2021

## October 2021

S	M	T	W	TH	F	S
1	2	3	4	5	6	7
8	9	10	11	12	13	14
15	16	17	18	19	20	21
22	23	24	25	26	27	28
29	30	31				

S	M	T	W	TH	F	S
			1	2	3	4
5	6	7	8	9	10	11
12	13	14	15	16	17	18
19	20	21	22	23	24	25
26	27	28	29	30		

S	M	T	W	TH	F	S
					1	2
3	4	5	6	7	8	9
10	11	12	13	14	15	16
17	18	19	20	21	22	23
24	25	26	27	28	29	30
						

### Refreshments

**Beverage:**  
Nancy Brown  
**Cookies:**  
Debbie Rice  
JoAnn Bruce  
Linda Kibbe

## CLUB TOURS & MEETING SCHEDULE

### August 2021



21..... Garage Tour and Burton Barn.....Gilbert Adams  
23..... Club Meeting at Minisa Park 704 W. 13th.....7:00 PM  
Program: John Stone.....

### September 2021



4..... Kloudbusters.....James  
10..... Newsletter Deadline...editor @wichitaas.com.....Sheila Orr  
11..... International Model A Ford Day.....Grabendike  
26..... Ice Cream Social at Ludlow's.....6:00PM  
27..... Club Meeting at Minisa Park 704 W. 13th.....Ludlows

### October 2021



8..... Newsletter Deadline...editor@wichitaas.com.....Sheila Orr  
25..... Club Meeting at Minisa Park 704 W. 13th.....7:00PM

### WHAT'S INSIDE

Calendar	1
Meeting Minutes	2
Announcements	3 - 4
Membership Renewal	5
Future Tours & Events	6 - 7
Past Tours	8-10
National & Regional	11
Tech Talk	12
ERA Fashion	13
Swap Meet/ Nat'l Schedule	14

The Wichita A's meet on the 4th Monday of the month except December. We do not hold a meeting during the month of December. Other meeting changes will be published in the newsletter prior to the scheduled meeting. The meetings are held at Minisa Park, 704 W. 13th, Wichita, KS. Meeting time is 7:00 PM unless otherwise noted in the newsletter.

## Wichita A's Model A Club Meeting July 26 , 2021

The July meeting of the Wichita A's was called to order by President **Alan Orr**. We opened the meeting by reciting the Pledge of Allegiance. **Stewart McNeal** was introduced as a new member of the club. A motion was made by **Gary Hileman** to approve the minutes of the last months meeting as printed in the newsletter. Motion seconded and carried.

**Alan** read a letter from **John LaVoy** who is running for Board of Directors of MAFCA. **Claudia Ellerman** gave the treasurers report. **Bonita Graham**, Sunshine Lady, reported that **Dennis Ellerman's** mother had passed away. Also, **Larry Goodnight**, a member from back in the 70's had passed away. He was the one who designed the logo for our "Kiss My A" shirts.

**Gary Hileman** reported that we had a good representation at the Derby 4th of July parade. There were 19 Model A cars in the parade and we served 44 people at our lunch that followed the parade. Thanks **James** and **Judi Sharp** and **Gary** and **Donna Hileman** for organizing that event. Thanks to **Max Brown** who presented last month program on First Aid. It was very informative and interesting. **Mike James** reported that we had 16 Model A's and 32 people take part in the tour of the Frank Lloyd Wright Allen house and PBS Antique Roadshow tour. Wichita can be very proud that the house has been restored and we get to show it off to people from all over the world. It is truly a gem! Our cars were on display at the Antique Roadshow. They provided us a nice air conditioned place to visit and enjoy our box lunches while people in attendance looked at our cars. Thanks **Mike** and **Kathy James** for putting the tour together for our club to enjoy! It was a fun day.

August 14, **Ted Fitzmier** is hosting a BBQ Cookoff/Car Show if anyone is interested. August 21, **Gilbert Adams** has put together a tour of an old service station and Burrton Barn Tour. Leave McDonalds at 53rd and Meridian at 9AM. No need to sign up, just show up. We'll eat lunch together at The Barn in Burrton. Everyone pays for their own lunch. Sept. 4th there will be a Cloud Busters Rocket Show in Argonia. No cost for this tour. **Mike** and **Kathy James** will have details at August club meeting. Our Christmas party will be on Dec. 10th. We will be attending the Prairie Pines Mystery Dinner Theater. There will be a chance to sign up at the August meeting or contact **Dawna Ruggles** for more details.

September 27th will be our Annual Meeting. We will be electing our new Board of Directors for the next year. The following positions consist of President-**James Sharp**, Vice President-**Bob Phye**, Secretary-**Kathy James** and Treasurer-**Claudia Ellerman**. We have 2 members at large positions to fill. **Gil Adams** has volunteered for one but we still need someone to fill the other. The highest vote getter will serve a 2 year term and the other will be a 1 year term. Please notify any current officer if you would like to volunteer. If any member would like to be considered for any of the other offices, please notify **Alan** so your name can be included on the ballot.

Tonight's program—Story Time with Old Don. Next meeting August 23rd at Minisa Park. Refreshments tonight provided by **Susan Stone**, **Gil & Melanie Adams** and **Rita Hoffmans**. Meeting adjourned by **Alan Orr**, President

Respectfully submitted,  
**Judi Sharp**, Secretary

## PRESIDENTS MESSAGE

It has been a very busy time around the Orr house this month. I have gotten all of dad's machines and old cars sold. Moved Wayne to Presbyterian Manor in Assisted Living. He is doing very well with the changes. Next we will be getting ready for his Estate Sale Sept 16th –18th. It has been a Family affair getting Dad ready for the move! Hope to spend some time driving the A and going to the lake before the winter season hits! We do have a full slate of volunteers for next years Officers! We will be voting on the officers at the September meeting. I want to thank all of the volunteers that continue to step forward. Without all of the volunteers we have throughout the organization, I don't know where are club would be! Thank you.

**Alan Orr**  
President

# ANNOUNCEMENTS



## September Birthday

- 4 Pat McHenry
- 5 Bill Shearer
- 10 Larry Cushenbery
- 13 Deanne Moran
- 15 Bob Phye
- 17 Marvin Hamlin
- 18 Michael Halfman
- 21 Eric Schoenecker
- 24 Sondra Kester
- 27 Jim Clark
- 27 Jeannie Cole
- 27 Larry Sigg
- 28 Joyce Guinty
- 28 Terry Grabendike
- 29 Steve Grabendike
- 29 Tom Waite
- 30 Maria Hildibrand
- 30 Karen Price

## NEW MEMBERS

### Stuart & Gina McNeal

'31 s/w Fordor (previous owners: Gilbert Adams/ Ed Hakenhotz)

## NEW ADDRESS

### Wayne Orr

Wichita Presbyterian Manor  
ou can visit but visitors are limited and must have an appointment –please contact **Alan** or **Sheila** for info.

## MAFFI

At the last meeting the donations for MAFFI Museum were \$8.00. From the previous balance when headlight was displayed the total was \$116.51- New balance is \$124.51

**Dennis Ellerman**



## SYMPATHY

Our sympathy to new member **Rick Speck** at he the passing of his wife, Cheryl. They have just moved here from KC and he joined at the June meeting. He was good friends with **Milt Hessefort** in KC.

Our prayers & sympathy to **Dennis & Claudia Ellerman** at the death of his mother, **Alma Ellerman**.

## Refreshments



## Newsletter Deadline

Friday, September 10, 2021  
**Sheila Orr**  
editor@wichitaas.com or  
316-

### AUGUST

**Beverage**  
Nancy Brown

**Treats**  
JoAnne Bruce  
Debbie Rice  
Linda Kibbe

### SEPTEMBER

**Beverage**  
Barb Phye

**Treats**  
Frank Chenoweth  
Dawna Ruggles  
Doris Jean Ludlow

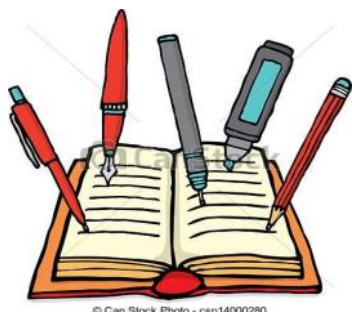
### OCTOBER

**Beverage**  
Gilbert Adams

**Treats**  
Glenda Sill  
Arley Bennett  
Bonita Graham

## CLUB INFORMATION CONTINUED

### EDITOR CORNER



It is August already!! Hope everyone is enjoying the “warm” weather! Looking forward to the upcoming tours in the club. Looks like we have a full slate of officers for next year to vote on-thanks to all who step up to volunteer their time. If there is anyone in the club who would consider taking over the newsletter, please give me a call. It has been fun to learn (most of the time) and challenges my mind to tackle new information. Just give it a thought!!

Also just a note as to how many people in this club are people you can count on-Thanks to **Jim Broadhead** and **Richard Kibbe** for coming to our rescue when we had trouble with our Model A!

Sheila Orr  
Editor

A note from **Lonnie Bennett-Lonnie** is having shoulder joint replacement surgery on the 17th of August. Said he believes it is called arthroplasty! Thoughts and prayers



### WICHITA A'S WEB SITE

Our web site has a new look! It still has the same address and information. [www.wichitaas.com](http://www.wichitaas.com) **Darren Schuster**, our web master, has also added his daughter, **Riley Schuster**, as web master.

If you have any questions or comments, please contact me.  
**Linda Kibbe**

### CLUB DUES ARE DUE OCT 1

**Wichita A's Club dues are still just \$25.00 per family! They are due October 1 ( and late December 15). Use the short form for RENEWALS & the longer form for new members OR IF there are changes to your information. Both forms are in this newsletter. You may pay at the meeting or mail your dues to Wichita A's, PO Box 25, Wichita , KS 67201**

Thanks,  
**Susan Stone**





**WICHITA A'S - 2022**Use this form for **RENEWAL** -- IF NO Changes to **INFO**

Date Paid \_\_\_\_\_

NAME \_\_\_\_\_

\_\_\_\_\_ **RENEWAL** (Dues are \$25) \_\_\_\_\_ **AD** (Business Card \$25)**CIRCLE** how you want your newsletter? (E-mail, Mailed, or Both)**IF changes** to Address, Phone or E-mail please use longer form.**MAKE CHECKS PAYABLE TO: WICHITA A's**Use this form If You have Changes to **INFO** OR **FOR A NEW MEMBER****WICHITA A'S MODEL A FORD CLUB - 2022**

(Oct.1 thru Sept. 30)

**ALL CLUB DUES** (Oct.1 thru Sept. 30) are **\$25.** \_\_\_\_\_ **NEW** or \_\_\_\_\_ **RENEWAL****PLEASE CHECK HOW YOU WOULD LIKE TO RECEIVE YOUR NEWSLETTER:**\_\_\_\_\_ **ONLY E-MAILED**\_\_\_\_\_ **ONLY MAILED HARD COPY**\_\_\_\_\_ **BOTH E-MAILED & MAILED HARD COPY****Commercial Newsletter Ad (Enclose Business Card IF New or Updated)** \_\_\_\_\_ **\$25/ Year**

NAME \_\_\_\_\_ BIRTHDAY (MO/ DAY) \_\_\_\_\_

SPOUSE'S NAME \_\_\_\_\_ BIRTHDAY (MO/ DAY) \_\_\_\_\_

ADDRESS \_\_\_\_\_

CITY \_\_\_\_\_ STATE \_\_\_\_\_ ZIP \_\_\_\_\_

HOME PHONE (IF want printed in roster) \_\_\_\_\_

MEMBER CELL (IF want printed in roster) \_\_\_\_\_

SPOUSE CELL (IF want printed in roster) \_\_\_\_\_

E-MAIL ADDRESS \_\_\_\_\_ Include me on the Club e-mail list? **YES** or **NO**

Model A Year &amp; Body Style: \_\_\_\_\_

**MAKE CHECKS PAYABLE TO: WICHITA A's****BRING TO THE CLUB MEETING OR MAIL TO:** WICHITA A'S  
P.O. BOX 25  
WICHITA KS 67201

## FUTURE TOURS & EVENTS

### August Station Tour

**August Station Tour date change to August 21st!**

We will meet at the McDonald's at 53rd and Meridian by 9AM and plan to leave around 9:15 AM to tour the station where Mr. Thrasher will tell the history of the 12 x 12 station and Hwy 50. After the history we will tour on west to Burton, KS to have lunch at the Barn Grill on your own.

Tour leader: **Gilbert Adams**  
PH:



Virgin Galactic, Blue Origin, Space Station, NASA's Perseverance Rover – these are all names in our recent news talking about space vehicles soaring all around us. Well, we here in Kansas do not have to be left behind. Join us for a fun day as we blast off in our Model A's to Argonia, Kansas and the rocket launch site for Kloudbusters, a High Power Rocket club based in South Central Kansas. Our trip is planned for Saturday, September 4, 2021. The weekend happens to be the same weekend for AIRFest27 at which rocketeers from across the United States come to Kansas to participate in launching rockets.

**Tour Organizers:** Kathy James – Cel. 316-734-2884  
Mike James – Cel. 316-253-1414

Email : [kmkjames@gmail.com](mailto:kmkjames@gmail.com)

**Sign Up :** No charge to attend this event. If you want to be included on a manifest for the tour and travel as a group to the launch site, please sign up.

**When:** Saturday September 4, 2021

**Where:** We will meet at McDonalds Restaurant, 2437 S. West St., Wichita, KS.

**TIME:** Departure from McDonalds at 8:15 AM (approximate 1 hour drive to Launch site)

**What to bring:** KLOUDBusters provide a public address system, 20x40 spectator tent, vendors, portajohns, and FM broadcasts of the Launch Control Officer's audio. Kloudbusters recommend bringing sunscreen, awning, beverages and chairs. In addition, we recommend hat, bug spray

**NOTE:** this is an outdoor event. Various food trucks will be at the site or you can bring your own picnic basket (lunch is on your own).

More Information available at: [www.kloudbusters.org](http://www.kloudbusters.org)

## FUTURE TOURS & EVENTS

### INTERNATIONAL MODEL A FORD DAY

**Saturday, September 11**

This years tour will take us to Towanda and to a special sight just outside the town. We will have about six miles of dirt roads but will drive slow. There will be **NO-sign –up sheet. JUST SHOW UP.** We will depart from the convenience store at the corner of 21st and Andover Rd. at 9AM. Be sure to bring your **INTERNATIONAL MODEL A FORD CARD.** Members that went on the 2019 tour will receive a punch for 2020.

**Don Grabendike-Tour Leader**



## Ice Cream Social



**Doris Jean and Darryl Ludlow** are planning on having a Ice Cream Social on September 26th at 6 PM. The event will take place at their home located at 345 S. Milstead!

**Doris Jean** will have a sign up sheet at the August Meeting!  
Come join in on the fun!

## Christmas Party

Come join us for a great Christmas Holiday Murder Mystery show called “Peril at the North Pole...Yule Die Laughing” at the Prairie Pines Play House located at 4055 N. Tyler Road in Maize, KS. 50 seats have been reserved for us on Friday evening at 7PM on December 10 (check in time 6:15-6:45). The cost will be \$25.00 for members and \$40.00 for non-members. A three course progressive dinner with coffee, tea or softs drinks will be served by the play cast themselves. The only thing your ticket does not include are specialty drinks. Their Old Barn Christmas Shop will be open from 6:00—6:45 in case you want to purchase a Christmas gift or sip on a complimentary cider by the warm fire.

Sign up will be at our August club meeting. Your payment of \$25.00 holds your place. If you can't make the meetings but wish to be counted for the festivities, please make out your check to Tom Ruggles and mail it to Wichita, KS Deadline to sign up for this show is September 1st. Don't procrastinate or you miss out on this hilarious mystery theatre production. Only 30 spots left!

**Dawna Ruggles**





## Wright House/PBS Antiques Fair-Indoor Picnic

Saturday, July 24 saw a parade of 16 Model A Fords converge on the Frank Lloyd Wright's Allen House located in Wichita's College Hill. The house was designed by American Architect Frank Lloyd Wright for Kansas Governor, Senator and newspaper publisher (Wichita Beacon newspaper) Henry Allen and wife, Elsie. The house is an interesting design - prairie house on the outside with horizontal lines, earthy gold wheat tones of Kansas and on the inside - light fixtures, furnishings and living space reflecting a hybrid of Japanese and Western architecture. The house is on the National Register of Historic Places.



Frank Lloyd Wright



Henry Allen



The home is different! Beginning with the “front door” that would normally face to the street on the east side of the house, actually faces south and is somewhat hidden from view. The docent advised our group that Wright designed the front entrance to “discourage peddlers.” If one did find the door, admittance would have been only to a “reception” area that housed bench seating, fireplace and ½ bathroom (all unique for this period of time). The living room had multiple doors leading out to a patio with reflecting pool surrounded by gardens (inspired by Wright who had recently completed design work on the Imperial Hotel in Tokyo, Japan). The house has over 30 pieces of Wright designed furniture so one is better able to appreciate the original look of the home.



Continued from page 8



Wichita A's Parked on former  
S. Lawn



Wright/Allen House reception  
area



West side of house patio, reflecting  
pool

Commissioned in 1916 and completed in 1918, the house would have had many Model T's and Model A's parked around the residence. The occasion of our club attendance on an early Saturday morning offered the College Hill neighborhood an opportunity to visualize a scene from the 1930 time period and many nearby residents came by the Wright house to see and take photographs of our Model A's parked outside. Indeed, I was reminded by the excitement of the docents leading the house tour, how inspiring the Model A cars can be. The neighborhood residents as well as the docents seemed to be enamored with the cars. In fact the docents put a short video trailer of the cars parked and leaving the residence on their facebook site. (google: frank Lloyd Wright's Allen house on facebook and scroll down to picture of Model A's)



Model A's lined up at entry to PBS  
Antique Fair

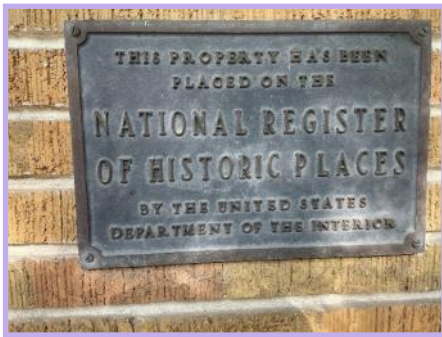


**Don & Donna Waller** Providing  
attendees with a briefing of their  
Model A.

We concluded our tour day with a five mile drive to the Wichita State University Hughes Metroplex and the site for the Kansas Public Broadcasting Service, Antique Style Roadshow fundraiser. KPTS had asked our group to attend the event and park the Model A cars near the entry area to provide some "bling" for KPTS patrons seeking appraisals of personal vintage items. Our group lined the entry way with our cars and then quickly sought out the shelter of the building and airconditioned air as the outside temperatures approached 95 degrees – can you say HOT! We enjoyed a catered indoor picnic lunch from Tanya's soup kitchen and Model A fellowship as we reflected on our opportunity to tour a home town gem – The Frank Lloyd Wright/Allen H We concluded our tour day with a five mile drive to the Wichita State University Hughes Metroplex and the site for the Kansas Public Broadcasting Service, Antique Style Roadshow fundraiser. KPTS had asked our group to attend the event and park the Model A cars near the entry area to provide some "bling" for KPTS patrons seeking appraisals of personal vintage items. Our group lined the entry way with our cars and then quickly sought out the shelter of the building and airconditioned air as the outside temperatures approached 95 degrees – can you say HOT! We enjoyed a catered indoor picnic lunch from Tanya's soup kitchen and Model A fellowship as we reflected on our opportunity to tour a home town gem – The Frank Lloyd Wright/Allen House—while recognizing that an old Model A car made the day possible.

Contributed by **Mike James**

## Extra Pictures from Frank Lloyd Wright and PBS Antique Tour





## MAFFI Newsletter Minute July 2021

### Model A Day 2021 is fast approaching-September 18th!

Every year in conjunction with Model A Day, MAFFI has a Swap Meet on Saturday and MAFFI has a booth with all the proceeds going to the foundation. If you are driving to the event this year, and your club would like to donate a Model A Part for our booth, please contact Greg Fish ([fish\\_49202@yahoo.com](mailto:fish_49202@yahoo.com)) and let him know. This year's Swap Meet is looking to be one of our biggest and best yet!

The old saying goes, "Many hands make light work" and nothing could be truer than at Model A Day. We could use a few volunteers to help at several areas throughout the day on Friday and Saturday. It could be something as simple as selling tickets for a seminar, working a shift at the front gate, helping park cars and so many more.

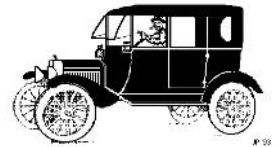
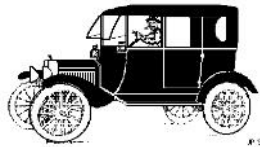
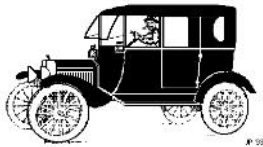
Any questions regarding the Swap Meet or for volunteers, contact:  
Mark Maron ([markmaron@gmail.com](mailto:markmaron@gmail.com))

Stay tuned for next month when we will be able to announce the many seminars that will be available for you to attend.

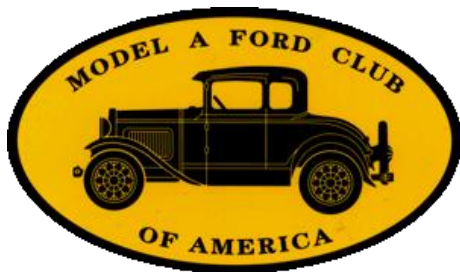
The Trustees are looking forward to meeting each and every one of you this year and are proud to showcase our beautiful museum with our First Responders Display.

Thank you,

**Marsha Quesnel**, MAFFI Trustee  
[clubcontact@maffi.org](mailto:clubcontact@maffi.org)



## National Model A Clubs



The Wichita A's Model A Ford Club encourages members to join both National MARC and MAFCA Clubs.



### MAFCA

250 S. Cypress St.  
La Habra, CA 90631-5515  
[www.mafca.com](http://www.mafca.com)  
U.S. Membership Cost: \$50

For membership information you can check MAFCA and MARC web sites.

### MARC

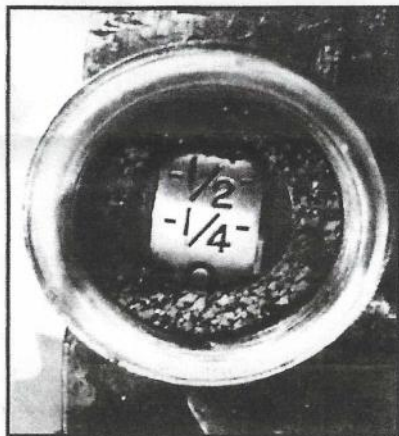
6721 Merriman  
Garden City, MI 48315  
<http://modelarestorers.org>  
U.S. Membership Cost: \$45

# Tech Talk

## Gas Gauge Repair

### Gas Gauge Repair

Once the gauge is out of the tank and the glass and gaskets removed, clean all the parts. If repainting the numbers is necessary do that with Testors model paint that is gasoline resistant. This is available through hobby and model shops.



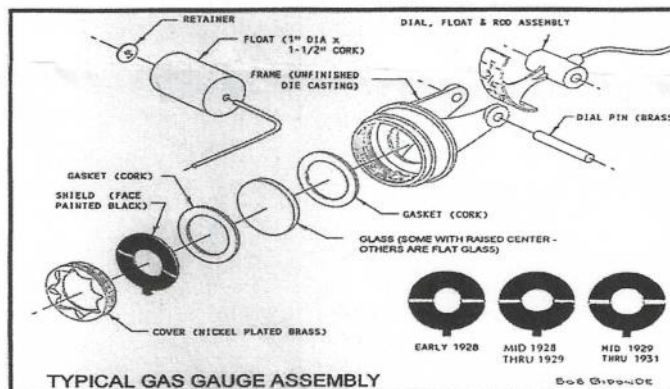
The gasket set comes with a large cork or neoprene gasket and two small cork or neoprene gaskets as well as the one or two brass washers.

The large cork gasket goes into the gas tank hole first, the gauge follows and rests against this gasket, the brass washers is on the out side and allows the flange nut to be tightened with out moving the gauge.

We recommend at least two brass washers and as many as three, that is why we recommended saving the ones that were on the gauge when it was removed.

Place one of the small washers against the gauge housing, then the glass next a gasket and then the metal face plate.

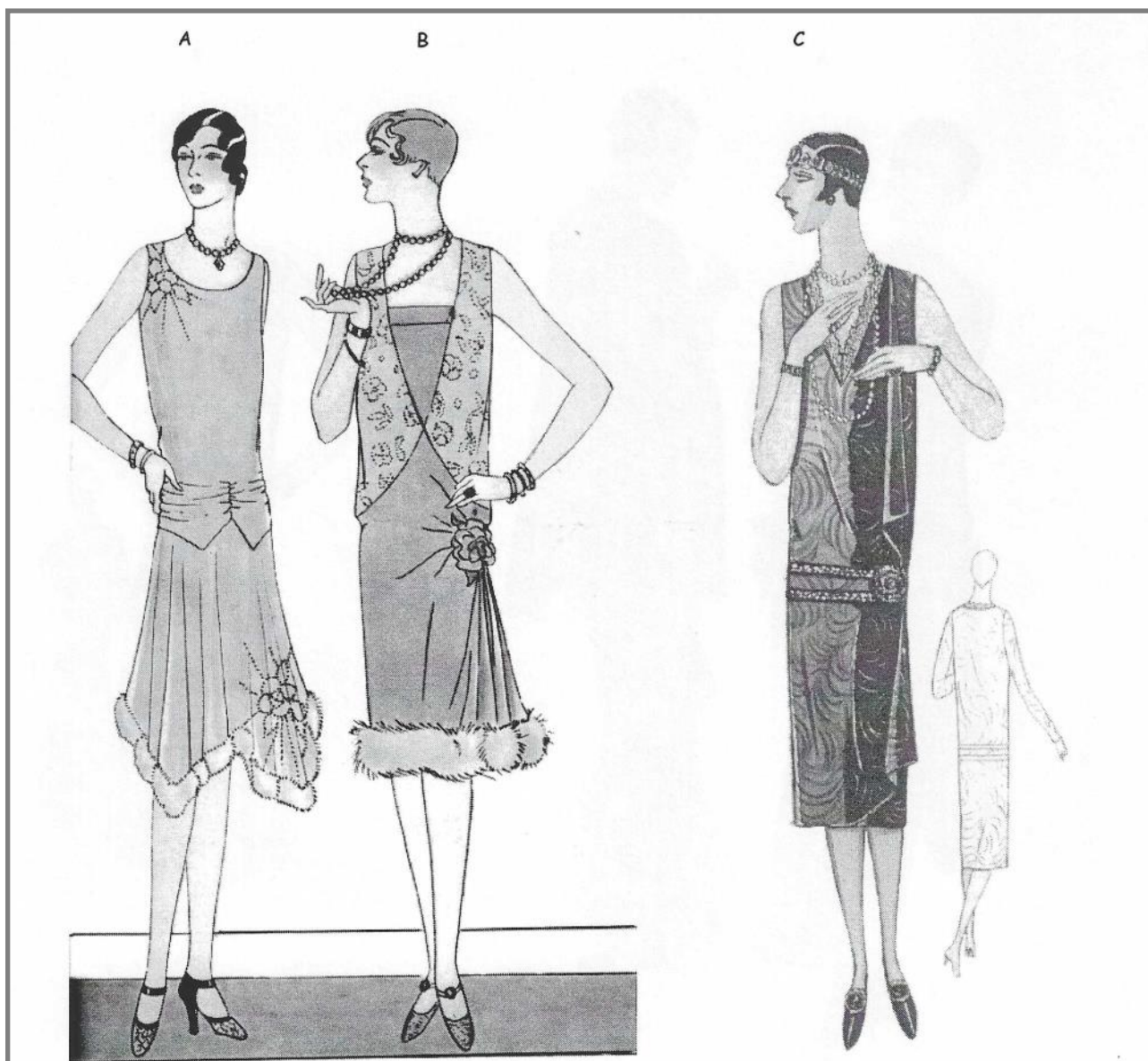
With all the parts cleaned and the new float installed on the end of the gauge wire ready to proceed with replacement into the car. When you purchase the gasket kits from the parts suppliers some come with only one large brass washer. At least two of these are needed and when we removed the gauge from the sedan, which was very original and complete, it had three of these washers.



Contributed by **Jim Broadhead**



## ERA FASHION-Evening Formal Wear



- A. This dress of crepe satin is fur trimmed and embroidered. The pointed hemline, and a slightly gathered hipline complete the skirt portion. c. 1928
- B. An embroidered wild rose sits on the side hipline creating a soft gather, and fur trims the even hemline. The vest-like bodice is adorned with glass beads. c. 1928
- C. A velvet brocade frock with simple lines. The dress can be worn with sleeves. The edging is lace, with a doubled belted hipline and a soft pleat from the shoulder. c. 1928

## LOCAL AND NATIONAL CALENDARS



### 2021 SWAP MEET & CAR SHOW SCHEDULE

August 20-22, 2021...	Ozarks Antique Auto Club Swap Meet, Ozark Empire Fairgrounds...	....Springfield, MO
October 3, 2021.....	All Fords Day-Sedgwick County Park.....	.....Wichita, KS
October 6-9, 2021....	Hershey Region AACA Swap Meet.....	.....Hershey, PA
October 22-23, 2021..	22nd Annual Swap Meet/Sedgwick Street Rodders.....	....Hutchinson, KS



### 2021 - 2023 FUTURE REGIONAL & NATIONAL MODEL A MEETS

September 18, 2021.....	Model A Day at the MAFFI Museum.....	.....Hickory Corners, MI
December 2-5, 2021.....	MAFCA National Awards Banquet.....	.....Fort Worth, TX
April 1-3, 2022.....	MARC National Membership Meet.....	.....Swan Lake, Plymouth, IN
June 5-11, 2022.....	MARC National Meet.....	.....Morgantown, PA
June 12-17, 2022.....	MAFCA National Convention—Alamo A's...	.....Kirkville, TX
August 17-19, 2022.....	MARC National Tour.....	.....Bark City, MI
December 5-8, 2022.....	MAFCA National Awards Banquet.....	.....Golden, CO
June 11-16, 2023.....	Midwest Regional Meet.....	.....Breckenridge, CO



### A-Z Model A Parts - Zanes

Ron and Sondra Kester, Owners

773 Central Street

Glade, Kansas 67639

Phone: 785-543-6729

Fax: 785-543-3013

e-mail: [ron@ronsrestoration.com](mailto:ron@ronsrestoration.com)

## B&B Electric Motor Co.

Your One Stop Industrial Service Center

**New • Repair • Rewind**

**Electric Motors • Pumps**

Phone (316) 267-1238 • 1-800 499-1238

Fax (316) 267-0599 • Emergency (316) 641-0806

email: [bbemc@msn.com](mailto:bbemc@msn.com) • [bbelectricmotor.com](http://bbelectricmotor.com)

332 Lulu

Wichita, KS 67211

**Ed Giesen**

Customer Service

**ERIC WENINGER**  
OWNER

2045 S BEDFORD ST  
WICHITA, KS 67207

**316-619-1821 CELL**  
**316-685-2553 SHOP**

[info@modelamedic.com](mailto:info@modelamedic.com)

[www.modelamedic.com](http://www.modelamedic.com)

[www.facebook.com/modelamedic](http://www.facebook.com/modelamedic)

**THE  
MODEL A  
MEDIC LLC**



NEW AND USED MODEL A FORD PARTS

SPECIALIZING IN FULL SERVICE REPAIRS  
AND RESTORATION



**RAY HARSHFIELD**

Realtor

CELL: 316-305-1705

OFFICE: 316-260-2674

FAX: 316-260-9902

[ray.harshfield@cosh.us](mailto:ray.harshfield@cosh.us)

ADDRESS

1356 N Emporia St

Wichita, KS 67214

## Clearwater Excavating

316-522-7853

Rotor-rooting and replacement of  
sewer lines.



**Top Notch  
Heating & Cooling**

**Jesse James**  
**Service/Install Manager**  
**(316) 253-0819**

**24 Hour Emergency Service**

## ELLERMAN SPEEDOMETERS

STEWART-WARNER FOR

FORD MODEL A

OVAL OR ROUND

RESTORATION



DENNIS ELLERMAN

316.722.2107 OR

316.765.1506

[ELLERMANSPEEDOMETERS@COX.NET](mailto:ELLERMANSPEEDOMETERS@COX.NET)

Wichita A's Model A Ford Club  
P.O. Box 25  
Wichita, KS 67201



Address Service Requested

## Wichita A's Model A Ford Club Contacts

**President**, Alan Orr

[president@wichitaas.com](mailto:president@wichitaas.com)..... (

**Vice President**, Linda Kibbe

[vicepresident@wichitaas.com](mailto:vicepresident@wichitaas.com).....(

**Secretary**, Judy Sharp

[secretary@wichitaas.com](mailto:secretary@wichitaas.com).....(

**Treasurer**, Claudia Ellerman

[treasurer@wichitaas.com](mailto:treasurer@wichitaas.com)..... (

**Tour Chairman**, Don Grabendike

.....(

**Membership**, Susan Stone

[membership@wichitaas.com](mailto:membership@wichitaas.com).....(

**Newsletter Editor**, Sheila Orr

[editor@wichitaas.com](mailto:editor@wichitaas.com).....(

**Webmaster**, Darren Schuster

[webmaster@wichitaas.com](mailto:webmaster@wichitaas.com)

The Rumbleseat Review is the official publication of the Wichita A's Model A Ford Club, Inc., a local chapter of the Model A Ford Club of America and the Model A Restorers Club. It's purpose is to keep members informed of past, present and future events, activities, and club news. In addition, this newsletter includes articles and other information to aid in the restoration and enjoyment of the Model A Ford automobile.

This publication is mailed or emailed to members, prospective members and editors of similar publications prior to monthly meetings. Meetings are usually the fourth Monday of the month. Members may publish antique car related ads only for free of charge which includes items wanted, items for sale, or items for trade. We invite members to submit articles containing technical Model A information and other interesting tidbits for publication in this newsletter. Items to be published must be submitted to the newsletter editor by deadline shown in the calendar. Wichita A's membership dues are \$25.00, per year (October to September 30). MAFCA dues are \$50.00 per year and MARC dues are \$45.00 per year. A business card advertisement in this newsletter is \$25.00 per year.