



Rumbleseat Review



www.wichitaas.com

WICHITA A'S MODEL A FORD CLUB

Volume 35 Issue 9

P.O. Box 25, Wichita, KS

September 2020

September 2020

S	M	T	W	TH	F	S
		1	2	3	4	5
6	7	8	9	10	11	12
13	14	15	16	17	18	19
20	21	22	23	24	25	26
27	28	29	30			

October 2020

S	M	T	W	TH	F	S
				1	2	3
4	5	6	7	8	9	10
11	12	13	14	15	16	17
18	19	20	21	22	23	24
25	26	27	28	29	30	

November 2020

S	M	T	W	TH	F	S
1	2	3	4	5	6	7
8	9	10	11	12	13	14
15	16	17	18	19	20	21
22	23	24	25		27	28
29	30					

**SORRY
NO
MEETING
SO NO
REFRESHMENTS**

CLUB TOURS & MEETING SCHEDULE

September 2020



- 11..... Newsletter Deadline...editor@wichitaas.com.....Sheila Orr
26..... Keeper of Plains Tour.....James
28..... Club Meeting at Minisa Park **CANCELED**7:00PM

October 2020



- 9..... Newsletter Deadline...editor@wichitaas.com.....Sheila Orr
26..... Club Meeting at Minisa Park 704 W. 13th7:00PM

November 2020



- 6..... Newsletter Deadline...editor@wichitaas.com.....Sheila Orr
23..... Club Meeting at Minisa Park 704 W. 13th.....7:00PM

WHAT'S INSIDE

Calendar	1
Meeting Minutes	2
Announcements	3
Future Tour	4
Article	5-6
National & Regional	6-7
Tech Talk	8
ERA Fashion	9
Swap Meet/ Nat'l Schedule	10

**ONCE AGAIN, MINISA PARK IS UNAVAILABLE FOR
USE DUE TO COVID-19- SO THERE WILL NOT BE A
SEPTEMBER MEETING**

The Wichita A's meet on the 4th Monday of the month except December. We do not hold a meeting during the month of December. Other meeting changes will be published in the newsletter prior to the scheduled meeting. The meetings are held at Minisa Park, 704 W. 13th, Wichita, KS. Meeting time is 7:00 PM unless otherwise noted in the newsletter.

PRESIDENTS MESSAGE

It's getting old just canceling another meeting, but the Wichita Park Board has not opened their facilities to allow us to meet. I am seeing more activities starting to take place around the city, so maybe we are getting closer to getting through this Pandemic.

Due to the meeting in September being canceled and this is the month that our By-laws state that we are to hold our annual meeting and election of officers. With that said, all of your current elected officers have voluntarily committed to staying on for another year. We have asked all members to vote by E-mail for accountability. We are very close to getting the majority of responses in to approve. If you haven't voted yet please contact Sheila at sheorr@sbcglobal.net to vote.

Please be safe and responsible, hope to see all in the near future.

Alan Orr
President

EDITOR'S CORNER



It has been a LONG year!! So ready to have some normalcy in life. It certainly has been a time to reflect on things we take for granted-our freedom to choose where we want to go and who we want to be with etc. But it also makes us want to protect the vulnerable people in our lives. There is a Model A event coming up on September 26th-hope you can join. It will be great to see our friends

Sheila Orr
Editor

PLEASE SEND PICTURES

I would like to thank those who sent me pictures of their activities during the Covid-19 this summer. I am working on the project to show during our first club meeting we have sometime in the future. If you haven't sent me any pictures and have some to send or have additional pictures you want to send to me, that would be great. You can email them to vicepresident@wichitaas.com or send them to my cell phone at 316-. If you would like to add a note about your picture explaining your task that would be very helpful to me.

PS: All activities are acceptable. After all, I haven't been working on a Model A, but I have been baking and camping. 😊 😊

Thank You,
Linda Kibbe

NO MEMBERSHIP DUES IN 2021

Your board has unanimously voted to not have membership dues collected from any current member of the Wichita A's. Since not much activity has happened since March, they felt it only fair to the members to not have to pay dues for 2021!

ANNOUNCEMENTS



October Birthdays

- 2 Dick Price
- 3 Kathryn Halfman
- 5 Jeremie Hildibrand
- 8 Paulina Brashear
- 9 Carol Allen
- 10 Jim Newhouse
- 15 Lance Brashear
- 16 Dennis Anderson
- 18 Richard Kibbe
- 19 Dale Hellar
- 19 Barb Phye
- 21 Melissa Giordano
- 22 Ron Cole
- 24 David Beaver
- 24 Steve McLaughlin
- 26 Linda Kibbe
- 27 Kim Giesen
- 28 Dean Gier
- 30 Wanda Steffens
- 31 Lawrence Kottas

THANK YOU

We want to thank you for your thoughts and prayers on the death of **Debbie's** husband. Your presence has been felt during this difficult time.
Debbie Rice and JoAnn Bruce

GARAGE SALE

Francis Grady is having a Garage Sale on October 1, 2 and 3! Lots of tools, furniture and miscellaneous treasures!

Wichita, Ks

WANTED

I am looking for unused hotrod, jalopy parts for an A. Particularly, looking for banjo rear end, flathead floor shift transmission, or if you have anything from someone else's project or old hotrod or car that did not get finished, will you let me know?

Ryan Bendell

Email :

CONGRATULATIONS

MAFCA Recognition

Wayne Orr 45 years
Bob and Helen Louis Beaver 35 years
Francis Grady 25 years

ROSTER UPDATES

Grace Brooks

Jim Clark
New cell number

NEW MEMBERS

Lance & Paulina Brashear

1929 Business Coupe

FOR SALE

Newsletter Deadline

Friday, October 9, 2020
Sheila Orr
editor@wichitaas.com or
316-

1931 Cabriolet 68B partially restored. Also extra 1930-31 parts. \$12,500.
Contact **Ronald Little** at Parsons, KS.
Can leave message.

1928 Tudor Model A —Maroon and black with an asking price of \$20k or best offer
Francette Lenz
Home: 316-

KEEPER OF THE PLAINS TOUR



Keeper of the Plains Tour

Date: Saturday, September 26, 2020

Time: 9:00 AM to 1:00 PM (approximate total time – 4 hours)

Meeting spot: McDonalds Restaurant, 2616 West 53rd St. North
(corner of 53rd & Meridian)

Cost: \$5.00 per club member - \$10.00 for guest (which will include a sack lunch)
Payment can be made prior to 9:00 AM departure time

What to bring: beverage to drink and lawn chair for the park

Tour Description: 2020 is the 150th Birthday of Wichita, Kansas. To mark the occasion, “Together Wichita” (a community organization founded in 2014 to fund and develop lasting gifts to our city) came up with the idea of having local artist design and paint 13 Keeper of the Plains sculptures as part of a tribute to our city’s 150th birthday. To acquaint our group to some of the unique Keepers on display, we have put together a short Model A driving tour to visit some of the “Birthday Keepers” as well as other keepers on display. The tour will conclude with a socially distanced picnic in the College Hill Park next to the College Hill Keeper.

If you are interested in joining in on this Keeper of the Plains Tour, please call, text or email Kathy or Mike James at:

Email: kmkjames@gmail.com

Mike Ph. 316-253-1414

Kathy Ph. 316-734-2884

Sign Up Deadline: **Tuesday, September 22, 2020**

TRIBUTE TO MY PARENTS

This story is written by **Lance Brashear** about his parents **Garry and Mary Brashear**. The Brashears have maintained membership in Model A Clubs for 51 years in Kansas City or Wichita. Lance has just joined the Wichita A's during the pandemic. We look forward to meeting him in the near future.

After my dad completed the restoration of his 1929 Business Coupe, 51 years ago, he and my mother did what anyone would do. They joined the Model A Club. The previous year, dad had hauled the car from Weableau, Missouri to Kansas City. My mom, whom he was dating at the time, went along for the ride. The sales tax return states that it was purchased "As is-has been wrecked." A check receipt shows he paid \$650.

I have never known my father to be very organized, but he has left an impressive trail of documents that showcases the effort he poured into his antique Ford—a trail that begins where his memory ends. Sample swatches of upholstery are folded into manilla envelopes with postage marks from the early 1970's. A Ford production paint chart from Ditzler Automotive Finishes of Detroit is neatly filed with auto part sheets from shops across the Midwest. And all of this is padded by a plethora of J.C. Whitney receipts.

My mother, for her part, has shared with me what the paperwork cannot say. She pointed to the passenger door, telling me "That was my door," the one she helped to sand and paint. She recalled how my father painstakingly applied the individual numbered stickers to the odometer dial. I dare say I doubted her until I found a small sample sheet of those stickers in his files, which match exactly the size and font I see on the dash.

As antique car aficionados, and club members, my parents drove their Ford model A regularly, attending local events and tours, often in period costume. A few times they drove long distances, once going as far as Minnesota. A Kansas City Star news clipping from 1974 has a photo of them just before a trip to a regional Model A rally in Omaha. Dad drove the Model A and Mom drove the "backup" car, a 1949 Oldsmobile convertible, which my father also restored (and sold many years ago.) Model A road rallies were part of their early years of marriage.



Despite what I've learned from their stories and their files, some things remain unexplained. When fellow club member, Ron Eyres, helped me pull the Model A out of the barn this summer, the odometer read 299 miles—not enough to even get to Minnesota, let alone return. And I wondered, now why my Dad restored the Model A to begin with. Ron tendered a response, the same one that explains why a '37 Ford sits in his own garage: these were the first cars they ever knew.



Continued on page 6

Continued from page 5

Shortly after my first meeting with Ron, I visited my father and found an envelope of photos in the seat compartment of his walker—a seemingly random selection of well-worn, black and white pictures I did not know he had. I thumbed through them and found one dated 1957. My dad was 17 years old, slick and lanky, in white t-shirt, cuffed jeans, and casual, leather shoes. He leans against the passenger door, left leg on the running board, right thumb hooked to his pocket — the youthful image of a 1950's teenager. But, noticeably, the automobile is not from the 50's. That would have been cool. But the car in his photo—the Ford Model A—is self-defining. Though it doesn't answer all of the questions I have, for now it says enough.



* I would like to offer a special thanks to Ron Eyres for helping to repair and return my father's Model A to road worthy condition and for educating me along the way.

Ron Eyres has added that Tom Ruggles also assisted with a carburetor rebuild. Ron was able to upgrade wiring, install turn signals, cleaned gas tank and new tires

MAFFI Newsletter Minute

MAFFI Newsletter Minute

September 2020

As all of you know by now, 2020 has been a very unusual year and it has forced a reevaluation of all of our normal activities. Most of the Model A events for the year have been cancelled and it has left a void in our lives. Model A Day at the Gilmore was also cancelled to protect the health of all Model A Hobbyists. Our theme for this year's event was First Responders which is very appropriate with what is happening right now and this theme will carry over to next year's event.

Each year Model A Day generated roughly one third of the Model A Ford Foundation, Inc. (MAFFI) operating budget which includes operating the Model A Museum at Gilmore. With the cancellation of Model A Day we have a shortcoming of operating income for 2020. We have come up with a goal of \$30,000 to satisfy this shortfall.

We thought it would be best if we could come up with a way for all the National Club (MARC and MAFCA) Chapters to participate and in doing so would make each club's outlay reasonable. There are over 250 MAFCA Chapters and over 175 MARC Chapters along with some International Chapters. If the goal was set to have each Club put forth \$100 we would easily achieve the goal. We would then come up with a way of recognizing those clubs that helped get us through this tough time before next year's event.

There will be multiple ways for Club's to participate and any and all donations are welcome. We will have it set up on our Web Page along with sending out email blasts to all known club contacts. Additionally, we will try to promote on both MAFCA and MARC's Facebook pages and in their National Magazines with the goal of having contributions sent in by the end of the year. Individuals are welcome to participate in this as well if they wish. You can mail donations to PO Box 28, Peotone, IL 60468-0028

Any questions should be directed to Jerry Morrissey (jertrudy@sbcglobal.net)

Thank you,
Marsha Quesnel, MAFFI Trustee
clubcontact@maffi.org

MAFFI Newsletter Minute

MAFFI Newsletter Minute

August 2020

The Gilmore is excited to have a new mobile store which is a restored 1930 Ford Model A Pick-Up. The Garage Works students did the restoration on the vehicle and their operations staff created the slat walls, awning and sliding storage drawers.

The mobile store is stocked with impulse buy items like logo'd hats, T-Shirts, mugs as well as books, model cars and other items as well as snacks, sodas and water. They are able to utilize the mobile store on numerous locations around our campus. This is especially valuable when there are events after hours or when the museum store is closed.

The vintage signage lettering was done by a local artist and made to look like it was done in the 1930's. On your next visit to the museum, please check out our merchandise at the Gilmore Gift Shop.

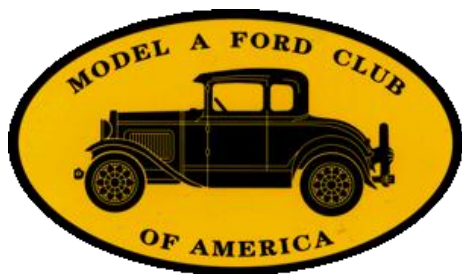
Thank You,

Marsha Quesnel
MAFFI Trustee

clubcontact@maffi.org



National Model A Clubs



MAFCA

250 S. Cypress St.
La Habra, CA 90631-5515
www.mafca.com
U.S. Membership Cost: \$50

**The Wichita A's Model A
Ford Club encourages
members to join both
National MARC and
MAFCA Clubs.**



MARC

6721 Merriman
Garden City, MI 48315
<http://modelarestorers.org>
U.S. Membership Cost: \$45

Tech Talk

MODEL A TECH TIPS

SEPTEMBER MODEL A TECH TIPS

1. When trying to remove a reproduction Aluminum Fan from the Water Pump "DO NOT" try to press it out with a Arbor Press without the correct backup Bushing or you will totally destroy the fan Pulley, as it is not strong enough to do this. If you do not have the correct tools, place a nut a few threads out from the fan, place a second nut on top of the first one, and jam the two together with two wrenches. Screw a bolt into the top Nut, and hold the Fan Pulley in one hand. Hit the bolt soundly and square on with a fairly good sized Hammer. It may take a few blows but it will finally brake free, saving the Fan.
2. When re-installing a Aluminum Fan tighten the nut down very tight, remove the nut and place a deep Socket over the Shaft that will not touch the threads inside. Hit the socket a couple of times with a Hammer. This sets the Fan tightly on the tapered Shaft, then replace the nut tightly, and Cotter Key.
3. A good Part Number for the Fan Belt is a Gates TR-20426, and a Daco 22425. They are very good Belts, and last a long time unlike the cheap China ones.
4. Out of 600W oil for the transmission, and Differential ?, mix regular 90-140W Gear oil 50-50 with STP. (This is what a number of the suppliers call 600W).

Jim Broadhead
Club Technical Writer.

Top 10 Reasons to Own a Model A

10. Your feet stay warm in the summer
9. You can cook while you drive
8. Beer cans some in handy for making shim stock
7. Gas leaks are no cause for alarm
6. All your other worries go away when driving a Model A
5. You can honk the horn all you want without receiving sign language
4. No wiper blades are needed even in the heaviest rains
3. What other car could tell you when it no longer wants its fan blade?
2. One can speed through town past a police office and all he will do is shake his finger
And the number #1 reason; U-turns are possible anytime, anyplace, anywhere

Copied from May 2020 Roadrunner

ERA FASHION

Horsehair Hats

Horsehair is quite literally the hair fiber obtained from the mane and tail of a horse. It may be used in combination with mohair, linen, cotton, or other fibers to achieve openwork weave. It is known also as Crin, the French term. Research shows imitation or synthetic horsehair, called by a variety of names, pedaline, or pyroxylin, was introduced during the 20's. The weight of this fiber is about the same as horsehair, but looks slightly shinier, and resembles fine fishing line.

- A. A variegated pink "horsehair" braid hat with a scalloped brim and a sweep of velvet flowers. c. 1928-1929
- B. A black "horsehair" cloche with a sweeping brim. This hat is accented with lovely velvet pink toned flowers and green stems. c. 1928-1929
- C. A wide brim summer hat of "horsehair" braid trimmed with a pink velvet ribbon and a large pink flower. c. 1928-1929
- D. A lavender "horsehair" braid cloche with a pleated brim and velvet trimming worn by a bride's maid. c. 1928

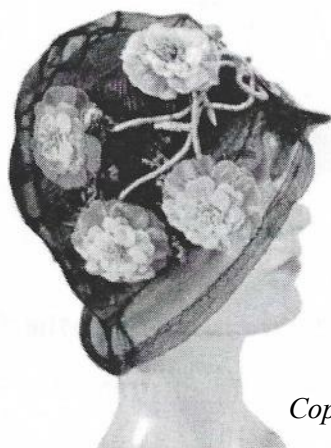
A



C



B



D



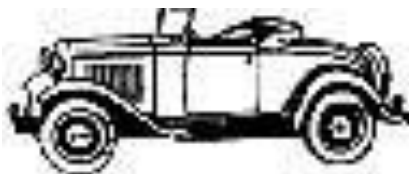
*Copied from a Book of Fashion
Facts Page 203*

LOCAL AND NATIONAL CALENDARS

2020 SWAP MEET & CAR SHOW SCHEDULE



October 7-10, 2020.....	Hershey Region AACA Swap Meet..... CANCELEDHershey, PA
October 14-17, 2020.....	Chickasha Fall Swap Meet...Grady Co. Fairgrounds.....Chickasha, OK
October 23-24, 2020.....	Sedgwick Street Rodders 21st Annual Swap Meet.....Hutchinson, KS



2020-2021 FUTURE REGIONAL & NATIONAL MODEL A MEETS

December 3-6, 2020.....	National Awards Banquet MAFCA..... CANCELEDFt. Worth, TX
April 9-11, 2021.....	MARC Membership Meet-Script A Region.....Bay City, MI
June 20-24, 2021.....	MAFCA National Tour.....North Conway, NH
June 7-11 2021.....	MARC National Meet.....Oshkosh, WI
2021.....	National Awards Banquet MAFCA.....Ft. Worth, TX
2022.....	MARC National Meet Nickel A Region.....Charlottesville, VA
2022.....	MAFCA National Convention—Alamo A's.....Kerrville, TX

ERIC WENINGER
OWNER

2045 S BEDFORD ST
WICHITA, KS 67207

316-619-1821 CELL
316-685-2553 SHOP

info@modelamedic.com

www.modelamedic.com

www.facebook.com/modelamedic

**THE
MODEL A
MEDIC^{LLC}**



NEW AND USED MODEL A FORD PARTS

SPECIALIZING IN FULL SERVICE REPAIRS
AND RESTORATION

ELLERMAN SPEEDOMETERS



STEWART-WARNER FOR
FORD MODEL A
OVAL OR ROUND
RESTORATION



DENNIS ELLERMAN
316.722.2107 OR
316.765.1506

ELLERMANSPEEDOMETERS@COX.NET

B&B Electric Motor Co.

Your One Stop Industrial Service Center

**New • Repair • Rewind
Electric Motors • Pumps**

Phone (316) 267-1238 • 1-800 499-1238

Fax (316) 267-0599 • Emergency (316) 641-0806

email: bbemc@msn.com • bbelectricmotor.com

332 Lulu
Wichita, KS 67211

Ed Giesen
Customer Service



COSH
REAL ESTATE SERVICES

RAY HARSHFIELD
Realtor

ADDRESS
1356 N Emporia St
Wichita, KS 67214

CELL: 316-305-1705
OFFICE: 316-260-2674
FAX: 316-260-9902
ray.harshfield@cosh.us

A-Z Model A Parts - Zanes

Ron and Sondra Kester, Owners

773 Central Street

Glade, Kansas 67639

Phone: 785-543-6729

Fax: 785-543-3013

e-mail: ron@ronsrestoration.com

Mishelle Whitney

mishelle@loraccompany.com

624 E. Harry Street
Wichita, KS 67211

316-263-2565 * 1-800-554-0144

Fax 316-263-5181

www.loraccompany.com

Lorac Company, Inc.

**Basement Window Well Cover * Powder Coating
* Custom Metal Fab * Media Blasting**

Wichita A's Model A Ford Club
P.O. Box 25
Wichita, KS 67201



Address Service Requested

Wichita A's Model A Ford Club Contacts

President, Alan Orr

president@wichitaas.com..... (316)

Vice President, Linda Kibbe

vicepresident@wichitaas.com.....(316)

Secretary, Judy Sharp

secretary@wichitaas.com.....(316)

Treasurer, Claudia Ellerman

treasurer@wichitaas.com..... (316)

Tour Chairman, Don Grabendike

.....(316)

Membership, Susan Stone

membership@wichitaas.com.....(316)

Newsletter Editor, Sheila Orr

editor@wichitaas.com.....(316)

Webmaster, Darren Schuster

webmaster@wichitaas.com

The Rumbleseat Review is the official publication of the Wichita A's Model A Ford Club, Inc., a local chapter of the Model A Ford Club of America and the Model A Restorers Club. It's purpose is to keep members informed of past, present and future events, activities, and club news. In addition, this newsletter includes articles and other information to aid in the restoration and enjoyment of the Model A Ford automobile.

This publication is mailed or emailed to members, prospective members and editors of similar publications prior to monthly meetings. Meetings are usually the fourth Monday of the month. Members may publish antique car related ads only for free of charge which includes items wanted, items for sale, or items for trade. We invite members to submit articles containing technical Model A information and other interesting tidbits for publication in this newsletter. Items to be published must be submitted to the newsletter editor by deadline shown in the calendar. Wichita A's membership dues are \$25.00, per year (October to September 30). MAFCA dues are \$50.00 per year and MARC dues are \$45.00 per year. A business card advertisement in this newsletter is \$25.00 per year.