



Wichita A's Model A Ford Club

Rumbleseat Review

October 2011

Volume 26 Issue 10

P.O. Box 25
Wichita, KS 67201

www.wichitaas.com

October 2011



S	M	T	W	TH	F	S
						1
2	3	4	5	6	7	8
9	10	11	12	13	14	15
16	17	18	19	20	21	22
23	24	25	26	27	28	29
30						

November 2011



S	M	T	W	TH	F	S
		1	2	3	4	5
	7	8	9	10		12
13	14	15	16	17	18	19
20	21	22	23		25	26
27	28	29	30			

December 2011



S	M	T	W	TH	F	S
				1	2	3
4	5	6	7	8	9	10
11	12	13	14	15	16	17
18	19	20		22	23	24
	26	27	28	29	30	31

OCTOBER REFRESHMENTS



- Judy Hill
- Glenda Sill
- Joyce Guinty
- Jeanie Cole
- Ruth Anne Praeger

CONTENTS



Calendar	1
Meeting Minutes	2
Announcements	3
Future Tours	4
Past Tours	5-8
They're Still Out There	9
Like Father Like Son	10
Local & National Calendar	11
Era Fashion	12
Classifieds	12-13

CLUB TOURS & MEETING SCHEDULE



October 2011

24..... Club Meeting at Minisa Park, 704 W. 13th N.... 7:00 PM
Program: Gary Carpenter owner of Automobilia. CLC

November 2011

Please note the change in newsletter deadline.

10..... Newsletter Deadline..editor@wichitaas.com.....
12..... Around Town Tour.....Grabendikes
28..... Club Meeting at Minisa Park, 704 W. 13th N.... 7:00 PM
Program: Wichita A's Charity Auction

December 2011

3..... Ladies Christmas Luncheon..... Ellerman/Ruggles
10..... Club Christmas Party..... Broadhead Family

January 2011

1..... New Years Day Model A Tour.....Grabendikes



WICHITA A'S MEETING MINUTES

September 26, 2011

President **Jim Broadhead** called the 294th meeting of the Wichita A's to order at 7:00 p.m. on September 26, 2011. The program on the Universal Oil Company was presented before the business meeting because the presenter had other obligations. After the presentation the meeting was called back to order.

The August minutes were approved as printed in the newsletter. Treasurer, **Ray Harshfield** gave a treasurer's report. **Bonita Graham** reported that **Jim Robertson's** dad and **Jeannie Cole's** son had passed away. **Bob Bruce** is home from having back surgery, and **Carl Houchin** is battling bladder cancer. **Merv Criser** is fighting back problems but still provided the club's refreshments this evening. **Ruth Anne Praeger** requested that members sign up for the 2012 cookie list as soon as possible, especially for the months of January and February. There were no WACCR or MARC/MAFCA reports

There was no Old Business.
New Business items: Club

dues for 2012 are due to **Susan Stone** by October 1. **Denny Ellerman** offered to share his free shipping on Hemming's 2012 calendars to any club members who would like to have one. They are \$14.00 each. The following events were reported on for the month of October: Oct. 1- Parade in Mt. Vernon, KS., Oct. 2- All Fords Day at Camp Hiawatha, Oct. 8- The Educational Tour to St. John, KS, and the Maize Fall Festival Parade. **Claudia Ellerman** reported that there are 49 ladies signed up for the Mosley St. Melodrama on December 3. She also shared with the club the final version of our Regional Meet's logo. **Brenda Broadhead** reminded the club members that signing up for the December 10th Christmas party at Prairie Pines will end the last of October. **Wayne Orr** contacted McCurdy Auction and they have agreed to run our Charity Auction in November.

The following officers: President- **Jim Broadhead**, Vice-President- **Chris Cushman**, Secretary- **Dawna Ruggles**, and Treasurer-

Ray Harshfield have consented to remain in their positions for the next club year. The president asked if there were other nominations from the membership for any of these positions. **Wayne Orr** moved that nominations cease and that a unanimous ballot be passed. The motion was seconded and passed. The previous officers will remain for the next year. **Jim Nungesser** will become our new Paraphernalia director. The President commended **Dale and Jane Heller** for their past dedication to this job. **Don Grabendike** will be the new Tour Chairman, replacing the great job done by **Richard Kibbe**. The rest of the committee chairs have agreed to remain in their current positions.

The next club meeting will be October 24, 7:00 p.m. at Minisa Park. The meeting was adjourned. Fellowship and refreshment followed.

Dawna Ruggles
Reporting Secretary

NOTE FROM THE PRESIDENT

We are starting a new club year and the officers and committees from last year have agreed to remain in their positions.

President – **Jim Broadhead**

Vice President – **Chris Cushman**

Secretary – **Dawna Ruggles**

Treasurer – **Ray Harshfield**

We have a couple changes in committee leaders.

Tour Chairman - **Don Grabendike**. Thank you, to **Richard Kibbe** for being the Tour Chairman for the past couple years. Club Paraphernalia – **Jim Nungesser**. Thank you to **Dale and Jane Heller** for handling the merchandise for a number of years.

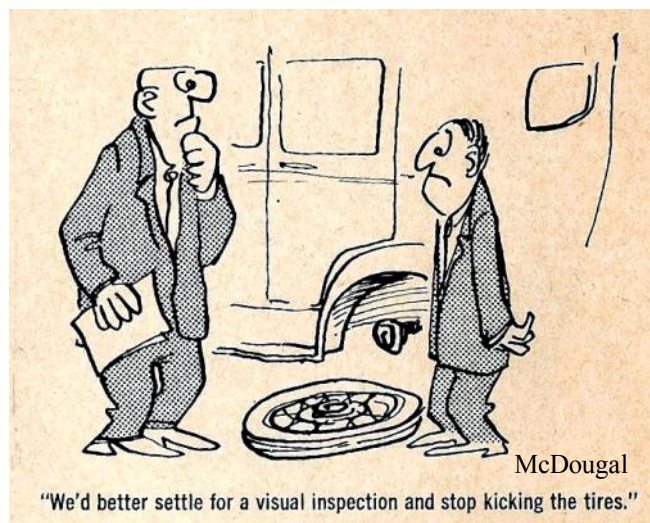
The Club Charity Auction will be at our November meeting. McCurdy Auction has agreed to conduct the auction again this year. We would like to have items from each club member so we can have a good auction but we also do not want the auction to go on for hours. Try and bring a good item that others would want to bid on.

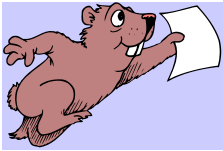
Jim Broadhead,
President

NOTE FROM THE EDITOR

Please note the November newsletter deadline has been moved up to Thursday, November 10th. It has been changed due to the Thanksgiving holiday.

Linda Kibbe Editor





ANNOUNCEMENTS

November 2011 Birthdays

- 1 Margi Hackenholz
- 2 Charlene Bosserman
- 2 Sarah Long
- 2 Ed Wilson
- 3 Don Grabendike
- 3 Mabel Oyer
- 3 Debbie Harvey
- 3 Charlie Sill
- 5 Dale Hancock
- 6 Susan Stone
- 7 John Reynolds
- 8 Sheila Orr
- 9 Peggy Chenoweth
- 9 Debbie Green
- 9 Taylor Merrill
- 9 Wallace Wade
- 10 Dave Burke
- 11 Nancy Slater
- 15 Tom Corns
- 15 Lavonne McLaughlin
- 15 Richard Sanchez
- 17 Howard Lumbert
- 18 Eric Broadhead
- 19 Lynn Andrews
- 20 Linda Kraus
- 25 Deb Hamlin
- 26 Bill Bosserman
- 27 Claudia Ellerman
- 29 Ed Giesen

New Member

Kim & Michelle Howard

.....
Newton KS 67114

.....
Looking for a Model A

Newsletter Deadline

Tue., November 10, 2011

Congratulations

Francis and Ruth Grady will be celebrating their 60th wedding anniversary on November 10th. Congrats to you guys!!!

Thank You!

I would like to thank all the (16) Model A's who participated in the Mt. Vernon parade. You all made it fun and successful. Lets do it again at the next 100th!! The anvil shot was great.

Ray Hoffmans

I would like to thank the club members for their support of flowers, cards, email and phone calls that I received during the time of my back surgery.

I am doing great!

Bob Bruce

DUES WERE DUE

OCTOBER 1st

HAVE YOU PAID YOURS??

About 60% of the Club Members have paid their 2012 dues. To pay your dues, send them to: Wichita A's, PO Box 25, Wichita KS 67201. If you are in doubt whether you have paid or not, check with **Susan Stone** (Membership Chairman) at the next meeting.

Sympathy

Prayers of sympathy for **Jeanne** and **Ron Cole** at the death of her son Ben in Ohio.

Prayers of sympathy for the Family of **Vinita Hawthorne** who passed away 10-13-2011.

For Sale

Club member, **Richard Sanchez**, a retired Auto Body technician, wants to sell his tool collection. John Force & Kenney Bernstein collector tool box sets, Snap-on-Tools, Mack Tools, Craftsman Tools, Air Tools, Auto Body Specialist Tools and paint guns.

Call:

Cookie Sign Up Sheet for 2012

It's time again to sign up for cookies. The sign up sheet will be available at the next meeting. Just pick a month that you would like to bring approximately 5 dozen cookies to the meeting. You do not have to be there to serve. Just send the cookies and we will take care of it. The cookies do not have to be homemade; you can just make it easy on yourself. We have 5 people bringing cookies each month as our membership is continually growing!!

Thanks for your interest in supporting this great club.

Ruth Anne Praeger

November 2011 Refreshments

Rex Kraus
Joanna Adams
Lynda Cushman
Jane Hellar
Barb Phye

FUTURE TOURS

Around Town Tour

November 12, 2011

In November we will tour the Wichita Scottish Rite Temple.

Depart Lawrence-Dumont Stadium 10:15

300 S. Sycamore (1 block west of McLean Blvd. 1 block south of Douglas)

Cost will be \$5.00 per member \$15.00 per guest



The temple is a little known architectural treasure of Wichita. Built in 1887, it holds the distinction of being one of, if not the most ornate commercial structures in Wichita. If you do not already know who the original owner was you will be surprised.

Following lunch there will be a special guided tour of the areas that most people have never seen. Be sure to bring your own flash light because most of these areas do not have lighting.

Sign up at the November meeting or call Don Grabendike



Ladies Christmas Luncheon

December 3, 2011

**Mosley Street Melodrama
234 N. Mosley**

Doors open at Noon for lunch

Show starts at 2 p.m.

Cost is \$5.00 for members and \$25.00 for non-members.

The luncheon is filling up fast. We have six seats left. If you would like to attend, please let Claudia or Dawna know as soon as possible. If we go over the number on our reservation, we'll try to increase it. If we can't, we'll put the extras on a stand-by list in case someone that made reservations can't attend.

Claudia Ellerman

Dawna Ruggles

Wichita A's Club Christmas Party

December 10, 2011

**Prairie Pines Christmas Tree Farm
4055 N. Tyler**

THIS IS THE LAST MONTH TO SIGN UP & PAY FOR THE CHRISTMAS PARTY!!!!

I will be giving our final count to Prairie Pines on October 28 so I need everyone to make and pay for their reservations. We have room for 150 so any extra seats will be opened up to other parties.

The party will be held on Saturday December 10 at Prairie Pines Christmas Tree Farm, 4055 N. Tyler Road. The Christmas Shop will open at 6PM and we will go to the theatre for dinner and show about 6:45PM. Cost for members is \$15 and non-members \$35.

Two Brother's BBQ will do the meal and the interactive Mystery is "Murder at Café Noir". We will have a fun evening so come and join us.

If you are not going to be at the meeting call and we will get you on the list. Checks can be made out to the Wichita A's with Christmas Party on the memo line and you can mail the check to us at 10405 West Bartlett, Wichita, KS. 67212.

Brenda & Jim Broadhead e-mail

Brigitte & Eric Baggs

PAST TOURS

Ice Cream Social

September 18, 2011

Thank you to everyone who made the Ice Cream Social a great success. We had 50 plus people, 9 freezers of ice cream and all were very tasty. I know because I tried all of them more than once.

Lots of cookies, pies, cakes and brownies, which all were very good.

The evening was very nice.

Thanks.

Darrell & Doris Jean Ludlow



Top left: Lynda Cushman & Judy Hill. Above: Denny Ellerman, Bob Phye and Darrell Ludlow. Below left: Jo-Ann Bruce, Sue Johnson and Ruth Goodman. Below right: Jim Broadhead, Lawrence Kottas and Bob Bruce visiting with Don Grabendike (standing).



All Ford Day

October 2, 2011



Right: One of three speedsters that arrived at the All Ford Day event.

*I would like to thank **Roland Dickey** and **Richard Kibbe** for taking these pictures.*



Virginia Voth came to enjoy the beautiful day and visit with everyone.



Left: Francis Grady and Dennis Anderson posing for the camera.

Below: Don Grabendike, our current Tour Chairman and the club Sunshine Lady Bonita Graham are chatting.



Above: Richard Kibbe showed up with his (in the process of being restored) 1930 Cabriolet.

Right: A mixture of all years and styles of Fords were driven to the "All Ford Day".



Educational Tour to St John Kansas

October 8, 2011

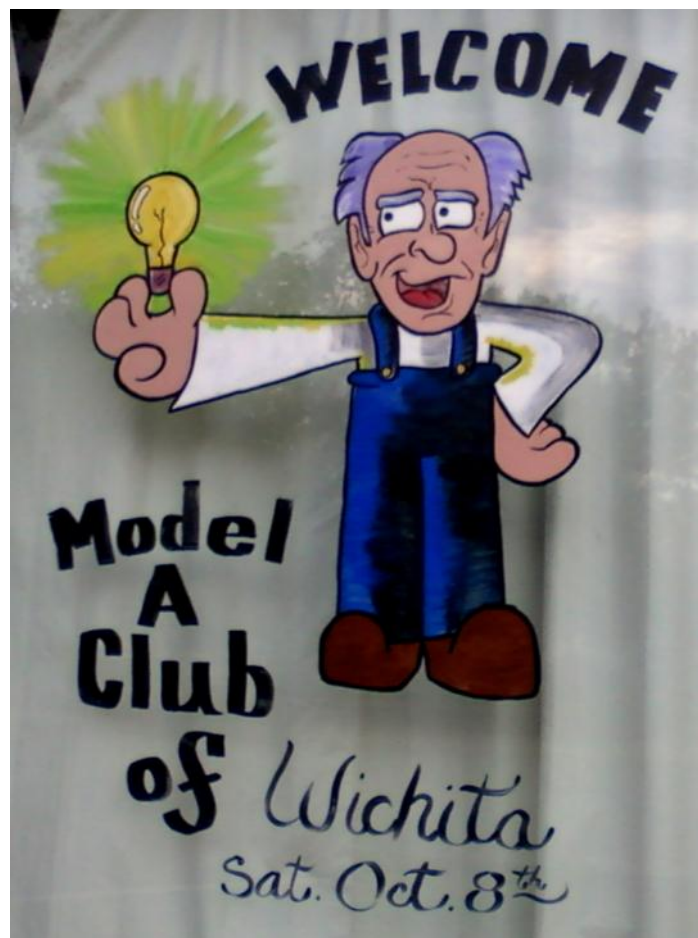
We had a great early turnout at 'o dark thirty' to head for St. John on Oct. 8 – 1st group out at 6:32 a.m. and 4th on their way at 7:02 – good record for 74 people in 35 A's and 3 moderns.

After a stop in Arlington for some delicious rolls, we headed on west. The first couple groups toured Hood's Haven and saw the scientific experiments made out of common items while the others saw the Victorian Museum.

We enjoyed a fine Italian lunch with our **Chef Ron Culbert's** secret family recipes for sauce and meatballs.

In the afternoon, we switched museums. The folks at the Science Museum enjoyed **Mr. James Hood's** explanations of how magnets, batteries, capacitors, light, sound, MRI and microwaves work along with some surprising, loud demonstrations! Yes, we came home with lots more knowledge than we left with. **Mr. Hood** is a remarkable almost-ninety year old teacher who is still excited to teach!

We ran in rain almost all the way home. Yea Rain!!! If a Model A tour is what is required for rain, we didn't do enough of them this year. The rain did cause a couple car running problems but with a towel and a plastic bag those problems were solved. It took **Ed Giesen** and his can of gasoline to solve another problem on the way home. Seems someone thought their car would run forever without gas. Pictures are posted on the St. John newspaper website: <http://www.sjnewsonline.com>



A few of the Model A's parked at St. John's Square.



Bill Shearer

***James Hood** is a remarkable almost-ninety year old teacher who is still excited to teach! He was really surprised to see one of his former students, **Bill Shearer**.*



2nd group are standing outside, dodging the rain, while the first group is having a tour of Hood's Haven.



***Roger Graham** is attempting to pedal fast enough to create enough electricity to light up a light bulb.*



***James Hood** showing **Corky Armstrong** how he could light up a fluorescent light with his bare hand.*



***Richard Kibbe** got up the next morning and found a flat tire. He were extremely lucky to get home and not have to change the tire in the rain. **Scott Guinty** had to fix a flat tire in St. John's before leaving for home.*



***Ray Harshfield** presenting a club donation to **James Hood** for his museum.*

THEY'RE STILL OUT THERE

Last spring **John (Doc) Weninger** drove his AA truck to the Thursday morning coffee klatch near 53rd and Meridian. A man by the name of Hays that lived in the area came by and engaged **Doc** in conversation about Model A trucks.

When his father and family moved to Wichita in the mid fifties they brought their '29 Model A truck from the farm near Oakley in Logan County.

For a while the truck sat out in the weather. Then they put it in a block building in the 4800 block of North Arkansas where it remained for the next 50 years or so. It was last tagged in '62. Being a storage building all sorts of boxes and other "stuff" was gradually piled all over it.



The device on the cowl that resembles a stove pipe is actually a gas tank. The original tank rusted thru years ago and the owner added this tank to keep it going. The front bumper was removed so the truck would fit in the building.

The father passed away in 2000, and now 11 years later the son thought maybe it was time to sell it. **Doc** didn't think he needed another truck so he told his son **Eric**, The Model A Medic, about it. **Eric** wasn't quick to check it out since he already has a serviceable '30 truck.

After the hot weather subsided in mid Sept. **Eric** went to look at the truck, purchased it and hauled it home. Within an hour he had it running. It ran with some glitches but after replacing the carb and some wiring it really runs great. The radiator is decrepit and the hoses are hard as a rock but it doesn't heat up.

Eric doesn't really have any plans for the truck but it appears to this writer that he may be getting attached to it. RG



The grain sides must have been stored away as they still have the original paint. With single wheels this truck is rated at 1 ton The rear fenders on this model usually took quite a beating and were often discarded. The 1 1/2 ton model had dual wheels and no fenders.



After 50 years the engine came to life with very little effort. It may be "fired" but it runs good.



Marc Wendt brought his very attractive '30 Cabriolet into The Medic this month for a minor electrical problem.

LIKE FATHER LIKE SON

Charlie Guinty worked for KG&E, now Westar Energy. 38 years, before retiring in '89. At the time of his retirement the family lived in Ark' City and chose to remain there.

A few years later **Charlie** restored a '30 Model A Tudor and was ready to join the club. His wife, **Joyce** said that Model A's were his hobby and she didn't want anything to do with them. In '99 he registered her for the ladies' luncheon program at the Regional Meet we held here in Wichita. She reluctantly went to the meeting, came out with a smile on her face and is still smiling today. **Joyce** we're so glad you decided to join us.

Their son, **Scott** was a "go fast street rodder." **Scott** helped his dad restore the Tudor and then they started on a '29 Pickup. About this time **Scott** changed his tune and decided that Model A's were "pretty cool". He started looking for his own A and found a basket case '29 coupe at a reasonable price in Newkirk, Ok.

Scott started to work on the coupe but progress was slow. **Scott** is the type of guy that wants to know everything about the car he is working on and is prone to adding modifications for performance.

A few months later he found a good running 31

coupe and he bought it so he and **Judy** would have a car to tour in. They have a single car garage at their home here in Wichita so the 31 coupe rests in the back yard. They named it the, yard car.

Both couples with running cars,

started to go on a lot of tours attending local tours, regional meets and even national meets.



Scott and Judy with their yard car.



Coupe and Victoria found near Emporia

Somewhere along the way, **Wayne Orr** put the **Guintys** on to some Model A's in a barn near Emporia. **Charlie** came home with a 30 Coupe and **Scott** a 31 Victoria. They stored both cars away for future restoration.

After a few years the "yard car" was deteriorating quite a bit so **Scott** took time out to paint it. It looks good but still rests in the back yard with no cover.

After the Tudor and Pickup, **Charlie** restored a 31 SW Fordor and finished it within the last year. He chose to air condition this car.

Earlier this year **Scott** finished the '29 coupe complete with air conditioning.

Scott has already started on the Victoria. He's doing the wood framework first which is obviously a major undertaking. **Charlie** is going to start on the 30 coupe next. Like father like son, RG



Above: Joyce and Charlie Guinty



Left: Five finished, two in process



Model "A" Museum Update

The First Model "A" Gathering at the Gilmore Car Museum, Hickory Corners, MI took place on Sept. 17, 2011 and it was a resounding success. About 130 Model A's came through the gate as well as between 300-400 people. Many folks were dressed in the Era Style and enjoyed their picnic on the grounds. Stan Johnson, current president of MAFFI gave an overview of the progress toward the museum to an appreciative audience and a total of \$11,600 was given to the museum fund from clubs, individuals, the 50/50 raffle and a "Pass the Hat" offering.

This doesn't put us over the top but brings our total to about \$730,000. The MAFFI Board is proceeding with the talks with the builder in an effort to break ground in the spring of 2012. We need your help now!!! Do you realize that if every person who owned a Model A would give \$10 we would reach our goal?

Perhaps your club would consider this idea which comes from the Missouri Valley MAFC. A silent auction of items from your home or garage which you no longer want and need a good home, the proceeds of which would go to the Model A Museum Fund. If every member bid at least \$10 for an item, we would easily make our building goal. This would be a good winter time club activity, why not give it a try? Loukie Smith, MAFFI Trustee

MAFFI WEBSITE www.maffi.org

WICHITA A'S CALENDAR

Nov 12, 2011.....	Around Town Tour.....Grabendikes
Dec 3, 2011.....	Ladies Christmas Luncheon.....Ellerman/Ruggles
Dec 10, 2011.....	Club Christmas PartyBroadhead Family
Jan 1, 2012.....	New Years Day Model A Tour.....Grabendikes

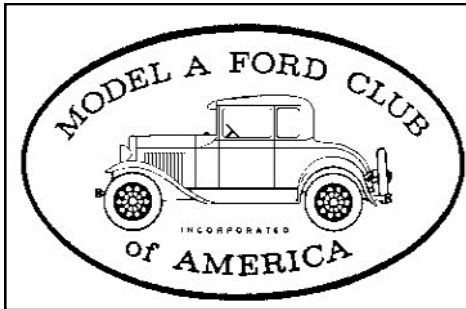
2011 SWAP MEET SCHEDULE

Oct 22, 2011.....	Sedgwick Street Rodders Swap Meet, KS State Fairgrounds.....Hutchinson, KS
Oct 29-31, 2011.....	Conroe Swap Meet (Montgomery County Fairgrounds).....Conroe, TX
Feb 3-4, 2012.....	37th Annual Sunflower Swap Meet.....Wichita, KS

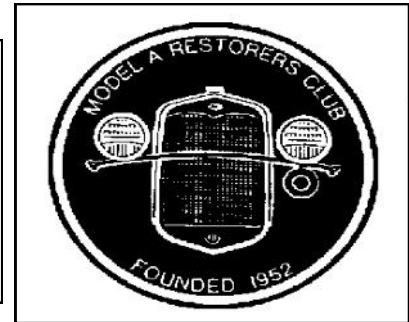
2011 - 2014 FUTURE REGIONAL & NATIONAL MODEL A MEETS

December 1-4, 2011.....	MAFCA Annual Membership Meeting.....Santa Rosa, CA
April 12-15, 2012.....	MARC Membership Meet.....Perrysburg, OH
June 11-15, 2012.....	Central Iowa Model A Ford Club Regional Meet.....Altoona, IA
June 11-15, 2012.....	MARC National Meet.....Oshkosh, WI
June 18-22, 2012.....	MAFCA National Convention.....Marquette, MI
September 16-19, 2012.....	MARC National Tour.....Chattanooga, TN
April 11-14, 2013.....	MARC Membership Meet.....Charlotte, NC
June 17-21, 2013.....	Wichita A's Regional Meet.....Wichita, KS
June 24-28, 2013.....	MARC National Meet.....Lexington, KY
July 14-18, 2014.....	MAFCA National Convention.....Tacoma, WA
2014.....	Tulsa Model A Club Regional Meet.....Tulsa, OK

NATIONAL MODEL A CLUBS



The Wichita A's Model A Ford Club encourages members to join both National MARC and MAFCA Clubs.



MAFCA
250 S. Cypress St.
La Habra, CA 90631 - 5515
U.S. Membership Cost: \$40

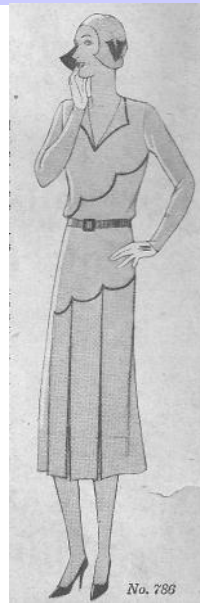
MARC
6721 Merriman
Garden City, MI 48315
U.S. Membership Cost: \$38

ERA FASHION



No. 2605

767



786

No. 2605. The early fall days seem to demand at least one woolen frock, so here we have another suggestion for the stouter figure. The soft wool crepes and challis are best of course and could be used for these flares and folds. The vest has inserted contrasting material.

No. 767. The new season says satin is to be one of the leading fabrics. Isn't this model perfect for lovely black satin with a collar of cream color? The simplicity of this garment adds to its charm since it has the new wrap around effect in the blouse another new fall forecast, in fashion.

No. 786. The college girl will choose such a design as this for the favorite woolen garment to receive the approval of her college friends. Tweeds are again to lead this fall for sport and tailored wear. The diagonal lines in scallops are the only trim.

Successful Farming September 1930

PLEASE PATRONIZE OUR ADVERTISERS



BRASSWORKS
Aries Mufflers

New and Used Antique Parts

MILT'S MODEL 'A' REPAIR, PARTS & SALES

F.S. Modern Ignitions • Mitchell Overdrive
Overdrive & 4-Speed Transmissions Installed

806 W South Avenue S
Blue Springs, MO 64015
hesfrt@sbcglobal.net

Milton Hessefort
816-229-1949
Cell 816-590-4317

Dwayne E. Green, AAMS®
Financial Advisor

Edward Jones
MAKING SENSE OF INVESTING



9747 E. 21st St. North
Suite 127
Wichita, KS 67206
Bus. 316-630-8105 TF. 800-290-0754
Fax 888-273-9408 Hm. 316-634-1482
www.edwardjones.com

37th Annual Sunflower Swap Meet

Kansas Pavilions, Wichita, KS
www.wichitaas.com

February 3-4, 2012



a Nationwide® company | On Your Side®

Tri County Insurance Ctr LLC
Cassie Murray

PO Box 670
Belle Plaine, KS 67013
407 N Merchant Street
Belle Plaine, KS 67013

1-800-488-2408

Tel 620-488-3831

Powder Coating Services

A Division Of

LORAC COMPANY

"FOR A DURABLE OVEN-CURED FINISH"

Motorcycle & Auto • Lawn Furniture • Hobbyist
Manufacturers • Aviation • Agriculture • Many Others

Sandblasting Facilities

316-263-2565 • 800-554-0144 • Fax 316-263-5181

MITCH HERRING

COATINGS MANAGER

624 E. Harry

Wichita, KS 67211-4205

Darrell's Tile

1225 E. Pawnee • Wichita, KS 67211
(316) 265-8392

STAN LUDLOW

Marble, Granite, Limestone
Ceramic Tile, Mexican Tile
Professional Installation Since 1980



Robert K. Anderson
ATTORNEY

ESTATE PLANNING

Old Town Square
300 N. Mead, Suite 200
Wichita, KS 67202-2722
randerson@morrislaing.com

T: 316.262.2671
F: 316.262.5991

LAW OFFICES OF
MORRIS LAING
Evans Brock & Kennedy, Chtd.

The Model "A" Medic LLC

New and Used Model A Ford Parts.
Specializing in Full Service Repairs & Restorations.
*Free Parts Delivery to Local Events and Monthly
Club Meetings!!!!*

If you are looking for a Insured, Professional Shop to do your
Model A Restoration, The Model A Medic is the place!
Eric Weninger • 2045 S Bedford St., Wichita, KS 67207
(316) 619-1821 Monday - Friday 9am - 6pm CST
www.modelamedic.com



www.amfam.com

PAM KIRK, Insurance Agent

1317 NORTH MAIZE ROAD, SUITE 103
WICHITA, KANSAS 67212

Office: 316-729-9797
Fax: 316-729-5458
E-Mail: pkir1@amfam.com
Website: www.pamkirkagency.com
Access Anytime: 1-800-MYAMFAM (800-692-6326)



RAY HARSHFIELD

Office: (316) 942-1925
Fax: (316) 943-1311
Cell: (316) 305-1705
www.wichitagoldkey.com

GOLD KEY
REALTORS®

3535 W. 13th
Wichita, KS 67203



Speedometer Repairs

www.cushmanspeedometer.com
info@cushmanspeedometer.com

5704 N. Athenian Ave.
Wichita, KS 67204
(316) 648-2444
(316) 832-9090

Clarence Howland

1911 Briarcliff
Emporia, Kansas 66801

BUY - SELL - TRADE
Antique Cars and Parts

Cell: (620) 341-3533
Home: (620) 342-0215



Mobile Model A Service

John D. Stone - 316-250-0316

Email: jrock1930@hotmail.com

Specializing in Service,
Winterization, Tour Readiness,
Parts Location, and Minor Repairs



WALLACE W. WADE
SPECIALTY TIRES

530 Regal Row
Dallas, Texas 75247
(214) 688-0091
Fax (214) 634-8465
1-800-666-TYRE
www.wallacewade.com
wallacewade@earthlink.net

Vintage Tires
ANTIQUE & CLASSIC
CARS - TRUCKS
MILITARY - TRACTORS

WALLACE W. WADE

1 800 666 TYRE

SPECIALTY TIRE DISTRIBUTOR
"IF WE DON'T HAVE IT - WE'LL GET IT"

We've got your
COLLECTOR CAR COVERED

JAMES & JUDI SHARP
1721 E OSAGE, SUITE 100
DERBY, KS 67037
(316) 788 5257

Fueled by:



Collector Car Insurance®

B&B Electric Motor Co.

Your One Stop Industrial Service Center

New • Repair • Rewind
Electric Motors • Pumps

Phone (316) 267-1238 • 1-800 499-1238
Fax (316) 267-0599 • Emergency (316) 641-0806
email: bbemc@msn.com • bbelectricmotor.com

332 Lulu
Wichita, KS 67211

Ed Giesen
Customer Service

Z Model A Parts - Zanes

Ron and Sondra Kester, Owners

773 Central Street
Glade, Kansas 67639

Phone: 785-543-6729

Fax: 785-543-3013

e-mail: 2officegirls@ruraltel.net



BARNEY L. CAPPS
President/General Manager

2121 S. Edwards
Wichita, KS 67213-1868

(316) 942-9351
Fax (316) 942-6771
Mobile (316) 734-5000

SELECT-A-CAR

Donn Mason
Owner

Sales Representative
Bucher Sales
300 S. Winfield
Rock, KS 67131

Phone: 316-393-3269
Fax: 316-722-6238
Email: dpmason@abcglobal.net

Jim's Model "A" Starter & Generator Repair

Specializing in 12 Volt Starters
3456 Bonn, Wichita, KS 67217
(316) 943-7033

HAYSVILLE SANDBLASTING

2075 Emmett Haysville, KS 67060

FULL SERVICE SANDBLASTING

In Shop
Portable

Phone: 522-6793

Commercial
Residential

Wichita A's Model A Ford Club
P.O. Box 25
Wichita, KS 67201



**Dues are due. Have
you paid yours yet?**

Address Service Requested

Wichita A's Model A Ford Club Contacts

President, Jim Broadhead

president@wichitaas.com.....

Vice President, Chris Cushman

vicepresident@wichitaas.com.....

Secretary, Dawna Ruggles

secretary@wichitaas.com.....

Treasurer, Ray Harshfield

treasurer@wichitaas.com.....

Tour Chairman, Don Grabendike

tourchair@wichitaas.com.....

Swap Meet Chairman, Frank Chenoweth

swapmeetchair@wichitaas.com.....

Swap Meet Secretary, John Stone

swapmeetsec@wichitaas.com.....

Membership, Susan Stone

membership@wichitaas.com.....

Newsletter Editor, Linda Kibbe

editor@wichitaas.com.....

Webmaster, Darren Schuster webmaster@wichitaas.com

The Rumbleseat Review is the official publication of the Wichita A's Model A Ford Club, Inc, a local chapter of the Model A Ford Club of America and the Model A Restorers Club. It's purpose is to keep members informed of past, present and future events, activities, and club news. In addition, this newsletter includes articles and other information to aid in the restoration and enjoyment of the Model A Ford automobile.

This publication is mailed to members, prospective members and editors of similar publications prior to monthly meetings. Meetings are usually the fourth Monday of the month. Members may publish antique car related ads only for free of charge which includes items wanted, items for sale, or items for trade. We invite members to submit articles containing technical Model A information and other interesting tidbits for publication in this newsletter. Items to be published must be submitted to the newsletter editor by deadline shown in the calendar. Wichita A's membership dues are \$25.00 (new members) and \$20.00 (renewals), per year (October to September 30). MAFCA dues are \$40.00 per year and MARC dues are \$38.00 per year. An advertisement in this newsletter is \$15.00 per year.