



WICHITA A'S MODEL A FORD CLUB

Rumbleseat Review

P.O. Box 25
Wichita, KS 67201

www.wichitaas.com


May June 2015

Volume 30 Issue 5

May 2015

S	M	T	W	TH	F	S
					1	2
3	4	5	6	7	8	9
10	11	12	13	14	15	
17	18	19	20	21	22	23
24		26	27	28	29	30
31						

June 2015

S	M	T	W	TH	F	S
	1	2	3	4	5	6
7	8	9	10	11	12	13
14	15	16	17	18	19	20
	22	23	24	25	26	27
28	29	30				

July 2015

S	M	T	W	TH	F	S
			1	2	3	4
5	6	7	8	9	10	11
12	13	14	15	16	17	18
19	20	21	22	23	24	25
26	27	28	29	30	31	

"June" Refreshments

- ♦ Pat McHenry
- ♦ Judi Sharp
- ♦ Keri Unruh
- ♦ Marie Hildibrand
- ♦ Roy Goats

CLUB TOURS & MEETING SCHEDULE

May 2015



18..... Club Meeting Picnic..... ..Watson Park

June 2015



7-12..... MAFCA National Tour Lobster & Lighthouses..... ..State of Maine
8-12.... Regional Meet by the NW Missouri Model A Club ..St. Joseph, MO
14..... All Wheels Day/ Lake Afton..... ..J Clark
21-26... MARC National Meet in Ontario, Canada..... ..Niagara Falls
29..... Club Meeting at Minisa Park, 704 W. 13th7:00 PM

July 2015



4..... 4th July Parade & Picnic in Derby..... ..Sharp/Hilemans
14..... Newsletter Deadline..... editor@wichitaas.comLinda Kibbe
27..... Club Meeting at Minisa Park, 704 W. 13th7:00 PM

WHAT'S INSIDE

Calendar	1
Minutes & Editor Note	2
Future Event & Pres Note	3
Alpaca Tour	4
Announcements	5
Tech Talk	6
Era Fashion	7
Swap Calendars	8
Classified	9

WICHITA A'S MEETING

April 27, 2015

President **Dennis Ellerman** called the April 27th 2015 meeting of the Wichita A's to order at 7:00 P. M. A new member **Bob Broeckelman** was introduced. The minutes of the March meeting were approved as printed in the newsletter. A summary of the expenses for the month was given by **Rex Kraus**, Treasurer. **Bonita Graham**, Sunshine Lady reported the following: **Jerry Abplanalp** (a machinest friend) passed away, **Bob Bruce** did not have Chemo this week and was feeling a little stronger, **Joyce and Charlie Guinty's** newborn great-grandson had been hospitalized with a heart problem but is now home and **John (Doc) Weninger** has moved to Regent Park which is located near 13th and Webb Road.

Brenda Broadhead had no report for MARC and MAFCA. **Jim Nungesser** was not present at this meeting so there was no report given for the Wichita Area Car Council.

Tom Ruggles presented a report on the expenses for the final 2014 Swap Meet.

Dennis asked for a volunteer to organize the December Party. **Dennis** indicated perhaps there might be a change in party plans if a volunteer does not come forth.

Richard Kibbe reported on the success of the "Shake Down Tour" to Moundridge and Carlton, KS.

Dennis announced the upcoming Northwest Missouri Regional Meet and there was still time to sign up for the tour to St. Joseph, MO.

Don Grabendike, tour chairman, discussed the revised policies as set by the Wichita A's Board for tour expenses and reminded tour leaders that new packets, explain

ing the changes, can now be picked up. He announced that a Hubley trial practice run would be held so that all people that are taking part in the race at the St Joseph tour will be ready. The date will be announced later.

It was announced that the 16th Annual McPherson College Car Show will be hosted on May 2nd.

Linda Kibbe announced that news items for the May/June newsletter should reach her by May 5th. There will be a combined May and June Newsletter.

Claudia Ellerman reminded the club about the upcoming day tour which will be May 9th. The club will leave at 7:30 A.M. from the Ridge & 37th Kwik Shop and travel to the Peabody, KS area for touring an Alpaca farm to watch the shearing of the Alpaca, lunch in Peabody and then to Marion, KS for ice cream and antique shopping.

It was announced by Dennis that the May meeting would be at Watson Park on May 18th for a picnic and covered dish dinner. The club will be furnishing the hot dogs and trimmings with the picnic beginning at 6:00 P. M.

Jim Clark announced the date of the All Wheels Day to be June 14th.

The refreshments for the evening were furnished by **Arley Bennett, Norma Agard, Jane McLaughlin, Lenette Kottas and Grace Brooks**.

Chance Hayes, a Warning Coordination Meteorologist presented a program telling the warning signs of storms.

Meeting adjourned.

Joanna Adams, Secretary

Note From The Editor

Richard and I are going to attend the MAFCA National Tour in Maine. The June issue of the Rumbleseat Review has been combined in this issue. During May and June, if you have any information you would like to share with the club members, please send me an email and I will forward your information to the club.

Linda Kibbe, Editor

The Wichita A's meet on the 4th Monday of the month with exception to the month of May and December. Due to Memorial Day Weekend in May, the meeting is held on the 3rd Monday of the month. We do not hold a meeting during the month of December. Other meeting changes will be published in the newsletter prior to the scheduled meeting. The meetings are held at Minisa Park, 704 W. 13th, Wichita, KS. Meeting time is 7:00 PM.

PRESIDENT'S MESSAGE

I often think of the Wichita A's as an extended family. Some of you have been in the Model A family for fifty years or more while most of us are a bit newer. What I enjoy most is when I hear of someone helping another Model A'er with a problem they are having with their Model A. Sharing the knowledge and spending time together is what builds the strength of our club. In preparation for our trip to Maine I needed some help and two club members were glad to help. I enjoyed the time together as much as the improvements to our car. If you are having an issue with your Model A and are unsure what to do just ask around and you will find someone who can help and the time together will be the best part.

I have been checking the parts and tools list, as well as the condition of our car, in preparation for the trip to Bar Harbor, Maine with the Kibbe's and Phye's. Having decided to make the trip nearly a year ago there was no hurry in getting the preparations completed. Suddenly, it's three weeks away, and I've much to do. It occurred to me that when I was a young boy

my grandmother would say, "As you get older time passes much more quickly," and I thought she must be losing it. Now that I am closer to that age, time does seem to be picking up speed. Here we are in mid-May and soon half of the year will be history. I look forward to the swapping of stories of our Bar Harbor adventure with the stories coming from the Northwest Missouri meet.

Join us for hot dogs and covered dish / pot luck in Watson park May 18th. We have the large shelter on the west side (same place as last year) from 5:00 until 9:00 pm and will plan to eat around 6:00. Hot dogs, buns, condiments, iced tea and water as well as paper goods and plastic ware will be provided. You bring your favorite side dish (with food inside) and together it will be a great meal. It will NOT be 100 degrees, I promise.

Dennis Ellerman, President

FUTURE ACTIVITIES AND TOURS

Lake Afton All Wheels

All wheels day at Lake Afton is June 14th. Lunch at noon. Drinks and refreshments. Questions call **Jim Clark**

4TH JULY PARADE & PICNIC

Saturday, July 4, 2015

You can sign up during the May and June club meetings. If you can't sign up at meetings please call:
James and Judy Sharp
Gary and Donna Hileman

AUGUST TOUR

Fall tour to Waterville, Blue Rapids, and Marysville, KS. Train ride, Swedish Cabin, Vintage Clothing Store, Black Squirrels (Official mascot of Marysville, Ks), Pony Express Home Station No.1, Pony Express Sculpture, Post Office Mural, Historic Hotel and other points of interest. This will be a 3 day tour. More info later.

Gilbert & Joanna Adams



PAST EVENT

PEABODY/MARION ALPACA TOUR

May 9, 2015

After assessing the threat of severe weather and deciding we could make it there and back, 35 people in 14 Model A's and 4 modern cars took off for the Prairie Oak Alpaca Farm north of Peabody. It was cool and cloudy, but no rain. We all arrived safely even with a few wrong turns because of the complicated instructions from the tour guides. Jeff and crew were shearing an alpaca when we arrived. He explained the process and the different grades of fiber that are obtained from each alpaca. While the alpaca is tied up for the shearing, she also gets her immunizations, toenails clipped, and teeth ground down. We watched several alpacas go through the process. Some were more vocal than others, but it went smoothly with all.

We watched a co-worker of Jeff's spinning yarn from the fiber from the alpacas that had just been sheared. She explained the process and showed us various yarns she had already spun from dog hair and alpaca.

We then had a great lunch at Pop's Diner in Peabody. After lunch, some folks decided to head back to Wichita because of concerns about the weather. The rest of us headed to Marion to the Alpaca shop to view finished products and have ice cream. With 8 flavors of soft ice cream, everybody was able to get what they wanted, including hot fudge sundaes.

After checking the radar, we decided to head back to Wichita without visiting the antique stores. We drove through some heavy rain, but nothing severe. All made it home without any problems.

Claudia & Denny Ellerman



Model A's at the farm.



An Alpaca getting sheared. His front and hind legs are stretched with a rope so he is unable to move during the shearing process.



This alpaca turned out to be a pretty good at spitting. A lady was standing some distance away and the Alpaca spit a strong smelly substance from his stomach all over her white sweater. They put a sock over his mouth to prevent future spits.



This Alpaca was glad it was over.



The bottom teeth are getting ground down.

A demonstration on how they spin alpaca hair.



ANNOUNCEMENTS

★HAPPY★
BIRTHDAY!

June Birthdays

1 Kelly Huscher
2 Aaron Frazer
3 Rex Kraus
3 Jack Shumard
4 Tonya Jordan
4 Glenda Sill
10 Duane Gosch
11 John Weninger
12 David Anderson
13 Steve Albers
13 Helen Louise Beaver
15 Mary Brashear
15 June Hall
18 Alan Orr
19 Lenette Kottas
20 Trudee Harshfield
20 Sharon Hessefort
21 Phyllis Reynolds
23 Diana Grube
24 Bob Johnson
24 Phil Ross
24 Sheryl Wilson
27 Gary Cowan
27 Judi Sharp
28 Bob Bruce
29 Rae Ellen Dickey

July Birthdays

5 Ruth Kalp
5 Jean Titus
7 Don Short
9 Rachel Schober
10 Jean Burke
11 Richard Craft
11 Robert Harvey
11 Tom Ruggles
12 Candy Dean
12 Brian Slater
15 Ruth Grady
18 Denise Ashford
20 Larry Andra
22 John Davis
22 Mike Wilson
23 Jack Grant
24 Nancy Niederschulte
24 Johnnie Roberts
25 Don Shearer
25 John Stone
25 Marc Wendt
26 Sue Crockett
27 Verla Howland
28 JoAnn Bruce
28 Becky Price
28 Abby White
29 Francis Grady
30 Henry Ford



Sunflower Charity Swap Meet Update

Three announcements from the Sunflower Charity Swap Meet:

Since the swap meet is returning to the Kansas Pavilions for 2016, vendors who signed up for the Casino location will be allowed to reserve their former spaces at the Kansas Pavilions.

Wichita A's members who had vendor spaces at the 2015 swap meet, but did not sign up for spaces at the Casino swap meet location, can reserve their old spaces at the Kansas Pavilions.

Decision on whether or not there will be a car sales barn has not yet been made.

For either 1 or 2 above, you must contact Rene Saindon and renew by June 30, 2015. Email reneronsignco@aol.com or call 316-648-6587.

Newsletter Deadline

Tuesday July 14, 2015
Tuesday August 11, 2015

WEDDING ANNOUNCEMENT



Don Waller and Donna Pearce are getting married on June 26, 2015. Their reception will be held at the church located at 147 S. Hillside, Wichita, KS at 7:30 PM.

REFRESHMENT COMMITTEE



May 2015

Due to the picnic there will not be a refreshment committee.

July 2015

- ◆ Linda Lumbert
- ◆ Kay Lumbert
- ◆ Bev Grant
- ◆ Susan Stone
- ◆ Ruth Anne Praeger

August 2015

- ◆ Linda Kibbe
- ◆ Bonita Graham
- ◆ Doris Jean Ludlow
- ◆ Judy Hill
- ◆ Carolyn Nungesser

September 2015

- ◆ Francis Grady
- ◆ Ruth Goodman
- ◆ Randy Frazer
- ◆ Peggy Chenoweth
- ◆ Trudee Harshfield

Tech Talk

Model A Grounding System



A poor ground circuit can be an invisible troublemaker on the Model A, probably more so than most realize because it is usually intermittent.

The battery ground cable is connected to the center frame cross member. With rusty, greasy, or even freshly painted components, the ground path to the engine can be interrupted. With the generator or alternator anchored to the engine it is imperative that the ground circuit be there.

When the Model A was new the ground path could travel along the frame rails and through the front or rear springs. The front spring connected to the wishbone assembly, which provided a path to the clutch housing which was a good connection to the engine. The rear spring provided a path through the differential housings, then up through the torque tube to the transmission and finally the engine.

With age, rust would form on the springs and a build up of mud and grease on and between connecting components, the potential for ground interruption exists. Additionally, on a fresh restoration, if the springs are given several coats of paint, ground continuity can be interrupted.

The rear engine mounts do not provide a good ground path because of the rubber pads that insulate them from the frame. Float-A-Motors are even worse because of the rubber donuts used. There is some grounding potential from the gas line to the gas tank and subsequently through the body bolts, but this path has a lot of room for deterioration.

Aside from all these factors, all new Model A's came with engine splash pans. These pans provided an excellent path for ground to reach the engine. If you choose not to install these pans on your Model A, then you should definitely install an extra ground cable for assurance that you always have ground, at the engine.

This can be accomplished by purchasing a 24" ground or battery cable with eyelets on each end. (A 12" cable is better but harder to find.)

Attach one end to the center cross member using the same bolt that fastens your regular ground cable. Attach the other end to one of the bolts that holds the cover on the transmission. Or, fasten one end of the cable to a front frame rail in one of the holes provided for the engine splash pans and the other end to one of the engine pan bolts.

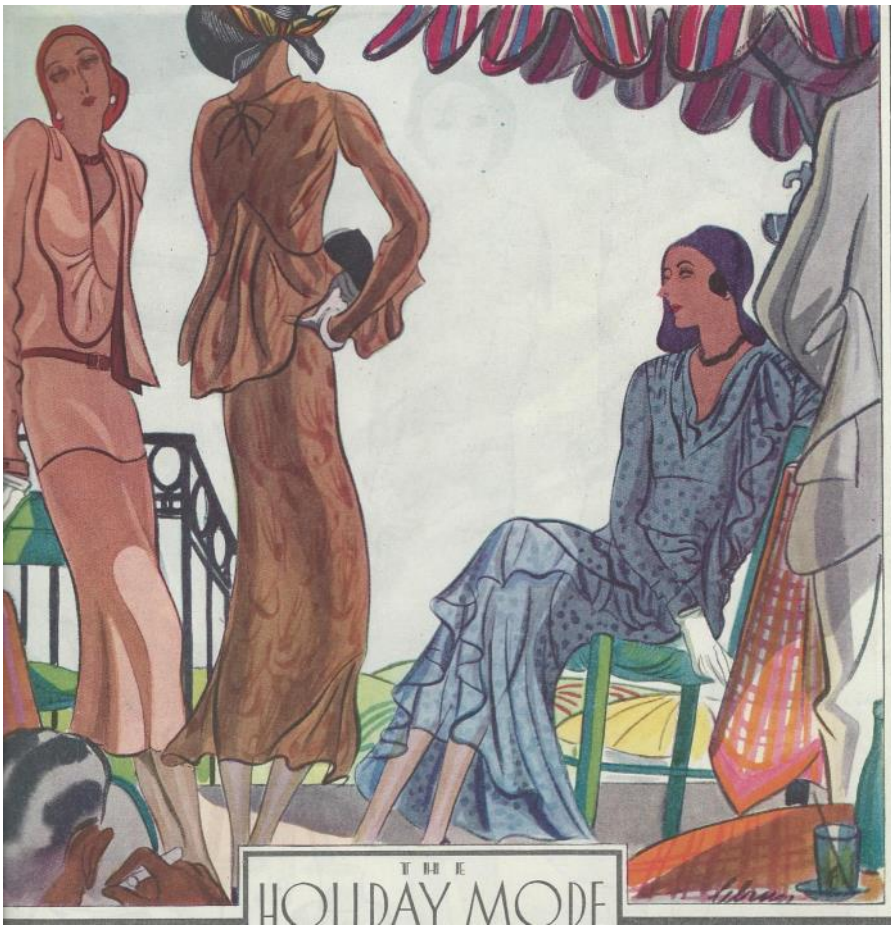
If you have had problems with generator or alternator failure this is an easy and inexpensive supplement to your ground system and you can rest assured that your ground circuit integrity will always be secure. RG

WICHITA A'S 2015 TOUR & EVENT SCHEDULE

DATE	TOUR OR EVENT	PERSON IN CHARGE
June 8-12	Regional: "A's in NW MO" / St Joseph, MO	NW Missouri Model A Ford Club
June 14	All Wheels Day/ Lake Afton	J Clark
July 4	Derby Parade & Picnic	Hilemans / Sharps
July 11	Automobilia Moonlight Car Show	
August ????	Waterville, Blue Rapids, and Marysville, KS	Adams / Ludlows
September 20	Ice Cream Social	Ludlows
September 26	International Model A Ford Day	Grabendikes
October 4	All Ford Day	J Clark
October ????	Men's Tour	Ruggles
November 7	Mennonite Thanksgiving Dinner / Yoder	Waller
December ????	Ladies Christmas Luncheon	C Ellerman / D Ruggles
December ????	Club Christmas Party	????

ERA FASHIONS

THE HOLIDAY MODE



6195. A scarf collar lends flattering lines.

6168. A soft flounce suggests a bolero.

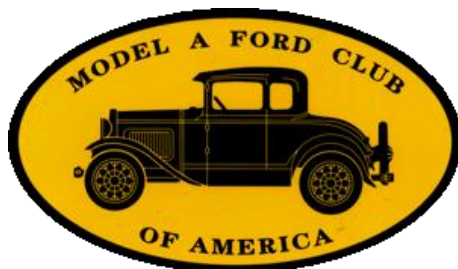
6162. The new neckline is draped in front.

6195 6168

3162

Copied from July 1930 issue of McCall's Magazine

NATIONAL MODEL A CLUBS



MAFCA

250 S. Cypress St.
La Habra, CA 90631-5515
www.mafca.com
U.S. Membership Cost: \$40

The Wichita A's Model A Ford Club encourages members to join both National MARC and MAFCA Clubs.



MARC

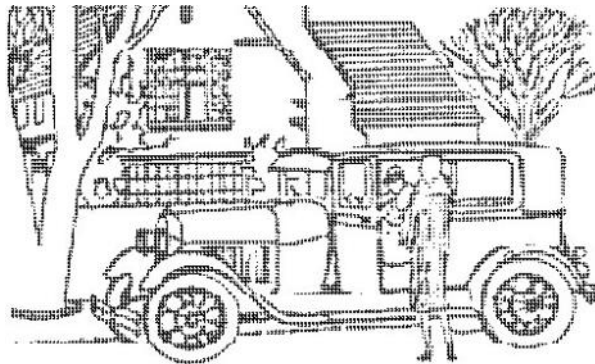
6721 Merriman
Garden City, MI 48315
<http://modelarestorers.org>
U.S. Membership Cost: \$40

← For membership information you can check MAFCA and MARC web sites. →

LOCAL AND NATIONAL CALENDARS

2015 –2016 SWAP MEET SCHEDULE

June 4-6, 2015.....	Kansas City Swap Meet, Kansas Speedway, 400 Speedway Blvd.....Kansas City, KS
June 16-20, 2015.....	Petit Jean Swap Meet.....Petit Jean, AR
June 27-28, 2015.....	Swap Meet Fremont.....Fremont, NE
July 9-12, 2015.....	Iola Old Car Show & Swap Meet.....Iola, WI
October 7-10, 2015.....	Hershey Region AACA Swap Meet.....Hershey, PA
October 15-17, 2015...	Chickasha Swap Meet.....Chickasha, OK
October 24-25, 2015...	16th Annual Swap Meet by Sedgwick Street Rodders.....Hutchinson, KS
February 5-6, 2016.....	2016 Kansas Sunflower for Charity Swap Meet at KS Pavilions.....Park City, KS



2014 - 2017 FUTURE REGIONAL & NATIONAL MODEL A MEETS

June 7-12, 2015.....	MAFCA National Tour.....Lobsters & Lighthouses of Maine
June 8-12, 2015.....	Central Midwest Regional Meet.....St. Joseph, MO
June 21-26, 2015.....	Canadian MARC National Meet.....Niagara Falls
December 2-5, 2015.....	MAFCA National Awards Banquet.....Medford, OR
June 19-24, 2016.....	2016 MAFCA National Convention.....Loveland, CO
June 25 - July 1, 2016.....	MARC National Meet - Sweet Sixteen Region.....Perrysburg, OH
September 19-22, 2016.....	MARC National Tour Hudson Valley Region.....Newburgh, NY
2016.....	MARC Membership Meet.....Open
June 5-9, 2017.....	Omaha Regional Meet.....Omaha, NE
September 10-17, 2017	MAFCA National Tour - Pacific Northwest Tour.....Lions Gate Model A Club



New and Used Antique Parts

MILT'S MODEL 'A' REPAIR, PARTS & SALES
F.S. Modern Ignitions • Mitchell Overdrive
Overdrive & 4-Speed Transmissions Installed

806 W South Avenue S
Blue Springs, MO 64015
hesfrt@sbcglobal.net

BRASSWORKS
Aries Mufflers

Milton Hessefort
816-229-1949
Cell 816-590-4317

Powder Coating Services

A Division Of

LORAC COMPANY

"FOR A DURABLE OVEN-CURED FINISH"

Motorcycle & Auto • Lawn Furniture • Hobbyist
Manufacturers • Aviation • Agriculture • Many Others

Sandblasting Facilities

316-263-2565 • 800-554-0144 • Fax 316-263-5181

MITCH HERRING

COATINGS MANAGER

624 E. Harry
Wichita, KS 67211-4205

McCurdy
AUCTION LLC

REAL ESTATE SPECIALISTS

12041 E. 13th - Wichita, KS - 67206 • 316.683.0612

visit us at McCurdyAuction.com

CENTRAL—MIDWEST MEET

June 8-12, 2015

St Joseph, MO

June 8-12, 2015

Host: Northwest Missouri
Model A Ford Club



RAY HARSHFIELD

Office: (316) 942-1925

Fax: (316) 943-1311

Cell: (316) 305-1705

www.wichitagoldkey.com

GOLD KEY

REALTORS®

3535 W. 13th
Wichita, KS 67203



1 DAY REPAIR
Don Grabendike
30 years experience!
Ph: 838-1765
License #2763

ELLERMAN SPEEDOMETERS

STEWART-WARNER FOR
FORD MODEL A
OVAL OR ROUND
RESTORATION



DENNIS ELLERMAN
316.722.2107 OR
316.765.1506

ELLERMAN SPEEDOMETERS@COX.NET

The Model "A" Medic LLC

New and Used Model A Ford Parts.

Specializing in Full Service Repairs & Restorations.

Free Parts Delivery to Local Events and Monthly
Club Meetings!!!!

If you are looking for a Insured, Professional Shop to do your
Model A Restoration, The Model A Medic is the place!

Eric Weninger 2045 S Bedford St., Wichita, KS 67207

(316) 619-1821 Monday - Friday 9am - 6pm CST

www.modelamedic.com

Clarence Howland

1911 Briarcliff
Emporia, Kansas 66801

BUY - SELL - TRADE
Antique Cars and Parts

Cell: (620) 341-3533
Home: (620) 342-0215



MARC NATIONAL MEET

June 21-26, 2015

Niagara Falls, Ontario, Canada

Host: Canadian MARC



**WALLACE W. WADE
SPECIALTY TIRES**

530 Regal Row
Dallas, Texas 75247
(214) 688-0091
Fax (214) 634-8465
1.800.666.TYRE

www.wallacewade.com
wallacewade@earthlink.net

SPECIALTY TIRE DISTRIBUTOR

"IF WE DON'T HAVE IT — WE'LL GET IT"

Vintage Tires

ANTIQUE & CLASSIC
CARS - TRUCKS
MILITARY - TRACTORS

WALLACE W. WADE

1 800 666 TYRE

We've got your
COLLECTOR CAR COVERED

JAMES & JUDI SHARP
1721 E OSAGE, SUITE 100
DERBY, KS 67037
(316) 788 5257

Fueled by:



Collector Car Insurance

B&B Electric Motor Co.

Your One Stop Industrial Service Center

New • Repair • Rewind

Electric Motors • Pumps

Phone (316) 267-1238 • 1-800 499-1238

Fax (316) 267-0599 • Emergency (316) 641-0806

email: bbemc@msn.com • bbelectricmotor.com

332 Lulu
Wichita, KS 67211

Ed Giesen
Customer Service

Z Model A Parts - Zanes

Ron and Sondra Kester, Owners

773 Central Street

Glade, Kansas 67639

Phone: 785-543-6729

Fax: 785-543-3013

e-mail: 2officegirls@ruraltel.net

JIM'S MODEL "A"

Starter & Generator Repair

Specializing in 12 Volt Starters

10405 W. Bartlett St, Wichita, KS 67212
(316) 943-7033

**MAFCA NATIONAL
CONVENTION**

July 19-24, 2016

Loveland, CO

Host: Model A Ford
Club of Colorado

MARC NATIONAL MEET

June 25-July 1, 2016

Perrysburg, OH

Sweet Sixteen Region

Wichita A's Club Meeting

Minisa Park, 704 W. 13th. N

Meeting Starts 7:00 PM

4th Monday of each month except
the month of May.

No Meeting in December

Wichita A's Model A Ford Club
P.O. Box 25
Wichita, KS 67201



Address Service Requested

Wichita A's Model A Ford Club Contacts

President, Dennis Ellerman

president@wichitaas.com.....

Vice President, Randy Frazer

vicepresident@wichitaas.com....

Secretary, Joanna Adams

secretary@wichitaas.com.....

Treasurer, Rex Kraus

treasurer@wichitaas.com.....

Tour Chairman, Don Grabendike

tourchair@wichitaas.com.....

Membership, Susan Stone

membership@wichitaas.com.....

Newsletter Editor, Linda Kibbe

editor@wichitaas.com.....

Webmaster, Darren Schuster

webmaster@wichitaas.com

The Rumbleseat Review is the official publication of the Wichita A's Model A Ford Club, Inc., a local chapter of the Model A Ford Club of America and the Model A Restorers Club. It's purpose is to keep members informed of past, present and future events, activities, and club news. In addition, this newsletter includes articles and other information to aid in the restoration and enjoyment of the Model A Ford automobile.

This publication is mailed or emailed to members, prospective members and editors of similar publications prior to monthly meetings. Meetings are usually the fourth Monday of the month. Members may publish antique car related ads only for free of charge which includes items wanted, items for sale, or items for trade. We invite members to submit articles containing technical Model A information and other interesting tidbits for publication in this newsletter. Items to be published must be submitted to the newsletter editor by deadline shown in the calendar. Wichita A's membership dues are \$25.00, per year (October to September 30). MAFCA dues are \$40.00 per year and MARC dues are \$40.00 per year. A business card advertisement in this newsletter is \$25.00 per year.