



Rumbleseat Review



www.wichitaas.com

WICHITA A'S MODEL A FORD CLUB

Volume 35 Issue 5&6

P.O. Box 25, Wichita, KS

May & June 2020

June 2020

S	M	T	W	TH	F	S
	1	2	3	4	5	6
7	8	9	10	11	12	13
14	15	16	17	18	19	20
21	22	23	24	25	26	27
28	29	30				

July 2020

S	M	T	W	TH	F	S
			1	2	3	4
5	6	7	8	9	10	11
12	13	14	15	16	17	18
19	20	21	22	23	24	25
26	27	28	29	30	31	

August 2020

S	M	T	W	TH	F	S
						1
2	3	4	5	6	7	8
9	10	11	12	13	14	15
16	17	18	19	20	21	22
23	24	25	26	27	28	29
30	31					

No meeting in June

So no refreshments

CLUB TOURS & MEETING SCHEDULE

June 2020



- 13..... Flag Day Weekend Tour.....James
14..... All Wheels Day **CANCELED**.....

July 2020



- 4..... Derby 4th of July Parade.....Sharp/Hileman
10..... Newsletter Deadline...editor@wichitaas.com.....Sheila Orr
11..... Automobilia.....4PM Downtown.....Wichita
27..... Club Meeting at Minisa Park 704 W. 13th.....7:00PM

August 2020



- 7..... Newsletter Deadline...editor@wichitaas.com.....Sheila Orr
15..... Old Settlers Parade-Mulvane.....Eyres
24..... Club Meeting at Minisa Park 704 W. 13th.....7:00PM

WHAT'S INSIDE

Calendar	1
Meeting Minutes	2
Announcements	2&3
Tours	4
National & Regional	5& 6
Model a Body Styles	7
Tech Talk	8
ERA Fashion	9
Swap Meet/ Nat'l Schedule	10

The Wichita A's meet on the 4th Monday of the month except December. We do not hold a meeting during the month of December. Other meeting changes will be published in the newsletter prior to the scheduled meeting. The meetings are held at Minisa Park, 704 W. 13th, Wichita, KS. Meeting time is 7:00 PM unless otherwise noted in the newsletter.

PRESIDENTS MESSAGE

I hope all are doing well and coping with our ever changing world. If it isn't the Covid-19, it's protesting, always something to watch out for. We did have an impromptu meeting of our Board members in my drive the first of June to discuss the reinitiating of our monthly meetings and also how we could do some shorter days trips and keep everyone's safety in mind. We will start our monthly meetings in July, with extra care in sanitizing & social distancing. We will not be having drinks and snacks for everyone (to ensure the least amount of germ spreading). We will continue in this safe manner until we feel good about our area's improving trend in the spread of the virus. We don't want anyone to fall ill from the environment of our meetings. We would like to request the use of masks and please utilize social distancing as a precautionary approach.

We are also going to start having some short "day trips". E-mails will be sent out when we have one planned, but please be cautious and respect those that want to attend but also want to maintain social distancing.

There is no meeting or tour that important to put our membership in jeopardy of contracting the virus. So please come and enjoy yourself but also remember to protect others.

Alan Orr
President

EDITOR'S CORNER



Wow! What an interesting time we have been through with the Covid -19! Your board has been trying to figure out what to do with meetings, functions and tours!! The main concern is keeping everyone safe. No meeting in June but planning on meeting July 27th if all keeps improving! Something to look forward to. I know everyone has different thoughts and concerns about the pandemic, but we must keep in mind EVERYONES safety. So if and when we get together respect your friends—wear a mask and practice your social distancing—if not for yourself, do it for everyone around you.. By the time you receive this, at least one short trip will be behind us. Again try to get out-keeping a 6 ft distance and enjoy the fresh air and seeing our friends once again. Remember, this to will pass!

More Announcements

Please keep **Lawrence & Lenette Kottas** in your thoughts & prayers. **Lawrence** has been in hospital and now rehab for pneumonia & surgery on his back. **Lawrence & Lenette** have been apart for quite some time. If you would like to send a card to them and help spread some cheer here are their addresses.

Lawrence Kottas

Lenette Kottas

Linda Boivin has been in either hospital or rehab for several months. Her family would like to ask for cards for Linda at this time.
Her address is

Bonita Graham has been in hospital for 3 days, but now home and doing well! **Joyce Guinty**, mother of **Scott Guinty**, is having heart surgery for a heart aneurysm. We wish them both a speedy recovery .

ANNOUNCEMENTS



June Birthday

3. Gil Adams
3. Rex Kraus
4. Tonya Jordon
4. Glenda Sill
13. Helen Louise Beaver
15. Mary Brashear
15. June Hall
17. Melanie Adams
17. Steve Blazer
18. Alan Orr
18. Barry Plunkett
19. Lenette Kottas
20. Trudee Harshfield
23. Diana Grube
24. Sheryl Wilson
27. Judi Sharp

July Birthdays

7. Don Short
10. Jean Burke
11. Richard Craft
11. Robert Harvey
11. Tom Ruggles
15. Ruth Grady
22. John Davis
22. Mike Wilson
25. Don Shearer
25. John Stone
26. Marc Wendt
28. JoAnn Bruce
28. Becky Price
28. Linda White
29. Francis Grady
30. Henry Ford

THANK YOU

Dear Wichita A family. Thank you for the donation to the Alzheimer's Association. Thanks also for the calls and cards. I was sorry that we were not able to have you drive your A's to the funeral. **Peggy** always enjoyed the tours and the fellowship.

Frank Chenoweth & family

Wichita A's-Thank you for all you did to help with my parents recent passing. They truly loved your club and all the fulfillment it brought their lives. Bless you all!

Gretchen Praeger Stroh-daughter of long time members **Otto & Ruth Anne Praeger**

NEW MEMBERS

Clarence & Carole Frazier

SYMPATHY

Condolences go out to the family of **Frank Chenoweth** in the passing of his wife, **Peggy**. **Frank and Peggy** are long time members of our club.



Condolences go out to **Dale Hellar** in the passing of his daughter, Paula Schroeder.



ADDRESS UPDATE

Newsletter Deadline

Friday, July 10, 2020
Sheila Orr
 editor@wichitaas.com or
 316-

Garry & Mary Brashear

Dick & Earlene Foote

BIG KANSAS ROAD TRIP

Big Kansas Road Trip has been moved to September



Because of COVID-19 circumstances, the **Big Kansas Road Trip** to Brown, Doniphan and Nemaha counties has been rescheduled for September 10-13. Numerous large local events and fall harvest narrowed the potential choices.

The original dates of May 7-10 fall within a time period of unknown safety status.

Most of the events scheduled for the original May 7-10 time period will still fall within a time period of unknown safety status.

The already-printed event guide will come out about six weeks prior to the event and though it will have incorrect dates, it will still show the planned events. A day program will be up-to-date and available at information centers during the event.

To confirm any other changes that may occur, check bigkansasroadtrip.com or the **BKRT Facebook page**.

It'll still be so much fun!

We'll be ready to see you all in Brown, Doniphan and Nemaha counties in the fall!

The **BKRT** is like a tri-county open house and the public is invited to create their own adventures over four days. The communities have been asked to be good at being themselves. Wonderful activities are planned for that goal.

Questions? Contact wendee@kansassampler.org.

History repeats itself. Came across this poem written in 1869, reprinted during 1919 Pandemic.

This is Timeless...

And people stayed at home
 And read books
 And listened
 And they rested
 And did exercises
 And made art and played
 And learned new ways of being
 And stopped and listened
 More deeply
 Someone meditated, someone prayed
 Someone met their shadow
 And people began to think differently
 And people healed
 And in the absence of people who
 Lived in ignorant ways
 Dangerous, meaningless and heartless,
 The earth also began to heal
 And when the danger ended and
 People found themselves
 They grieved for the dead
 And made new choices
 And dreamed of new visions
 And created new ways of living
 And completely healed the earth



Copied from the May 2020 Spark Plug submitted by Joe Stout

MAFFI Newsletter Minute May 2020

What's new at the Museum you might ask? Well, in spite of the mandatory closure due to Covid 19 the board of Trustees have been working hard behind the scenes in anticipation of the 10th Annual Model A Day, September 19, 2020. There have been new projects underway to make the museum more enjoyable. We are hoping to have the interactive Chassis up and running for Model A Day. A Vintage Post Card machine to go along with our Penny Machine will give you more ways to take home a souvenir of your day at the Museum. Recently some of our Trustees have been also working on a complete collection of Model A Jim Beam Bottles to have on display. Two new donations to the Museum are The America's Sweetheart (see article in the Restorer Mar/Apr 1998) and a Sears Tractor Conversion!

The response to the 2019 Model A Day Pins and the 20 Millionth Model A pins have been great. If you didn't get your order in, contact Suzan O'Neal (oneale31@gmail.com). She will be able to let you know what is still available.

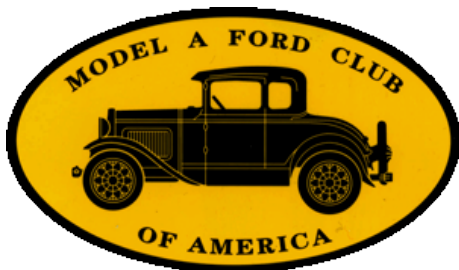
Make sure to get in your hotel reservations for Model A Day if you haven't done so. Our host hotel is the Four Points by Sheraton in Kalamazoo. Call them directly to get our Model A Day room rate. (269) 385-3922. DO NOT CALL THE SHERATON 800 NUMBER! There are other hotels in the vicinity as well if the Four Points is sold out and also RV and camping areas.

Thank you for your continued support of MAFFI through your membership and donations!

Thank you,
Marsha Quesnel, MAFFI Trustee



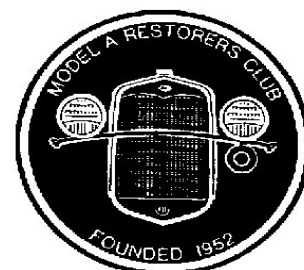
National Model A Clubs



MAFCA

250 S. Cypress St.
La Habra, CA 90631-5515
www.mafca.com
U.S. Membership Cost: \$50

The Wichita A's Model A
Ford Club encourages
members to join both
National MARC and
MAFCA Clubs.



MARC

6721 Merriman
Garden City, MI 48315
<http://modelarestorers.org>
U.S. Membership Cost: \$45

For membership information you can
check MAFCA and MARC web sites.

MAFFI Newsletter Minute June 2020

MAFFI Newsletter Minute June 2020

Model A Day at The Gilmore is planned for September 18-19. Our theme this year is “Model A First Responders”. We plan to have police vehicles, fire trucks and a Model A ambulance on exhibit as part of our event. We also plan to have our swap meet as well as technical and fashion seminars.

The MAFFI Trustees have been working with The Gilmore staff to assure that the museums and grounds at The Gilmore are as safe as possible to prevent the spread of Covid-19. The Gilmore will assure that procedures will be in place in accordance with Federal and CDC guidelines and Michigan safety and health regulations. There will be changes required to be in compliance with health regulations. Restrictions in gatherings of crowds will require a change in how we conduct seminars. Masks will be required of Gilmore employees and food service will be changed so that food orders are delivered to visitors after orders are taken. Our interactive displays will not be available for use this year. I’m sure other changes will be required pertaining to screening, physical distancing, PPE (personal protective equipment) and limitations in capacity. As stated by The Gilmore and fully supported by MAFFI, “Protecting the health and safety of employees and visitors is our highest calling”. So, we will have to be flexible and adapt to the changes needed to support having a great event this year.

Since Model A Day attendees do not register for the event in advance, we don’t have an ability to communicate with attendees through e-mail addresses. To keep everyone informed, we will communicate updates, as they occur, through our website, (www.maffi.org), The Gilmore website (gilmorecarmuseum.org) and our national club Facebook pages. Please use these communication tools to learn more about Model A Day this year at The Gilmore. Also, I encourage you to contact me or any MAFFI Trustee with your questions or concerns.

Sincerely,

John Begg, President

MAFFI

Ad Translations

- **Good Paint:** paint is thin, cracked and faded
- **All original:** needs restoration
- **Barn Find:** parts car
- **Restorations started:** disassembled 20 years ago
- **95% Complete:** hood, steering column, seats missing
- **Was Running When Parked:** engine seized
- **Needs TLC:** not running
- **Some Rust:** floors & trunk gone
- **California Car:** was in California at some point
- **Low Miles:** odometer is anyone’s guess
- **Runs Good:** may not stop
- **Needs Completion:** fix what was done before you can restore
- **Easy Restoration:** for someone with \$\$\$
- **Mint:** mint air freshener inside

Copied from the Spark Plug May 2020

MODEL A BODY STYLES

Model A Body Styles

- Courtesy of Naper A's

Model	1927	1928	1929	1930	1931	Total
SPORT COUPE	734	79,099	134,292	69,167	19,700	302,992
TRUCK	286	63,229	156,433	159,341	103,561	482,850
COMMERCIAL CHASSIS	99	42,612	130,608	56,707	34,959	264,986
STANDARD PHAETON	221	47,255	49,818	16,479	4,076	117,849
DELUXE PHAETON	-	-	-	3,946	2,229	6,175
STANDARD ROADSTER	269	81,937	191,529	112,901	5,499	392,135
DELUXE ROADSTER	-	-	-	11,318	52,997	64,315
STANDARD COUPE	629	70,784	178,982	226,027	79,816	556,238
DELUXE COUPE	-	-	-	28,937	23,067	52,004
STANDARD TUDOR	1,948	208,562	523,922	376,271	148,425	1,259,128
DELUXE TUDOR	-	-	-	-	21,984	21,984
TOWN CAR	-	89	913	63	-	1,065
STATION WAGON	-	5	4,954	3,510	2,848	11,317
TAXICAB	-	264	4,576	10	-	4,850
STANDARD FORDOR (2 window)	-	82,349	146,097	5,279	-	233,725
DELUXE FORDOR (2 window)	-	-	-	12,854	3,251	16,105
BUSINESS COUPE (2 window)	-	37,343	37,644	-	-	74,987
STANDARD FORDOR (3 window)	-	-	53,941	41,133	18,127	113,201
FORDOR TOWN SEDAN (3 window)	-	-	84,970	104,935	55,469	245,374
CABRIOLET CONVERTIBLE	-	-	16,421	25,868	11,801	54,090
VICTORIA	-	-	-	6,306	33,906	40,212
SEDAN CONVERTIBLE	-	-	-	-	4,864	4,864
Yearly Totals	4,186	713,528	1,715,100	1,261,053	626,579	4,320,446

- found in *The Distributor*, Orange County A's newsletter -

Glad I didn't waste my money buying a planner for 2020!

They say we learn from our mistakes. That's why I'm deliberately making as many as possible. Soon I'll be a genius!

Tech Talk

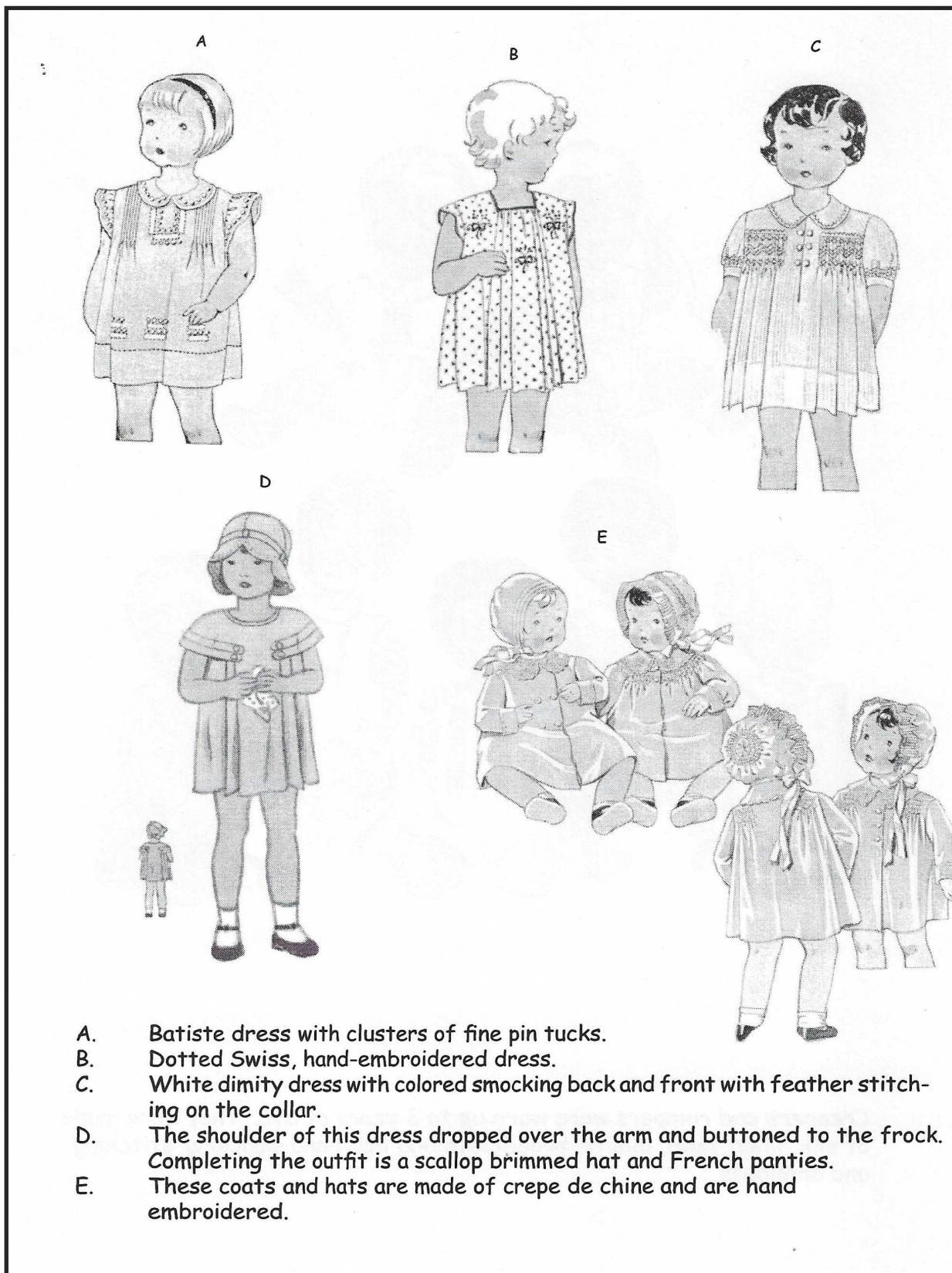
MODEL A SAFETY TIPS

Model A Safety Tips

1. To Jack up a Model A, apply the Emergency Brake and place the transmission in Low or Reverse Gear. Never use a Bumper Jack or the original Model A one to jack the car as they are very unsafe. If you use a Hydraulic Bottle Jack, Weld a U shaped metal Bracket to the Pad on top to go under the front or rear Axle. This keeps the Jack from slipping out and causing the car to fall. When you weld the Bracket to the Jack, extend the Ram all the way so the heat will not damage the seal in the base.
2. If your Starter quits, or the Battery is low, you can push the car or hand crank it. First put the Emergency Brake on, put the Transmission in Neutral, place the Ignition Switch ON, Be sure that the Spark Lever is all the way up, (fully retarded so it will not kickback). Next advance the hand throttle a little and open up the Mixture control on the Choke Rod about one half turn. If you are by yourself, run a piece of solid Wire from the little hole in the bottom of the Carburetor Choke Arm and route it forward under the Radiator Shell. Make a loop in the end to pull on. (if the car is already hot you probably won't have to Choke it). Without the wire you could have a assistant Choke from the Cab. When Cranking, cup your hand under the Crank for a Upstroke, "Do Not Wrap Your Thumb Around the Crank." Pull upward vigorously while Choking, if the car does kickback it will not injure you. It may require a number of attempt's to start the engine.
3. Never run a original two bladed fan as they are notorious for breaking while the engine is running. (A Modern Aluminum Fan is a good replacement.) If it break's it can ruin your Radiator, Hood or Water Pump. "Never stand next to any running Fan with the Hood up or you could be impaled by a flying Blade".
4. If your Car has any of the original Plate Glass Windows in it, replace it with Safety glass, a crash could kill or hurt you badly.
5. Install Seat Belts, the first thing that happens in a Crash or Rollover with a Model A is, the Doors fly open, you fall out and the Car roles over you. "NOT GOOD".
6. Finally, "Do not remove the Fire Suppressor from the Gas Tank Filler. "This is not a filter", it is in place to prevent Static Electricity from igniting the Gasoline. A Static charge can come from your clothes sliding across the seat or, when the Gas Pump Nozzle contacts the tank filler. It is recommended that you ground yourself to the Pump and Car before fueling. A good place to touch is Chrome or bare metal on the Pump and the Car.
7. When traveling on a Tour or at night, it is best to have a Yellow flashing Safety Light on the rear of the Car. Harbor Freight sells one with Battery's and a Magnet for attachment. It my keep you from being rear ended while driving slow.

Jim Broadhead

ERA FASHION



LOCAL AND NATIONAL CALENDARS

2020 SWAP MEET & CAR SHOW SCHEDULE



June 16-20, 2020.....	Petit Jean Swap Meet CANCELEDPetit Jean, AR
July 9-11, 2020.....	Iola Old Car Show & Swap Meet..... CANCELEDIola, WI
August 21-23, 2020.....	Ozarks Antique Auto Club Swap Meet.-Ozark Empire FairgroundsSpringfield MO.
October 7-10, 2020.....	Hershey Region AACA Swap Meet..... CANCELEDHershey, PA
October 14-17, 2020.....	Chickasha Fall Swap Meet...Grady Co. Fairgrounds.....Chickasha, OK
October 23-25, 2020.....	Sedgwick Street Rodders 21st Annual Swap Meet.....Hutchinson, KS



2020-2021 FUTURE REGIONAL & NATIONAL MODEL A MEETS

December 3-6, 2020.....	National Awards Banquet MAFCA.....Ft. Worth, TX
April 9-11, 2021.....	MARC Membership Meet-Script A Region.....Bay City, MI
June 20-24, 2021.....	MAFCA National Tour.....North Conway, NH
August 2-6, 2021.....	MARC National Meet Nickel A Region.....Charlottesville, VA

ERIC WENINGER
OWNER

2045 S BEDFORD ST
WICHITA, KS 67207

316-619-1821 CELL
316-685-2553 SHOP

info@modelamedic.com

www.modelamedic.com

www.facebook.com/modelamedic

**THE
MODEL A
MEDIC LLC**



NEW AND USED MODEL A FORD PARTS

SPECIALIZING IN FULL SERVICE REPAIRS
AND RESTORATION

ELLERMAN SPEEDOMETERS



STEWART-WARNER FOR
FORD MODEL A
OVAL OR ROUND
RESTORATION



DENNIS ELLERMAN
316.722.2107 OR
316.765.1506

ELLERMANSPEEDOMETERS@COX.NET

B&B Electric Motor Co.

Your One Stop Industrial Service Center

**New • Repair • Rewind
Electric Motors • Pumps**

Phone (316) 267-1238 • 1-800 499-1238

Fax (316) 267-0599 • Emergency (316) 641-0806

email: bbemc@msn.com • bbelectricmotor.com

332 Lulu

Wichita, KS 67211

Ed Giesen

Customer Service



REAL ESTATE SERVICES

RAY HARSHFIELD

Realtor

ADDRESS

1356 N Emporia St

Wichita, KS 67214

CELL: 316-305-1705

OFFICE: 316-260-2674

FAX: 316-260-9902

ray.harshfield@cosh.us

A-Z Model A Parts - Zanes

Ron and Sondra Kester, Owners

773 Central Street

Glade, Kansas 67639

Phone: 785-543-6729

Fax: 785-543-3013

e-mail: ron@ronsrestoration.com

Mishelle Whitney

mishelle@loraccompany.com

624 E. Harry Street

Wichita, KS 67211

316-263-2565 * 1-800-554-0144

Fax 316-263-5181

www.loraccompany.com

Lorac Company, Inc.

Basement Window Well Cover * Powder Coating

*** Custom Metal Fab * Media Blasting**

Wichita A's Model A Ford Club
P.O. Box 25
Wichita, KS 67201



Address Service Requested

Wichita A's Model A Ford Club Contacts

President, Alan Orr

president@wichitaas.com..... (316)

573-8727**Vice President**, Linda Kibbe

vicepresident@wichitaas.com.....(316)

Secretary, Judy Sharp

secretary@wichitaas.com.....(316)

Treasurer, Claudia Ellerman

treasurer@wichitaas.com..... (316)

Tour Chairman, Don Grabendike

.....(316)

Membership, Susan Stone

membership@wichitaas.com.....(316)

Newsletter Editor, Sheila Orr

editor@wichitaas.com.....(316)

Webmaster, Darren Schuster

webmaster@wichitaas.com

The Rumbleseat Review is the official publication of the Wichita A's Model A Ford Club, Inc., a local chapter of the Model A Ford Club of America and the Model A Restorers Club. It's purpose is to keep members informed of past, present and future events, activities, and club news. In addition, this newsletter includes articles and other information to aid in the restoration and enjoyment of the Model A Ford automobile.

This publication is mailed or emailed to members, prospective members and editors of similar publications prior to monthly meetings. Meetings are usually the fourth Monday of the month. Members may publish antique car related ads only for free of charge which includes items wanted, items for sale, or items for trade. We invite members to submit articles containing technical Model A information and other interesting tidbits for publication in this newsletter. Items to be published must be submitted to the newsletter editor by deadline shown in the calendar. Wichita A's membership dues are \$25.00, per year (October to September 30). MAFCA dues are \$50.00 per year and MARC dues are \$45.00 per year. A business card advertisement in this newsletter is \$25.00 per year.