



Rumbleseat Review



www.wichitaas.com

WICHITA A'S MODEL A FORD CLUB

Volume 36 Issue 2

P.O. Box 25, Wichita, KS

February 2021

February 2021

S	M	T	W	TH	F	S
	1		3	4	5	6
7	8	9	10	11	12	13
	15	16	17	18	19	20
21	22	23	24	25	26	27
28						

March 2021

S	M	T	W	TH	F	S
	1	2	3	4	5	6
7	8	9	10	11	12	13
14	15	16		18	19	20
21	22	23	24	25	26	27
28	29	30	31			

April 2021

S	M	T	W	TH	F	S
				1	2	3
	5	6	7	8	9	10
11	12	13	14	15	16	17
18	19	20	21	22	23	24
25	26	27	28	29	30	

**SORRY
NO
MEETING
SO NO
REFRESHMENTS**

CLUB TOURS & MEETING SCHEDULE

February 2021



5..... Newsletter Deadline...editor@wichitaas.comSheila Orr

22..... Club Meeting at Minisa Park is **CANCELED**7:00 PM

March 2021



5..... Newsletter Deadline...editor@wichitaas.comSheila Orr

22..... Club Meeting at Minisa Park is **CANCELED**7:00PM

April 2021



9..... Newsletter Deadline...editor@wichitaas.comSheila Orr

26..... Club Meeting at Minisa Park 704 W. 13th.....7:00PM

WHAT'S INSIDE

Calendar	1
Meeting Minutes	2
Announcements	3
Trivia	4
This and That	5
National & Regional	6&7
Tech Talk	8
ERA Fashion	9
Swap Meet/ Nat'l Schedule	10



The Wichita A's meet on the 4th Monday of the month except December. We do not hold a meeting during the month of December. Other meeting changes will be published in the newsletter prior to the scheduled meeting. The meetings are held at Minisa Park, 704 W. 13th, Wichita, KS. Meeting time is 7:00 PM unless otherwise noted in the newsletter.

PRESIDENTS MESSAGE

As we approach a new month, we are now seeing some positive notes in our lives! Many members have, or are in process of getting vaccinated for the Corona Virus. Our country's Positive test rate is going down and we are starting to turn the corner on the Pandemic. We still need to keep our guard up and continue to fight the virus.

With this being said, we can hope to start gathering again in the upcoming months. I think it will be some time before it is "Life as it used to be", but we will adapt. We will continue to be cautious in our daily activities, but will start to resume some of the activities that we need and miss in our lives.

Be Safe, and will see all of you soon.

Alan Orr
President

EDITOR'S CORNER



© Can Stock Photo - csp14000280

Hello everyone! This editor will be happy when activities start to resume so I have something to write about except masks and sanitizer!! Looking forward to Spring and warmer weather. As I write this, it is 12 degrees!!! I do see that some of our national events are still scheduled and happening-so hopefully, we can start to think ahead to warmer weather and some tours. Get your shot and stay safe so we can all get back together soon!!

Sheila Orr



Due to Covid it has been decided by your board not to have any meetings in the first quarter of 2021

TRIVIA QUESTIONS?????

1.What was the first official White House car?

2.What was the city to use first parking meters?

3. Where was the first drive in movie opened and when?

4..Where was the first drive-in restaurant and when?

5.What was the only car to appear simultaneously on the covers of Time and Newsweek?

6. Where were the first three colored traffic lights in the world installed ?

7. What was the lowest priced mass produced American car?

Answers on Page 4

ANNOUNCEMENTS



March Birthdays

1. Frank Chenoweth
- 1 Jim Nungesser
2. Dale Havercroft
3. Carolyn Nungesser
4. JoAnn Tackett
10. Gary Cox
12. Roger Moran
14. John Kurtz
14. Wayne Orr
15. Jerry Allen
16. Arley Bennett
16. Dave Moore
19. Cheri Blazer
19. Doris Jean Ludlow
21. Roger Graham
25. R.B. Flynn
26. Lana Waite
28. Bunny Broeckelman
28. Bob Broeckelman
28. Amy Dreiling
29. Earlene Foote
31. Don Arnold
31. Richard Ashford

THANK YOU

The family of Grace Brooks, longtime member, wish to express their Thanks for the many cards, flowers and thoughts during the passing of Grace.

FOR SALE

One Model A Ford combine engine complete with radiator and stand. \$50.00.

Call: **Don Grabendike**



SYMPATHYS

Our condolences go out to **Dale Havercroft** and family in the death of his spouse, **Morene**. **Morene** had a four year battle with cancer.



Condolences go out to **Mary Brashear**, and **Lance and Paulina Brashear**, in the death of **Garry Brashear**. **Garry** and **Mary** are longtime members of the Wichita A's.

Newsletter Deadline

Friday, March 5, 2021
Sheila Orr
 editor@wichitaas.com or
 316-

NEW MEMBERS

Robert & Loa Hagelgantz
 28' Roadster '29 Phaeton

Michael Knapp

PH: '30 Coupe
 (former member Darrell Knapp's A)

TRIVIA ANSWERS!

1. 1909 White Steamer ordered by President Taft.



2. Oklahoma City, OK on July 16, 1935.



4. Royce Hailey's Pig Stand opened in Dallas, Texas in 1921.

3. Camden, New Jersey in 1933.



6. In Detroit, Michigan in 1919. Two years later they experimented with synchronized lights.

5. The Mustang!



7. 1925 Ford Model T Runabout sold for \$260 which was \$5 less than the 1924.

KEEPER OF THE PLAINS

In keeping with Covid 19 protocol (don't go nowhere during pandemic) we have an opportunity to relive a past tour through the magic of videography. Chris Frank, a videographer journalist with KPTS, advised that the Wichita A's September 2020 socially distanced, Keeper of the Plains was broadcast last Friday (January 15, 2021). The show aired on KPTS segment "Positively Kansas" and is about 25 minutes in length. You can access the tour on a smart phone, smart TV or through a computer by going to one of the following sites:

https://youtu.be/xgPsY_CNmuw

Google: *youtube kpts* episode 803

Enjoy the ride and thanks for the memories.

Ahooga on

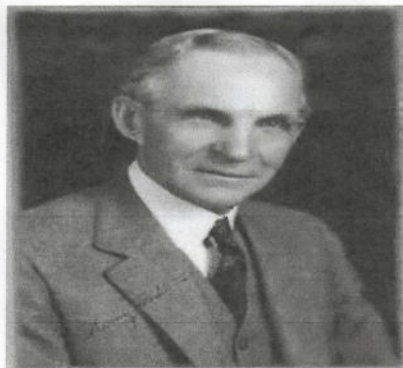
Kathy & Mike James



HENRY FORD

Henry Ford is well known for his Model T and Model A automobiles.

But...Did You Know???



- When he was a young man, Henry Ford repaired watches for his friends and family—and he made his own tools to do it. He used a filed shingle nail as a screwdriver and a corset stay as tweezers.
- In 1918, President Woodrow Wilson convinced Ford to run for a seat on the Senate as a Democrat. Ford obliged, but said, "If they want to elect me let them do so, but I won't make a penny's investment." He didn't spend a cent campaigning and still only lost by 4500 votes!
- Ford discovered by using wood scraps from his plants, he could make charcoal briquettes. When Ford's brother-in-law E.G. Kingsford brokered the site selection for Ford's charcoal manufacturing plant, Ford named the company Kingsford Charcoal in his honor.
- Among many, many other innovations Henry Ford brought to his manufacturing plants was a willingness to hire handicapped people, including the blind, deaf and those who had lost limbs in combat or in accidents. By 1919, more than 20 percent of Ford Motor Company's work-

force had some form of disability.

- Henry Ford was America's second billionaire, after oil magnate John D Rockefeller.
- During World War I, Ford took to the skies when he founded the Ford Airplane Company. While the company didn't achieve the success Ford had hoped, it did create the sturdy and now-iconic Ford Tri-Motor airplane, which was produced between 1928 and 1933. A Ford Tri-Motor even appears in "Indiana Jones and the Temple of Doom."
- Ford designed and built his first operational steam engine in 1878, when he was only 15 years old!
- Rare for his time, Ford was deeply opposed to cigarette smoking. Ford even published a book which detailed all the health concerns with smoking.
- Ford had a dislike for experts. He once wrote "If I ever wanted to kill opposition by unfair means, I would endow the opposition with experts." This meant that Ford Motor Company didn't employ anyone with "advanced engineering or design engineering skills." The company didn't even have a proving grounds for their cars — they tested them on public roads!

Thanks to Nancy Hanshaw for gathering these interesting facts about Henry!

Some Interesting Predictions: In the next 10 to 20 years:

1. Auto repair shops will disappear
2. A gas/diesel engine has 20,000 individual parts...An electrical motor has 20...Electric cars are sold with lifetime guarantees and are repaired only by dealers...It takes only 10 minutes to remove and replace an electric motor
3. Faulty electric motors are not repaired in the dealership but are sent to a regional repair so that repairs them with robots
4. Gas stations will go away
5. "Coastal industries" will go away
6. Homes will produce and store more electrical energy during the day than they use
7. A baby of today will only see "personal cars" in museums. The FUTURE is approaching faster than most of us can even handle...

MAFFI Newsletter Minute January 2021

Happy New Year from the Model A Ford Foundation! We are looking forward, as many of you are also, to a better and more active year. Hopefully you have been able to get in your A's and do some driving before the weather makes it impossible. Many clubs have had some "No Contact Tours" which have been nice. We live in a beautiful world and there is no better way to see it than from a Model A!

Last year the Museum had to say goodbye to a beautifully restored Woody belonging to Tim Wiggins that had been on loan to the Museum for several years. As luck would have it, a 1931 Woody has been donated to the museum by Rob Gibby from Pennsylvania. Rob has owned this car since 1963 while he was in school. We hope to have it safely installed in the Museum by February.

Did you know that you can get a tour of the museum right from the comfort of your own home? Go to our website: www.maffi.org and click on the link "Tours". There is a tour that was filmed in September, led by MAFFI President, John Begg and others. It was focusing on the First Responders Display but also gives you an idea of what's inside. You truly have to see it in person to appreciate all that is there. You could spend an entire day if you looked at every exhibit and read everything. We hope to have other short videos coming soon so check back often.

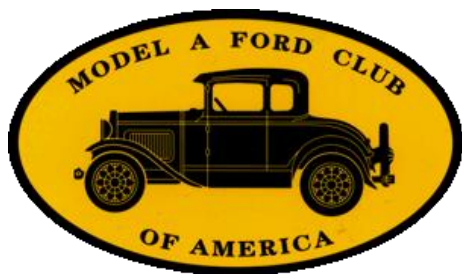
Thank you for your continued support of the Model A Ford Foundation through your membership and your donations.

Thank you,

Marsha Quesnel, MAFFI Trustee



National Model A Clubs



MAFCA

250 S. Cypress St.
La Habra, CA 90631-5515
www.mafca.com
U.S. Membership Cost: \$50

The Wichita A's Model A
Ford Club encourages
members to join both
National MARC and
MAFCA Clubs.

For membership information you can
check MAFCA and MARC web sites.



MARC

6721 Merriman
Garden City, MI 48315
<http://modelarestorers.org>
U.S. Membership Cost: \$45

MAFCA National Tour 2021



2021 National Tour Update

January 2021

"REGISTRATION FORM AND APPAREL INFORMATION"

MAFCA 2021 National Tour "A White Mountain Adventure"

**June 20 – 25, 2021 Hub and Spoke Tour – Home base - North
Conway, New Hampshire.**

Registration form and Apparel Information can be found on our website:

www.2021mafcanationaltour.com and in the Jan/Feb The Restorer's online digital copy as well as in the hard copy print.

Please be reminded that you must be an active member of MAFCA to register and to participate in the tour. Information for becoming a MAFCA member can be found on the tour website.

Important: If you register and pay online with PayPal **please** check back and sign in on your PayPal account after 48 hours to approve the payment transaction for the tour.

The Host hotel has a limited number of rooms left. We have made arrangements with another sister hotel if the host hotel sells out and will post it on our website: www.2021mafcanationaltour.com

Please check our tour Website, Facebook, MAFCA's website and the "The Restorer" for additional information and updates as they become available.

Sincerely;

Mark Smith Tour Chairman

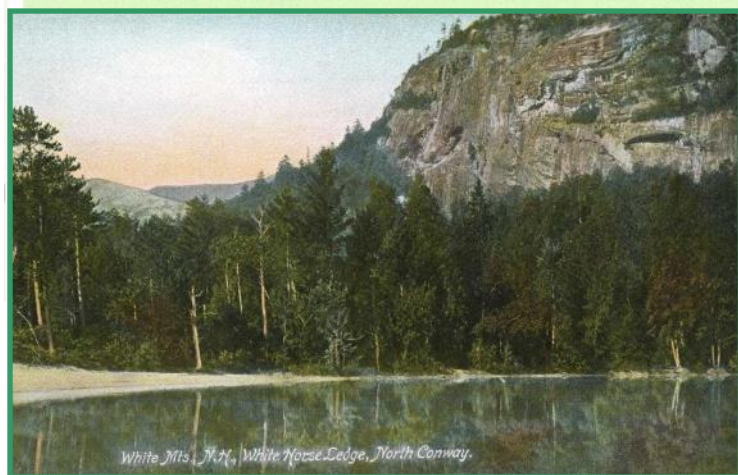
Keith Costello Vice Chairman

Host: New Hampshire Lakes Region Model A Club

www.2021mafcanationaltour.com

www.facebook.com/groups/942306399533378

Email: whitemountainadventure2021@gmail.com



Tech Talk

February 2021

TECH TIPS

1. Is your "A" hard to steer? This can be caused by a worn Steering Box, worn Balls on the Steering Arms, Pittman Arm, and Bushings in the Drag Link ends. If the front Spring is weak and sagging, it will throw off the Caster of the Front- End alignment, and cause it to steer hard.
2. If you can stand in front of the car about six or more feet and see the Front Axle below The Splash Apron it is good. If a little of the Axle is showing, or none at all, you need a new Spring. Replace it with a new one. "Do Not" have it Re-arched as in time it will go back to the same height it started from.
3. In rebuilding the Steering Box, replace the Sector, Worm, Bearings, Races, and Gaskets. While at it, buy a accessory Oil Seal Retainer Tube to keep Oil out of the Light Switch. A Sector Shaft with Needle Bearings and Oil Seals are well worth the Money. Use 600W Oil in the box or a 50-50 mixture of 90-120W gear oil and STP. "Do Not" use Grease, it Will solidify, and stop lubricating everything.
4. Worn King Pins, and the Ball on the front Radius Rod can cause adverse steering. Make sure you have the original style Radius Ball cap and not the one with a rubber ball as they wear out fast and get loose.
5. After the repair is done, take it to a good Front End Shop, such as; Atlas Spring Co., they Have been aligning old Fords for many years.

Happy Touring

Jim Broadhead
Club Technical Editor

NOTE'S FROM OUR MEMBERS



The **Woleslagel's** visited their daughter in Sarasota in December of last year. They visited the Summer Estates of Edison and Ford in Ft. Meyer, Florida.



ERA FASHION

MEN'S DAYTIME WEAR



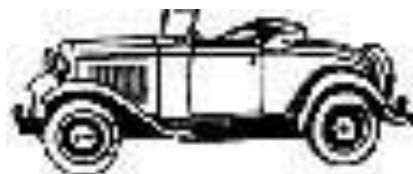
- A. A stylish English model of overcoating about three-fourths wool, in a modified herringbone weave with contrasting stripes interwoven. Warm French facing across chest and down the front.
- B. Another smart English style of 100% all wool overcoating in diagonal weave, with three roomy pockets. Colors: dark brown or blue-gray mixture.
- C. An "Alden" overcoat of all wool boucle', in solid color with a rich pebbled surface.
- D. All wool plaid back overcoating in a herringbone and diamond weave. Rayon striped French facing for warmth. Colors; reddish brown or medium gray.
- E. English style copied from an expensive London model. Double-breasted of warm all wool overcoating in herringbone weave, emphasized at intervals to form a cross-stripe effect, which combined with rayon stripes produces an almost indistinguishable plaid. Colors; medium tan or medium gray mixture.

Copied from A Book of Fashion Facts page 52

LOCAL AND NATIONAL CALENDARS

2021 SWAP MEET & CAR SHOW SCHEDULE

March 12-13, 2021....	46th Annual KS Sunflower Swap Meet for Charity.....Century II	CANCELED
March 18-20, 2021.....	Norman Swap Meet, Cleveland County Fairgrounds, 615 E. Robinson.....Norman, OK
March 19-20, 2021.....	Chickasha Pre-War Swap Meet.....Chickasha OK
April 21-25, 2021....	Spring Carlisle Swap Meet..... www.carsatcarlisle.comCarlisle, PA
April 22-24, 2021.....	Pate Swap Meet, Texas Motor Speedway... www.pateswapmeet.comFort Worth, TX
May 6-8, 2021.....	Chickasha Spring Swap Meet... www.chickashaautoswapmeet.comChickasha, OK
June 16-19, 2021.....	Petit Jean Swap Meet.....Petit Jean, AR
July 8-10, 2021.....	Iola Old Car Show & Swap Meet.....Iola, WI



2021 FUTURE REGIONAL & NATIONAL MODEL A MEETS

April 9-11, 2021.....	MARC Membership Meet-Script A Region.....Bay City, MI
June 20-24, 2021.....	MAFCA National Tour.....North Conway, NH
June 7-11 2021.....	MARC National Meet.....Oshkosh, WI
2021.....	National Awards Banquet MAFCA.....Ft. Worth, TX
2022.....	MARC National Meet Nickel A Region.....Charlottesville, VA
2022.....	MAFCA National Convention—Alamo A's.....Kerrville, TX
2022.....	MARC National Membership Meet, Swan Lake.....Plymouth, IN
August 17-19, 2022	MARC National Tour.....Bark River, MI

ERIC WENINGER
OWNER

2045 S BEDFORD ST
WICHITA, KS 67207

316-619-1821 CELL
316-685-2553 SHOP

info@modelamedic.com
www.modelamedic.com
www.facebook.com/modelamedic

**THE
MODEL A
MEDIC^{LLC}**



NEW AND USED MODEL A FORD PARTS

SPECIALIZING IN FULL SERVICE REPAIRS
AND RESTORATION

ELLERMAN SPEEDOMETERS



STEWART-WARNER FOR
FORD MODEL A
OVAL OR ROUND
RESTORATION



DENNIS ELLERMAN
316.722.2107 OR
316.765.1506

ELLERMANSPEEDOMETERS@COX.NET

B&B Electric Motor Co.

Your One Stop Industrial Service Center

**New • Repair • Rewind
Electric Motors • Pumps**

Phone (316) 267-1238 • 1-800 499-1238
Fax (316) 267-0599 • Emergency (316) 641-0806
email: bbemc@msn.com • bbelectricmotor.com

332 Lulu
Wichita, KS 67211

Ed Giesen
Customer Service



COSH
REAL ESTATE SERVICES

RAY HARSHFIELD
Realtor

ADDRESS
1356 N Emporia St
Wichita, KS 67214

CELL: 316-305-1705
OFFICE: 316-260-2674
FAX: 316-260-9902
ray.harshfield@cosh.us

A-Z Model A Parts - Zanes

Ron and Sondra Kester, Owners

773 Central Street

Glade, Kansas 67639

Phone: 785-543-6729

Fax: 785-543-3013

e-mail: ron@ronsrestoration.com

Mishelle Whitney

mishelle@loraccompany.com

624 E. Harry Street
Wichita, KS 67211

316-263-2565 * 1-800-554-0144

Fax 316-263-5181

www.loraccompany.com

Lorac Company, Inc.

Basement Window Well Cover * Powder Coating
* Custom Metal Fab * Media Blasting

Wichita A's Model A Ford Club
P.O. Box 25
Wichita, KS 67201



Address Service Requested

Wichita A's Model A Ford Club Contacts

President, Alan Orr

president@wichitaas.com..... (316)

Vice President, Linda Kibbe

vicepresident@wichitaas.com.....(316)

Secretary, Judy Sharp

secretary@wichitaas.com.....(316)

Treasurer, Claudia Ellerman

treasurer@wichitaas.com..... (316)

Tour Chairman, Don Grabendike

.....(316)

Membership, Susan Stone

membership@wichitaas.com.....(316)

Newsletter Editor, Sheila Orr

editor@wichitaas.com.....(316)

Webmaster, Darren Schuster

webmaster@wichitaas.com

The Rumbleseat Review is the official publication of the Wichita A's Model A Ford Club, Inc., a local chapter of the Model A Ford Club of America and the Model A Restorers Club. It's purpose is to keep members informed of past, present and future events, activities, and club news. In addition, this newsletter includes articles and other information to aid in the restoration and enjoyment of the Model A Ford automobile.

This publication is mailed or emailed to members, prospective members and editors of similar publications prior to monthly meetings. Meetings are usually the fourth Monday of the month. Members may publish antique car related ads only for free of charge which includes items wanted, items for sale, or items for trade. We invite members to submit articles containing technical Model A information and other interesting tidbits for publication in this newsletter. Items to be published must be submitted to the newsletter editor by deadline shown in the calendar. Wichita A's membership dues are \$25.00, per year (October to September 30). MAFCA dues are \$50.00 per year and MARC dues are \$45.00 per year. A business card advertisement in this newsletter is \$25.00 per year.