





Wichita A's Model A Ford Club

# Rumbleseat Review

February 2010

Volume 25 Issue 2

## February 2010

S	M	T	W	TH	F	S
	1	2	3	4	5	6
7	8	9	10	11	12	13
14	15	16	17	18	19	
21		23	24	25	26	27
28						

## March 2010

S	M	T	W	TH	F	S
	1	2	3	4	5	6
7	8	9		11	12	13
	15	16		18	19	
21		23	24	25	26	27
	29	30	31			

## April 2010

S	M	T	W	TH	F	S
				1	2	3
	5	6	7	8		10
11	12	13	14	15	16	17
18	19	20	21	22	23	24
25		27	28	29	30	

## February Refreshments



- Vinita Hawthorne
- Nancy Slater
- Sue Robare
- Claudia Ellerman
- Dawna Ruggles

## Inside this issue:



Calendar	1
Meeting Minutes	2
Announcements	4-5
Future Activities	5
Swap Meet	6-8
Tech Talk	9
Touring Information	10
Future Schedules	11
Era Fashion & Classifieds	11-12
Classifieds	13

## Club Tours & Meeting Schedule

### February 2010

- 20.....After Swap Meet & Bunco Party.....Ludlows & Kottas  
22.....Club Meeting at Minisa Park, 704 W. 13th N.....7:00 PM  
Program: 2010 Tour Planning by Richard Kibbe

### March 2010

- 10.....Newsletter Deadline....editor@wichitaas.com.....(316) 838-3452  
22.....Club Meeting at Minisa Park, 704 W. 13th N.....7:00 PM

### April 2010

- 9.....Newsletter Deadline....editor@wichitaas.com....(316) 838-3452  
9.....MARC Membership Meet, Sycamore A Region...Terre Haute, IN  
26.....Club Meeting at Minisa Park, 704 W. 13th N.....7:00 PM

### May 2010

- 12.....Newsletter Deadline....editor@wichitaas.com.....(316) 838-3452  
26.....Club Meeting at Minisa Park, 704 W. 13th N.....7:00 PM

### June 2010

- 16.....Newsletter Deadline....editor@wichitaas.com.....(316) 838-3452  
26.....Club Meeting at Minisa Park, 704 W. 13th N.....7:00 PM

## Wichita A's Club Minutes

---

The 275th Wichita A's meeting was called to order by **Ed Giesen** President on January 25, 2010 with 120 members present.

Motion was made by Eric Baggs seconded by **John Masters** to accept the minutes as printed in the Rumbleseat Review. Motion was passed.

Treasurer **Bert Courtright** gave the financial report on the last two months.

Sunshine Lady **Bonita Graham** reported the club had a healthy sunshine report.

Correspondence was Thank You notes, letters and flyer from national Model A Ford Museum.

No report for Wichita Area Club Council from **Doug Schoemaker**.

**Kerry Steffens** had no report for MARC and MAFCA.

Old business was reports on November Charity Auction, Ladies Christmas Brunch, Club Christmas Party and New Years Day Tour.

New business was reminding members to sign up for duties during Swap Meet. **June Hall** has a

sheet to sign up to bring food for Friday and Saturday during the Swap Meet.

**Ed Giesen** presented information for Regional Meet at Omaha, NE, June 7-11, 2010.

**Lawrence Kottas** told members Village Charter would like to put a tour together for us. Will have them come up with a proposal.

**Ed Giesen** brought members up to date on recent board meeting. Main item was increase in space fee to \$40.00 per space due to additional expenses for the club.

Refreshments served by **Dennis Anderson, Eilene Cox, Lenette Kottas, June Hall** and **Kathleen Paxton**.

Program was presented by Frank Chenoweth regarding Swap Meet on February 5th & 6th.

Meeting then adjourned.

**Lenette Kottas**, Secretary

## Board Minutes of Wichita Model A Club

---

Board meeting of Wichita Model A Club was held on January 21, 2010 at **Frank Chenoweth** home with President Ed Giesen calling it to order.

In attendance were President **Ed Giesen**, Vice President **Jim Broadhead**, Treasurer **Bert Courtright**, **Lenette Kottas** Secretary and Past President **Gary Hileman**.

**Frank Chenoweth** presented the status regarding the Swap Meet and it's possible future. Noted our insurance will cost more this year. Approximately \$1,800 for insurance and Coliseum expenses will be up additional 2 ½ percent.

Motion by **Ed Giesen** second by **Jim Broadhead** was to go ahead in making plans for 2011. Motion passed.

Motion by **Gary Hileman** second by **Jim Broadhead** was not to raise space fee for 2011. Motion failed.

Motion by **Bert Courtright** second by **Lenette Kottas** was to increase space fee to \$40.00 for 2011. Motion passed.

The future status of the Swap Meet past 2011 was tabled till after the County Commissioners election. At that time we hope to have the status of the facility.

Discussion was held on business articles and business ads. Club policy on commercial advertising articles is to be in business card section of newsletter only. Board members in agreement.

Meeting then adjourned.

**Lenette Kottas**, Secretary.

## This n' That

### Note from the President

---

Another swap meet is behind us and now we can begin looking toward future events. We will be having "Tour Planning" as the program at the February meeting. Our goal for this year is to have some kind of tour or activity every month. In our region we have always been known as an active club with lots of tours and activities going on.

Speaking of our region, we will be hosting the regional meet in 2013. Now is the time to select a chairperson for that meet and begin making plans and arrangements for the meet. If you are interested in this job please call me or e-mail me and we can talk about it.

As we move forward we will need a new swap meet chairman and secretary soon. Again if you are interested in these jobs please call me. I would like to thank **John Stone, Frank Chenoweth, and Eric Baggs** for all the work that they have put in to help make our swap meet a continuing success.

**Ed Giesen**

President

### Note from the Editor

---



*Ruth Anne Praeger, Bonita Graham, Linda Kibbe and a customer.*

While we were working in the office, of Pavilion-1 at the swap meet, we were asked a lot of questions. Some asked how they could become a member of our club. We had ran out of membership forms so we referred them to our web site, **www.wichitaas.com**. There they can download the membership form and mail it in. A lot of shoppers requested information concerning our swap meet next year, Feb. 4-5, 2011. They were told to check our web site in November of this year and we would have our swap meet flyer and any other information uploaded.

Our tour schedule will also be uploaded sometime in March after the tour planning meeting. Remember to keep checking our web site for updated material!

**Linda Kibbe**, Newsletter Editor

## Ladies and Gentlemen

---

The cookie list for 2010 is almost complete. We do still have a few openings however. In May, we need one more person, June two people and November 2 more people.

If you are new to the club and want to participate, here's the way it works. Each person who is signed up for a particular month brings (or sends) 5 dozen cookies to the meeting. They may be purchased or homemade; just provide them and we will

take care of the rest. If you are not able to come to the meeting, that is not a problem. We have lots of people to help serve.

No one needs to sign up more than once during the year as we have lots of club members. The sign-up sheet will be available at the club meetings or you may call me at 722-8993.

Thanks for taking part in this club activity.

**Ruth Anne Praeger**

## Announcements

### February 2010 Birthdays

3-1 Frank Chenowith  
 3-1 Jim Nungesser  
 3-2 Dale Havercroft  
 3-3 Carolyn Nungesser  
 3-4 JoAnn Tackett  
 3-5 Ed Hakenholz  
 3-5 Claudette Laurie  
 3-10 Gary Cox  
 3-10 Barbara Moore  
 3-13 Charles Hawthorne  
 3-13 Ken Meyer  
 3-14 Wayne Orr  
 3-14 Charles Schuman  
 3-15 Jerry Allen  
 3-16 David Moore  
 3-18 Janet Setser  
 3-19 Clarence Howland  
 3-19 Doris Jean Ludlow  
 3-21 Roger Graham  
 3-25 Steve Boivin  
 3-25 Ira Hall  
 3-25 Lana Waite  
 3-27 Brenda Rogers  
 3-28 Carnella Anderson  
 3-28 Bob Titus  
 3-29 Earlene Foote  
 3-30 Janice Wilson  
 3-31 Don Arnold  
 3-31 Richard Ashford

### Deepest Sympathy

Prayers of sympathy for Bob & Barb Phye who are traveling to be with their daughter and family after the death of their baby.

### Congratulations

Eric & Brigitte Baggs announces the birth of their daughter on Feb. 3. Kendall Marie is 7lbs. 1oz. and 18 inches long. Lauren is the proud big sister and Jim and Brenda Broadhead are the Grandparents.

### New Members

Steven Albers  
 .....  
 .....  
 .....  
 .....  
 Jimmy & Bettie Brooks  
 .....  
 .....  
 .....  
 '28 special coupe  
 .....  
 Mark & Jackie Clark  
 .....  
 .....  
 .....  
 '31 tudor  
 .....  
 Richard & Karen Dudley  
 .....  
 .....  
 .....  
 coupe  
 .....  
 Ron & Orpha Eyres  
 .....  
 .....  
 .....  
 '29 Tudor  
 .....  
 Russel Guthrie  
 .....  
 .....  
 .....  
 '29 speedster  
 .....  
 James & Laura Hawthorne  
 .....  
 .....  
 .....  
 Dave & Jo Lerch  
 .....  
 .....  
 .....

Phil & Deniece Ross

.....  
 .....  
 .....  
 '31 Coupe

Bob & Earlene Shafer

.....  
 .....  
 .....  
 '30 Tudor

Mike & Sheila Wendling

.....  
 .....  
 .....  
 '28 Tudor, '31 Coupe

### Roster Update

Hawthorne, Brad & Karen

.....  
 .....  
 .....

Newhouse, Jim

.....  
 .....  
 .....

### 2 Model A's Being Auctioned

1930 Model A Woody delivery and 1928 Model A Sedan blind back will be sold during an auction on Saturday March 6<sup>th</sup>, 2010 at 10 AM. Location is 3514 W. St. Louis, Wichita, KS.

Further information can be found at Wray Auction Service, Randy Wray, Belle Plaine, KS  
Phone: 620-488-3836

### Newsletter Deadline

Wed - March 10, 2010  
 Fri - April 9, 2010

## Announcements Continue:

### 2010 Roster

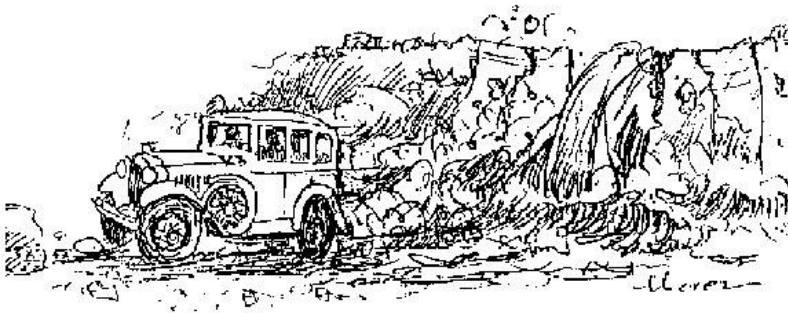
Rosters for 2010 will be printed March 1. IF you have moved or are going to move or have any updates to your address or phone numbers, please send them to Susan Stone at [jstone41@cox.net](mailto:jstone41@cox.net) before then. I may have to limit phone numbers to 2 so if have a preference other than home and one cell, let me know.

### March 2010 Refreshments

Jane McLaughlin  
Becky Straub  
Susan Stone  
Janice Wilson  
Ron Cole

### April 2010 Refreshments

Ruth Goodman  
Sue Johnson  
Brenda Broadhead  
Brigitte Baggs  
Nora Meyer



## Future Activities and Tours

### Post Swap Meet Party & Bunco

On Saturday, February 20th, 2010 at 6:00 PM we are meeting at Minisa Park, 704 W. 13th for a covered dish dinner and Bunco party.

**Remember this is the Saturday before the club meeting.**

Bring a covered dish or dessert of your choice.

Eating utensils and drinks will be provided. We will be playing Bunco following the meal.

If you have any questions please contact:

**Doris Jean Ludlow** at ..... or  
**Lenette Kottas** at .....

### Regional and National Meets

#### Jun 7-11 Meadowlark A's Regional Meet

Crown Plaza, 655 No. 108th Ave., Omaha, NE.  
<http://meadowlarks.omahaneb.org>

#### Jun 13-18 2010 MARC National Meet

French Lick, IN  
<http://2010marcmeet.com/>

#### Jun 19-27 Pony Express Model A Tour,

St Joseph MO—Sacramento CA  
<http://www.mafca.com/>

#### Aug 1-6 MAFCA International Meet

Vancouver, BC, Canada  
<http://www.mafca.com/>

**For updates to the above tours, be sure to read "The Restorer" and "Model A News" magazines.**



# Past Tours and Events

## 35th Annual Sunflower Swap Meet

### Statistics and anecdotes

Wichita A's Swap Meet Web Page hits:

November 09	431
December 09	915
January 10	1692
February 10	3188 (first 4 days)
Total hits	6,226

2010 Vendor Survey

Arkansas 4, Colorado 1, Florida 1, Georgia 1, Illinois 4, Iowa 4, Kansas 345, Minnesota 2, Missouri 34, Nebraska 2, Oklahoma 32, Texas 10. Total 12 states, 440 vendors.

Complimentary cups of coffee on set up day: 235

Complimentary cookies: 35 dozen

How many people attended? We really don't have any way to know, but based on the amount of parking passes sold in prior years we are estimating the figure would come in between 20,000 and 30,000. What we do know for sure: In one 40 minute period mid-day Friday, 700 people entered Pavilion 2.

Interesting phone calls the week before:

Call from Arizona, fellow is meeting someone from NY to get parts.

Another fellow from New York is pulling a trailer to Hays, Ks to pick up something. Thought he would stop by the swap meet.

How big an item can I bring to the swap meet? When asked if he had a space at our meet; he said "no". Our waiting list fluctuates between 60 and 80 names.

Lost and Found: A lady dropped in the rest room stall, a bunch of currency folded in half with her drivers license in the middle. Some nice person found it and immediately turned it in to the office. Our staff paged the owner and she quickly claimed it. Her husband came in later and reported that there was over \$200 in the pack. Naturally they were very grateful. Another nice spectator turned in a digital camera that he had found. Fortunately the case had the owners name inside and our staff was able to quickly reconnect the owner with her camera.

We had very few complaints about the increase in price of spaces for next year. For some reason we had more people than ever before, stop by the office to offer their appreciation to our club for holding this event. Nice to hear. RG



*Richard Brandt doing a little shopping.*



*Roger Graham talking to a customer.*



*Father & Son. Wayne and Alan Orr.*

## Swap Meet cont:



*Chris Cushman pushing an extremely heavy door shut in the Car Barn*



*P-1 building*



*Gary Hileman is a very proud of himself. He was sold for \$750 to hire out for hard labor duties. He is being considered to work with "Dirty Jobs" on the Discover Channel.*



*Ed Giesen, our club President, holding a spare tire bracket.*



## Swap Meet Cont:



*Tim Straub and Dave Burke taking care of the gate outside.*



*The old and new, 1921 Model "T" and 1971 Mustang.*



*Charlie Sill observing activity in P-2.*



*Bud Valerius offering "A" 28 Pickup Fix-er-upper.*



*Nancy Slater holding down the fort for her sons.*



*Wallace Wade is knee deep in tires.*



*Ray Harshfield and Bert Courtright are on door patrol at the car barn.*



*John Stone and Ron Little watching the crowd.*



*Jim Nungesser catching up on the news.*



## Tech Talk



### Flywheel Housing Alignment

The flywheel housing on the Model A is a mundane component on the car and is often overlooked as far as drive train alignment is concerned. Minor or major vibration can occur if the flywheel housing is warped or alignment shims are not installed behind the two ears on the top of the housing. With these two shims which are .010" thick, installed it is advisable to bolt, or attach with a magnetic base, and a dial indicator to the crankshaft flange, and check the variation around the circumference of the flywheel housing where the bell housing bolts up. If there is more than .006" variation around the perimeter, discard the housing and try another. See page 218 of the Ford service bulletins, dated, Feb, 1928. Ford knew early in Model A production that misalignment could cause excess vibration. Some flywheel housings are badly warped and are a cause of engine vibration and/or transmission growl, or even jumping out of gear in extreme cases. If it isn't warped too badly, you can sometimes add different thickness shims at the top two ears to reduce some of the warping. This should be checked again after the flywheel is bolted to the crank flange.

If a warped flywheel housing is bolted up to the bell housing, the main shaft and transmission will be out of alignment. The ideal is to have straight alignment from the main transmission shaft all the way to drive shaft.

Case history: I had read this theory many years ago but didn't pay much attention. Then I removed the engine from my phaeton for a rebuild. This engine had very little vibration. The re-builder at that time went all out to balance the engine which included the installation of counterweights on the crankshaft, re-balancing the flywheel and even welded weights on the pressure plate. Before I reinstalled the engine I noticed that one of the protrusions for the perimeter bolts was missing a small chunk of the flywheel housing. So, I found another housing in an iron pile. I sandblasted it, checked for cracks, painted and installed it.

After breaking in the engine for a couple hundred miles, I went out on the highway and accelerated to 45mph and experienced major vibration. What a disappointment! After a few months and a lot of head scratching, I took the engine back out and checked the flywheel housing for warping. I found this unit to be out of spec. as much as .012." I then discarded the "iron pile" housing and found another. I spent a lot of time measuring the perimeter of the latest housing and experimented with various thicknesses of shims until I had it close to .006". Engine re-installed and back on the road, the vibration was gone.

In conclusion: Don't under-estimate the importance of drive line alignment.

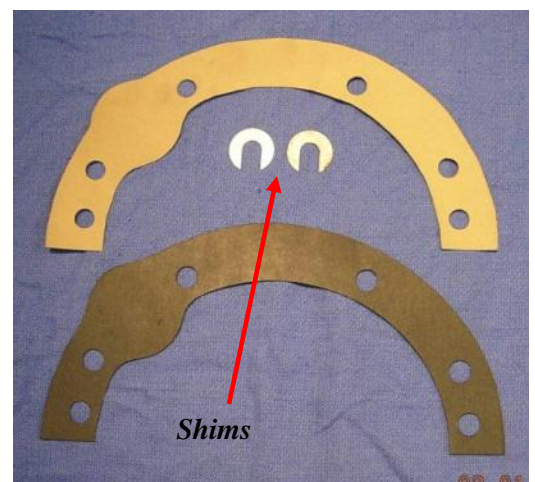
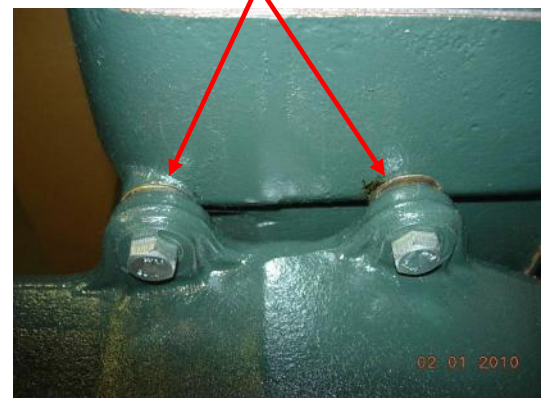
If you engage in this procedure with dial indicator, be aware that you will have to turn the engine backwards, because of a void area for the starter. You need to have the front pulley really tight or the nut will unscrew. The K R Wilson tool issued to mechanics for this procedure included a device to turn the engine from the rear and therefore not use the front pulley. A dial indicator and magnetic base can be purchased from, Harbor Freight for \$20-\$25, depending on sale prices.

Thanks to **John Stone** for the props, pictures and technical tips to support this article. RG



*Dial indicator and magnetic base installed on a Model A crankshaft*

*Original .010" horseshoe style shims must go here. (shims)*



*.010" Shims compensate for camshaft gasket. Thinner supplemental shims may "tweak" alignment, usually on one side or the other, but not both.*

# Touring Information



## "A" TOUR CHECK LIST

### Note:

Now that you know how to prepare your Model A for the summer touring season bring your ideas for future tours to the February meeting .

I will have some calendars with some of the tentative events listed.

As our president has said we need to fill our summer with activities for all members.

See you Monday.

Richard Kibbe  
Tour coordinator

Before each tour make the following inspections:

- ☐ Fan blade – cracked, bent, too close to radiator
- ☐ Fan belt
- ☐ Water pump – end play and packing
- ☐ Radiator hoses
- ☐ Water level in radiator – plain water with anti-rust additive
- ☐ Tire tread and inflation – 35 psi
- ☐ Wheels – cracks, wobbled out lugnut holes, tightness on hub, lugnut tightness
- ☐ Rear axle nut tightness – be sure to install new cotter keys
- ☐ Front wheel bearings
- ☐ Steering – excess play or tightness
- ☐ Shock arms and links
- ☐ Head torque
- ☐ Distributor set screw
- ☐ Windshield wiper motor and blade – Rain-X on windshield
- ☐ Lights – head, parking, brake, tail, interior, turn signals if installed
- ☐ Generator 2 to 10 amps      2 to 5 amps for long summer tours
- ☐ All wiring connections
- ☐ Battery posts – clean
- ☐ Battery water – distilled
- ☐ Points
- ☐ Spark plugs – clean and gap before first tour
- ☐ Brakes – adjust
- ☐ Wishbone ball for tightness
- ☐ General inspection for loose parts and pieces
- ☐ If car hasn't been run for awhile- 20 mile test run

### Special points for open cars

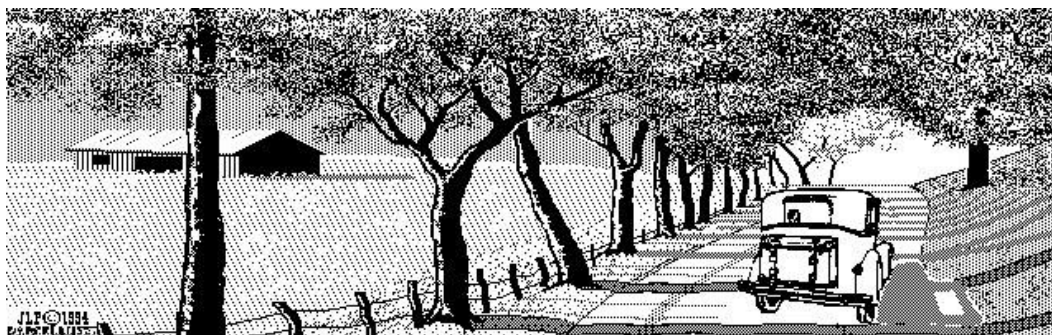
- ☐ Wind wing screws and nuts
- ☐ Windshield wing nuts
- ☐ Loose fabric and nails on top
- ☐ Side curtain drill

### Lubrication – follow the mileage recommended in service manual

- ☐ Change oil
- ☐ Oil distributor shaft and distributor cam
- ☐ Oil generator front & rear
- ☐ Oil accelerator shaft
- ☐ Top off differential
- ☐ Top off transmission
- ☐ Top off steering gear
- ☐ Grease water pump
- ☐ Grease chassis
- ☐ Grease throw-out bearing - sparingly

## 2010 - 2010 Swap Meet Schedule

Feb 26-28, 2010.....	WCAAC Decatur Swap Meet (Fairgrounds)	.....Decatur, TX
Mar 18-19, 2010.....	Chickasha Pre-War Swap Meet.....	.....Chickasha, OK
Apr 10-11, 2010.....	Ararat Shrine Swap Meet (101 SW Oldham, Route 50 & 291)	.....Lee's Summit, MO
Apr 29 - May 2, 2010.....	Pate Swap Meet (TX Motor Speedway)	.....Fort Worth, TX
May 6-8, 2010.....	Chickasha Spring Swap Meet (adjacent Grady Fairgrounds)...	.....Chickasha, OK
Jun 15-19, 2010.....	Petit Jean Swap Meet (Petit Jean Mountain).....	.....Petit Jean, AR
Jun 26-27, 2010.....	Swap Fremont - 25th Annual - Christensen Field.....	.....Fremont, NE
Jul 8-11, 2010.....	Iola Old Car Show & Swap Meet.....	.....Iola, WI
Aug 20-22, 2010.....	Springfield, MO Swap Meet (Ozark Empire Fairgrounds).....	.....Springfield, MO
Sep 18, 2010.....	Hunting Country Swap Meet, Downtown Alva.....	.....Alva OK
Sep 18-19, 2010.....	Ararat Shrine Swap Meet (101 SW Oldham, Route 50 & 291)	.....Lee's Summit, MO
Oct 6-9, 2010.....	Hershey Region Swap Meet.....	.....Hershey, PA
Oct 15-19, 2010.....	Chickasha Antique Auto Club Swap Meet & Car Show.....	.....Chickasha, OK
Oct 23-24, 010.....	Sedgwick Street Rodders Swap Meet, KS State Fairgrounds	.....Hutchinson, KS
Oct 29-31, 2010.....	Conroe Swap Meet (Montgomery County Fairgrounds).....	.....Conroe, TX

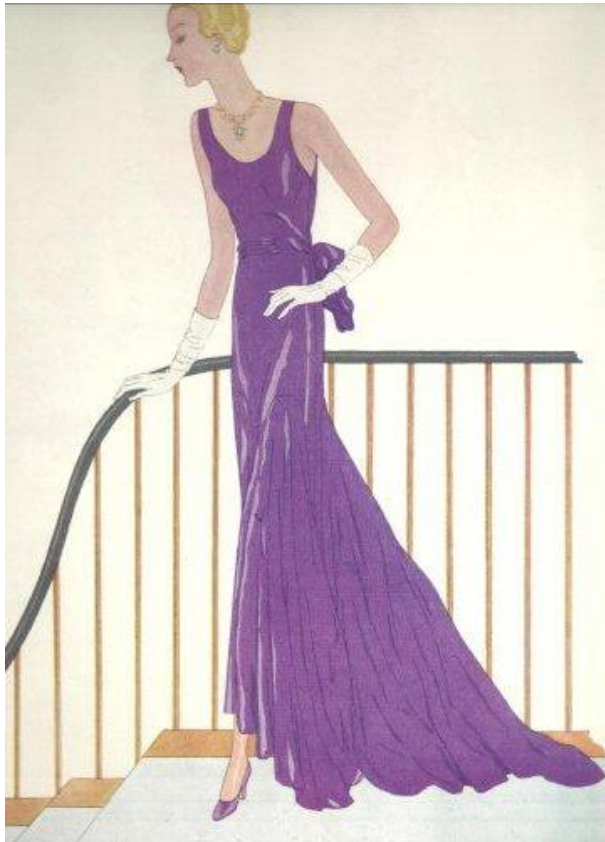


## 2010 - 2012 Future Regional & National Model A Meets

April 9-11, 2010.....	MARC Membership Meet, Sycamore A Region.....	.....Terre Haute, IN
June 7-11, 2010.....	Meadowlark A's Regional Meet.....	.....Omaha, NE
June 9-13, 2010.....	Texas Tour - Fort Worth Model A Ford Club.....	.....Granbury, TX
June 13-18, 2010.....	MARC National Meet, .....	.....French Lick, IN
June 19-27, 2010.....	150th Anniversary Pony Express Model A Tour.....	St. Joseph, MO- Sacramento, CA
August 1-6, 2010.....	MAFCA International Meet.....	.....Vancouver, BC, Canada,
December 8-11, 2010.....	MAFCA Annual Membership Meeting.....	.....Colorado Springs, CO
June 5-11, 2011.....	Plain Ol' A's Regional Meet.....	.....Kansas City, KS
2012.....	Central Iowa Regional Meet.....	.....Des Moines, IA



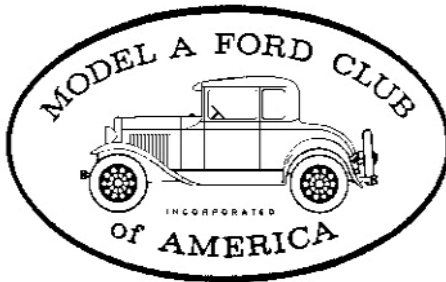
## Era Fashions - L'echo de Paris



### *Very Young Lines End in Trailing Dignity*

Formal evening gowns remain young in spite of long flowing lines. In this case the youthful features are tucks at the waist and a large bow in the back.

*Copied from McCall's Magazine, May 1930 issue.*



**MAFCA**  
250 S. Cypress St.  
La Habra, CA 90631 - 5515  
U.S. Membership Cost: \$40

The Wichita A's Model A Ford Club encourages members to join both National MARC and MAFCA Clubs.



**MARC**  
6721 Merriman  
Garden City, MI 48315  
U.S. Membership Cost: \$38

## Please Patronize Our Advertisers



**BARNEY L. CAPPS**  
President/General Manager

2121 S. Edwards (316) 942-9351  
Wichita, KS 67213-1868 Fax (316) 942-6771  
Mobile (316) 734-5000

### Andover Ace Hardware

642 N. Andover Rd. • P.O. Box 107  
Andover, KS 67002  
Phone: 316-733-0023 FAX: 316-733-2374  
Email: A04487A@acehardware.com  
Website: www.acehardware.com



**Marc Wendt**  
**Karolyn Wendt**  
**Erich Wendt**

### PREFERRED HEARING AID CENTERS OF KANSAS

9415 E. Harry  
Suite 206  
Wichita, KS 67207

Phone: 316-618-1424



**Al Wilson**  
Hearing Instrument Specialist

Email: Preferredhear@sbcglobal.net

**TRI COUNTY AGENCY, INC**  
**K. Verdou Parish**  
 Representing J.C. Taylor for Antique Auto Insurance  
 407 N. Merchants St., P.O. Box 670  
 Belle Plaine, KS 67013  
 1-800-488-2408 FAX 620-488-3834  
 Email: [tricoagvy@aol.com](mailto:tricoagvy@aol.com)  
 "Serving Our Customer Since 1973"

*We've got your*  
**COLLECTOR CAR COVERED**

Fueled by:  
  
 Collector Car Insurance™

JAMES & JUDI SHARP  
 1721 E OSAGE, SUITE 100  
 DERBY, KS 67037  
 (316) 788 5257

**Darrell's Tile**  
 1225 E. Pawnee • Wichita, KS 67211  
 (316) 265-8392

STAN LUDLOW

Marble, Granite, Limestone  
 Ceramic Tile, Mexican Tile  
 Professional Installation Since 1980

**JEFF DEWEY**  
 ATTORNEY AT LAW

1020 N. MAIN, SUITE A DEWEY & LUND, L.L.P.  
 P.O. BOX 635 316-265-6600  
 WICHITA, KS 67201 FAX 316-265-0088  
 jdewey@deweylund.com TOLL FREE 800-680-6614

  
**WALLACE W. WADE**  
**SPECIALTY TIRES**  
 530 Regal Row  
 Dallas, Texas 75247  
 (214) 688-0091  
 Fax (214) 634-8465  
 1-800-666-TYRE  
[www.wallacewade.com](http://www.wallacewade.com)  
[wallacewade@earthlink.net](mailto:wallacewade@earthlink.net)

**Vintage Tires**  
**ANTIQUE & CLASSIC**  
**CARS - TRUCKS**  
**MILITARY - TRACTORS**


**WALLACE W. WADE**  
 1 800 666 TYRE


**SPECIALTY TIRE DISTRIBUTOR**  
 "IF WE DON'T HAVE IT — WE'LL GET IT"

  
**AMERICAN FAMILY**  
**INSURANCE**  
 AUTO HOME BUSINESS HEALTH LIFE  
[www.amfam.com](http://www.amfam.com)

**PAMELA KIRK AGENCY**  
 9505 WEST CENTRAL SUITE 102  
 WICHITA KS 67212

  
 OFFICE: 316-729-9797  
 FAX: 316-729-9898

  
**RAY HARSHFIELD**  
 Office: (316) 942-1925  
 Fax: (316) 943-1311  
 Cell: (316) 305-1705  
[www.wichitagoldkey.com](http://www.wichitagoldkey.com)

**GOLD KEY**  
 REALTORS®  
 3535 W. 13th  
 Wichita, KS 67203 

*The Model "A" Medic LLC*  
 Specializing in ALL Your Parts, Service &  
 Restoration Needs for your Model "A" Ford

Eric Weninger Hm: (316) 685-2553  
 2045 S Bedford Rd Cell: (316) 619-1821  
 Wichita, KS 67207 [modelamedicllc@sbcglobal.net](mailto:modelamedicllc@sbcglobal.net)

Everything from tune-ups to ground up restorations

**Clarence Howland**  
 1911 Briarcliff  
 Emporia, Kansas 66801

BUY - SELL - TRADE  
 Antique Cars and Parts

Cell: (620) 341-3533  
 Home: (620) 342-0215



**B&B Electric Motor Co.**  
*Your One Stop Industrial Service Center*

**New • Repair • Rewind**  
**Electric Motors • Pumps**  
 Phone (316) 267-1238 • 1-800 499-1238  
 Fax (316) 267-0599 • Emergency (316) 641-0806  
 email: [bbemc@msn.com](mailto:bbemc@msn.com) • [bbelectricmotor.com](http://bbelectricmotor.com)

332 Lulu Ed Giesen  
 Wichita, KS 67211 Customer Service

  
**Cushman Corporation**  
**Speedometer Repair**  
[www.cushmanspeedometer.com](http://www.cushmanspeedometer.com)  
[info@cushmanspeedometer.com](mailto:info@cushmanspeedometer.com)

5704 N. Athenian Ave.  
 Wichita, KS 67204  
 (316) 648-2444  
 (316) 832-9090

*Powder Coating Services*  
 A Division Of  
**LORAC COMPANY**

"FOR A DURABLE OVEN-CURED FINISH"

Motorcycle & Auto • Lawn Furniture • Hobbyist  
 Manufacturers • Aviation • Agriculture • Many Others

**Sandblasting Facilities**  
 316-263-2565 • 800-554-0144 • Fax 316-263-5181

MITCH HERRING 624 E. Harry  
 COATINGS MANAGER Wichita, KS 67211-4205

**SUNFLOWER SWAP MEET**  
 February 5-6, 2010

Kansas Coliseum  
 Wichita, KS

**Jim's Model "A"**  
**Starter & Generator Repair**

Specializing in 12 Volt Starters  
 3456 Bonn, Wichita, KS 67217  
 (316) 943-7033

**SELECT-A-CAR**

**Donn Mason**  
 Owner

Sales Representative  
 Bucher Sales  
 300 S. Winfield  
 Rock, KS 67131

Phone: 316-393-3269  
 Fax: 316-722-6238  
 Email: [dgmason@sbcglobal.net](mailto:dgmason@sbcglobal.net)

**Dwayne E. Green, AAMS®**  
 Financial Advisor

**Edward Jones**  
 MAKING SENSE OF INVESTING

9747 E 21st St North  
 Suite 127  
 Wichita, KS 67206  
 Bus. 316-522-1787 TF. 800-290-0754  
 Fax 316-630-0634 Hm. 316-634-1482  
[www.edwardjones.com](http://www.edwardjones.com)



  
**Handy-Craft Services**  
 Economical, Reliable Service

**Richard Craft "Mr. FIX-IT"**  
 (316) 519-2232 cell  
[rcraft7@cox.net](mailto:rcraft7@cox.net)

\*Home & Appliance Maintenance  
 \*Lawn Sprinkler Design,  
 Installation & Winterization  
 \*Special Projects Design &  
 Construction

**HAYSVILLE**  
**SANDBLASTING**

2075 Emmett Haysville, KS 67060

FULL SERVICE SANDBLASTING

In Shop Phone: 522-6793 Commercial  
 Portable Residential

Wichita A's Model A Ford Club  
P.O. Box 25  
Wichita, KS 67201



Address Service Requested

---

### Wichita A's Model A Ford Club Contacts

**President,** Ed Giesen

president@wichitaas.com.....(316) 944-7554

**Vice President,** Jim Broadhead

vicepresident@wichitaas.com...(316) 943-7033

**Secretary,** Lenette Kottas

secretary@wichitaas.com.....(620) 896-7177

**Treasurer,** Bert Courtright

treasurer@wichitaas.com.....(316) 838-5950

**Tour Chairman,** Richard Kibbe

tourchair@wichitaas.com.....(316) 838-3452

**Swap Meet Chairman,** Frank Chenoweth (620) 584-6834

swapmeetchair@wichitaas.com

**Swap Meet Secretary,** John Stone

swapmeetsec@wichitaas.com...(316) 722-1779

**Newsletter Editor,** Linda Kibbe

editor@wichitaas.com.....(316) 838-3452

**Webmaster,** Darren Schuster webmaster@wichitaas.com

The Rumbleseat Review is the official publication of the Wichita A's Model A Ford Club, Inc, a local chapter of the Model A Ford Club of America and the Model A Restorers Club. It's purpose is to keep members informed of past, present and future events, activities, and club news. In addition, this newsletter includes articles and other information to aid in the restoration and enjoyment of the Model A Ford automobile.

This publication is mailed to members, prospective members and editors of similar publications prior to monthly meetings. Meetings are usually the fourth Monday of the month. Members may publish antique car related ads only for free of charge which includes items wanted, items for sale, or items for trade. We invite members to submit articles containing technical Model A information and other interesting tidbits for publication in this newsletter. Items to be published must be submitted to the newsletter editor by deadline shown in the calendar. Wichita A's membership dues are \$25.00 (new members) and \$20.00 (renewals), per year (October to September30). MAFCA dues are \$40.00 per year and MARC dues are \$38.00 per year. An advertisement in this newsletter is \$15.00 per year.