



# Rumbleseat Review



[www.wichitaas.com](http://www.wichitaas.com)

**WICHITA A'S MODEL A FORD CLUB**

Volume 30 Issue 7

P.O. Box 25, Wichita, KS 67201

August 2015

## August 2015

## September 2015

## October 2015

S	M	T	W	TH	F	S
						1
2	3	4	5	6	7	8
9	10	11	12	13	14	15
16	17	18	19	20	21	22
23	24	25	26	27	28	29
30	31					

S	M	T	W	TH	F	S
		1	2	3	4	5
6	7	8	9	10	11	12
13	14	15	16	17	18	19
20	21	22	23	24	25	26
27	28	29	30			

S	M	T	W	TH	F	S
				1	2	3
4	5	6	7	8	9	10
11	12	13	14	15	16	17
18	19	20	21	22	23	24
25	26	27	28	29	30	31

### August Refreshments

- ♦ Linda Kibbe
- ♦ Bonita Graham
- ♦ Doris Jean Ludlow
- ♦ Judy Hill
- ♦ Carolyn Nungesser

## CLUB TOURS & MEETING SCHEDULE

### August 2015

24..... Club Meeting at Minisa Park, 704 W. 13th ..... 7:00 PM

### September 2015

15..... Newsletter Deadline..... [editor@wichitaas.com](mailto:editor@wichitaas.com)..... Linda Kibbe

20..... Ice Cream Social..... Ludlows

25-27.. Men's Tour..... Ruggles

26..... International Model A Ford Day..... Grabendikes

28..... Club Meeting at Minisa Park, 704 W. 13th ..... 7:00 PM

### October 2015

4..... All Ford Day..... J Clark

26..... Club Meeting at Minisa Park, 704 W. 13th ..... 7:00 PM

### November 2015

7..... Mennonite Thanksgiving Dinner / Yoder..... Waller

27..... Club Meeting at Minisa Park, 704 W. 13th ..... 7:00 PM

### December 2015

5..... Ladies Christmas Luncheon..... Ellerman/Ruggles

13..... Club Christmas Party..... Adams/Kibbes

## WHAT'S INSIDE

Calendar	1
Meeting Minutes	2
President's Message	2
Future Tours and Events	3-4
Announcements	5-6
Wichita A's Dues	7
National Dues	8-9
Tech Talk	10
Era Fashion	11
Swap & National Calendars	12
Classified	13

## WICHITA A'S MEETING

July 27, 2015

President **Dennis Ellerman** called the July 27<sup>th</sup> 2015 meeting of the Wichita A's to order at 7:00 P. M. Guests **Bob and Karen Novak** were introduced. New members **Max Bahre** and **Shorty Hayes** were introduced. The minutes of the June meeting were approved as printed in the newsletter.

Treasurer, **Rex Kraus** reported on the club's finances. **Bonita Graham**, our Sunshine Lady reported the following: **Bob Bruce** is now taking Chemo medication orally for 30 days and getting a little stronger. **Dick Foote** is now at Wichita Avita Rehab Center and **Steve Boivin** is recovering after his stay in the hospital. **Bonita** thanked the club members for the support they received at the time of the **Graham's** daughter's passing.

Thank you notes were received from the **Floyd Long** family and the **Alzheimer's Association** as announced by **Dennis**.

**Brenda Broadhead** had no report for MARC and MAFCA. **Dennis** encouraged everyone to be sure and see **Brenda's** write-up in "The Restorer" and "Model 'A' News" magazines as he announced that she always did an excellent job. **Jim Nungesser** had no report from the Wichita Area Car Council. **Tom Ruggles** had no report regarding the Sunflower Charity Swap Meet.

**Dennis** took a vote from the club members to see if they would like a Christmas Party at the Prairie Rose Chuckwagon Dinner. There was enough interest to plan the event. It was announced that the cost would be \$25.00 per club member and a tentative date will be Sunday, December 13<sup>th</sup>. More will be announced in the coming months.

**Gary Hileman** gave the report on the 4<sup>th</sup> of July parade in Derby. There were 28 cars in the parade and a lunch was

enjoyed at the Warren retreat. 63 people enjoyed the fried chicken meal.

**Gilbert Adams** reported on the three day tour scheduled for August 14<sup>th</sup> thru August 16<sup>th</sup> to Marysville, KS. He announced that there was now four openings to be filled. The tour will leave from McDonald's at Meridian and 53<sup>rd</sup> Street North at 8:00 on the 14<sup>th</sup>.

There will be a sign-up sheet for the ice cream social at the August meeting which the **Ludlow's** will host as announced by **Doris Jean Ludlow**. This will be held on September 20<sup>th</sup>.

**Tom Ruggles** announced that the Men's tour would be September 25<sup>th</sup> thru the 27<sup>th</sup> and western Kansas would be the destination. The cost is \$5.00 plus lodging for the 25<sup>th</sup> and 26<sup>th</sup> to be in Liberal, KS.

**Don Grabendike**, who was not present at the meeting, will have information at a later date regarding the tour for International Model A Ford Day which is scheduled for September 26<sup>th</sup>.

It was announced by **Denny** that club dues will be due October 1<sup>st</sup> and membership was increased to \$25.00 per the board's decision.

The evening's refreshment were provided by **Bev Grant, Kay Lumbert, Linda Lumbert, Ruth Anne Praeger** and **Susan Stone**.

Vice President, **Randy Frazer** presented a video for the evening program entitled "How to Change Timing Gears" Meeting Adjourned.

The next meeting: August 24<sup>th</sup> 7:00 P. M.

**Joanna Adams**  
Secretary

## PRESIDENT'S MESSAGE

The end of August is drawing near and with that comes cooler weather. If your Model A is growing restless from hiding from the heat, start making plans now for adventures in the fall. September offers four club opportunities to get the Model A out of captivity. It's nice to go out in the garage to look at and tinker with our Model A's, but it's so much better to take a Model A for a drive and share them with everyone. I'm sure that we have all had the experience of answering questions and hearing the stories from people

we've met simply because we were driving the Model A.

If you haven't led a Club tour in a few years I would encourage you to consider showing the rest of us a point of interest that you've heard of. Visit with Don Grabendike our tour chairman extraordinaire. I'm sure he can give helpful hints to make it easy for you and enjoyable for all.

**Denny Ellerman**, President

The Wichita A's meet on the 4th Monday of the month with exception to the month of May and December. Due to Memorial Day Weekend in May, the meeting is held on the 3rd Monday of the month. We do not hold a meeting during the month of December. Other meeting changes will be published in the newsletter prior to the scheduled meeting. The meetings are held at Minisa Park, 704 W. 13th, Wichita, KS. Meeting time is 7:00 PM unless otherwise noted in the newsletter.

## FUTURE TOURS AND EVENTS



### Ice Cream Social Sunday, September 20, 2015

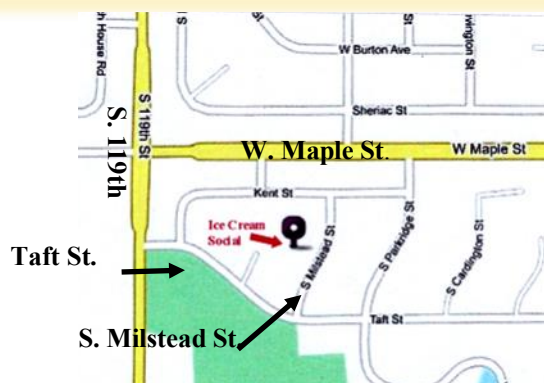


The **Ludlows** are having an Ice Cream Social on Sunday, 9/20/2015 at 6:00 PM.. Please bring lawn chairs, Ice Cream or desert. Table service will be furnished.

The address is 345 S. Milstead St., Wichita. If you are heading north or south on 119th St., turn on to Taft St., located south of Maple St., then turn left on Milstead St.

Information: **Darrell & Doris Jean Ludlow**

.....



### Men's Tour

**September 25-27, 2015**



Tour will begin Friday morning and return Sunday afternoon. Leave from McDonald's in Goddard at 8:00 am and travel west to Meade, Liberal, Hugoton and who-knows-where else. Lots of old cars, trucks, tractors, airplanes and miscellaneous rusty stuff to look at. Some roads are guaranteed to be unpaved and have been known to be muddy.

Overnight Friday and Saturday nights at Days Inn in Liberal. Call 620-626-7377 for reservations and mention Wichita A's. Rate is \$80.99 per night plus tax.

This tour is arranged by Tom Ruggles and Steve McLaughlin. Cost is \$5.00 per member, meals and lodging on your own. You can call Tom at 316-258-3234 or sign up at the August meeting.

**Tom Ruggles** .....

### International Model A Ford Day

**Saturday, September 26, 2015**

This year our tour will be a leisurely drive in the country. We will travel about 15 miles on dirt roads. There will be NO sign-up sheet, JUST SHOW UP. We will depart from the Sam's Club parking lot on west Kellogg at 8:00 AM.

**Don & Terry Grabendike** .....



### Club Christmas Party

**December 13, 2015**

The Model A Club Christmas Party will be held at the Prairie Rose Chuckwagon in Benton KS on Sunday, Dec. 13th starting at 12:00 noon, for those that want to be there early. There will be horse drawn rides, classic Christmas movies, a museum and gift shop. There is free popcorn and coffee during this time. At 1:15pm you will be seated and served at 1:30pm. This is an all-you-can-eat meal consisting of brisket, sausage, beans, roasted potatoes, biscuits, apple crisp and ice cream. After your meal you will be entertained by the Prairie Rose Rangers. This will end at approximately 4:00pm.

A sign-up sheet will be available at the August, September and October meetings with driving directions available if needed.

Cost for club members: \$25

Cost for nonmembers: \$35

Children ages 3-12: \$10 Children will be entertained with a movie while the program is in progress.

**Gilbert & Joanna Adams:** .....

**Richard & Linda Kibbe:** .....

#### DRIVING DIRECTIONS FROM WICHITA

Take Hwy K254 East Toward El Dorado  
(1 Mile East of Butler Co. Line)

Turn Left on Butler Road and Go 2 Miles North

Turn Right on Parallel Road and follow signs to  
Prairie Rose

## Ladies' Christmas Brunch December 5, 2015



The Ladies' Christmas Brunch will be on Saturday, December 5<sup>th</sup> from 9 - 11 a.m. We will meet at Color Me Mine at 2441 N. Maize Road for brunch and a ceramic painting party. You will get your own ceramic piece to paint which will be glazed and fired. The cost is \$10 per member and \$20 per guest. Due to space limitations, we are limited to 45 ladies, so be sure and sign up early. We can't wait to see how creative the Model A ladies can be.

**Claudia Ellerman and Dawna Ruggles**



## 2016 MAFCA NATIONAL CONVENTION

**Mile High Country Colorado  
is waiting for you...**

**When:** June 19-24, 2016

**Where:** Loveland, Colorado

**Why:** For a Great Model A Time in the Rocky Mountain State

**Hosted By:** Model A Ford Club of Colorado

Registration forms will be available in the January-February 2016 issue of "The Restorer" and on the website in January 2016. You can visit the following web sites for information.

**Web Site:** <http://www.milehighcountry2016.org/index.html>

**Tours:** <http://www.milehighcountry2016.org/tours.html>

**Seminars:** <http://www.milehighcountry2016.org/seminars.html>

**Hubley Derby:** [http://www.milehighcountry2016.org/Hubley\\_Derby.html](http://www.milehighcountry2016.org/Hubley_Derby.html)

**Hotels:** <http://www.milehighcountry2016.org/Hotels.html>

**Contact:** ModelA2016@gmail.com

## 2016 MARC NATIONAL MEET

### Attention all Wichita A's: "please note Denny's August 15th deadline"

The MARC National Meet for 2016 will be held in Toledo, Ohio June 27<sup>th</sup> thru July 1<sup>st</sup>. The event is being hosted by the "Sweet Sixteen A's" and I received a letter and a few raffle tickets from the club. They are trying to raise "seed money" for their national meet. The letter reads in part: "We will be raffling a rebuilt Model A engine (first prize) and a Model T style go-cart (second prize). Winning tickets will be drawn at the Banquet on Friday, July 1, 2016. Tickets sell for \$2 each or 3/\$5. We would like the members of your region to consider purchasing a ticket in advance to help us with some of our meet prep expenses."

I have confirmed that you need not be present to win, MARC membership is not required and that shipping or pick-up can be arranged. I presume that shipping would be at your expense not the Sweet Sixteen A's. I will accept verbal requests for the number of tickets you might like to buy until **12:00 noon August 15<sup>th</sup>**. You can call my cell @..... or our home @ .... I will order the tickets and have them for delivery at the August 24<sup>th</sup> club meeting.

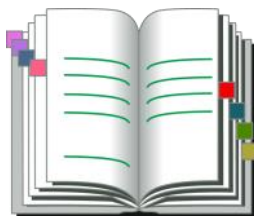
**Dennis Ellerman**

# ANNOUNCEMENTS



## September Birthdays

2	Karla Shepherd
4	Pat McHenry
5	Bill Shearer
6	Esther Stoss
10	Bill Brooks
10	Larry Cushenbery
10	Kent McIntyre
13	Debbie Grady
15	Bob Phye
17	Marvin Hamlin
18	Janice Zamecnik
21	Jackie Clark
21	Lavina Schroeder
21	Cory Unruh
23	Al Albers
24	Sondra Kester
24	Tim Straub
25	Paula McIntyre
27	Jim Clark
27	Jeannie Cole
28	Terry Grabendike
28	Joyce Guinty
29	Tom Waite
30	Maria Hildibrand



## ROSTER UPDATE New Address

**Otto and Ruth Anne Praeger**

.....  
Wichita, KS 67226

.....  
O: ..... RA: .....



## Congratulations!

**Jim & Lylia Clark**  
have a new granddaughter,  
**Zoe Grace Clark**, born  
7/21/15, 6 lbs 12 oz, 18".  
Parents are **Zac** and **Me-  
ghan Clark**.

## New Members

**Max & Anna Bahre**

.....  
Bel Aire KS 67220

.....  
'31 A

\*\*\*\*\*

**Robert & Karen Novak**

.....  
Andover KS 67002

.....  
K: .....

\*\*\*\*\*

**James & Janet Butler**

.....  
Wichita KS 67204

.....



## Thank You

Thank you guys for all  
the cards and calls and  
most of all your prayers.  
The best of friends and we  
miss you guys.  
**Steve & Linda Boivin**

## REFRESHMENT COMMITTEE

### September 2015

- ♦ Francis Grady
- ♦ Ruth Goodman
- ♦ Randy Frazer
- ♦ Peggy Chenoweth
- ♦ Trudee Harshfield

### October 2015

- ♦ Vicki Hildibrand
- ♦ Linda Cushman
- ♦ Glenda Sill
- ♦ Barb Phye
- ♦ Mike James

### November 2015

- ♦ Rex Kraus
- ♦ Jim Clark
- ♦ Alan Orr
- ♦ Fred Hilger
- ♦ Marcia Hillman



### Our Deepest Sympathy

Prayers of sympathy for **Lea Ann Standrich** and family in the observance of the death of her husband, **Bob Standrich** on July 27th. He was a club member.

\*\*\*\*\*

Prayers of sympathy for **Ann Toeppen** and family in the observance of the death of her husband, **Roger Toeppen** on July 14th. He was a former club member.

\*\*\*\*\*

Several of you knew **Harold Naber** from Peyton, CO. He visited our annual swap meets and attended our regional meets. In 2007, his granddaughter, who was 16 at the time, drove a Model A from back east to our regional meet. He attended our Saturday morning breakfast several times with **Wayne Orr**. He passed away on July 19, 2016.

We offer our sympathy to his wife, **Velma** and family.



### For Sale

36 inch Sand Blaster Cabinet.  
Darrell Ludlow  
(316) 721-9945



### Newsletter Deadline

Tuesday, September 15, 2015  
Tuesday, October 13, 2015



I'm in the market for a Model A Ford. I prefer a 1930 or 1931. Here is my preference list (prioritized)

- 1) Any coupe with rumble seat 1930 -1931
- 2) Any Fordor 1930 - 1931
- 3) Any Tudor 1930 - 1931

I'm looking for a good solid driver - something I can tinker with from time to time. A real show car would probably be out of my price range.

I prefer something with correct colors for the model and year. A car that has been changed to 12 volts or has had the brakes changed to hydraulic brakes would be OK also.

I very much prefer a car already registered in Kansas.

Thanks,

**James Butler**

316 253 1127 (cell phone)

\*\*\*\*\*

I am looking for a distributor for a 1930 Model A. I want one I can rebuild.

**Dennis Dye** (316) 308-7075

**CLUB DUES ARE DUE OCT 1st!**

It is that time again! **Wichita A's Club dues (\$25) are due October 1 (and Late December 15).** There is a form in this newsletter and also on the Wichita A's website: wichitaas.com. You may pay at the meeting or mail your dues to the club address on the form.

As you renew this year, **Please Mark whether you would like your newsletter e-mailed and/or sent in the mail.** A lot of Members are opting for the e-mail version (all in color) or even just reading it on the web-site. With the e-mail option you get it several days before the snail mail one gets to your home. We have a terrific newsletter – just let us know how you would like to receive it!!

**Also, update your info on the form & Make sure your name is on it!**

**Thanks – Susan Stone (membership)**

**WICHITA A'S MODEL A FORD CLUB – 2016**

(Oct.1 thru Sept. 30)

**ALL CLUB DUES** (Oct.1 thru Sept. 30) are **\$25.** \_\_\_\_**NEW** or \_\_\_\_**RENEWAL**

**PLEASE CHECK HOW YOU WOULD LIKE TO RECEIVE YOUR NEWSLETTER:**

\_\_\_\_ **ONLY E-MAILED**

\_\_\_\_ **ONLY MAILED HARD COPY**

\_\_\_\_ **BOTH E-MAILED & MAILED HARD COPY**

**Commercial Newsletter Ad (Enclose Business Card IF New or Updated)** \_\_\_\_\_ **\$25/ Year**

**NAME** \_\_\_\_\_ **BIRTHDAY (MO/ DAY)** \_\_\_\_\_

**SPOUSE'S NAME** \_\_\_\_\_ **BIRTHDAY (MO/ DAY)** \_\_\_\_\_

**ADDRESS** \_\_\_\_\_

**CITY** \_\_\_\_\_ **STATE** \_\_\_\_\_ **ZIP** \_\_\_\_\_

**HOME PHONE (IF want printed in roster)** \_\_\_\_\_

**MEMBER CELL (IF want printed in roster)** \_\_\_\_\_

**SPOUSE CELL (IF want printed in roster)** \_\_\_\_\_

**E-MAIL ADDRESS** \_\_\_\_\_ **Include me on the Club e-mail list? YES or NO**

**Model A Year & Body Style:** \_\_\_\_\_

**MAKE CHECKS PAYABLE TO: WICHITA A's**

**BRING TO THE CLUB MEETING OR MAIL TO:** WICHITA A'S  
P.O. BOX 25  
WICHITA KS 67201



## MODEL "A" RESTORERS CLUB

6721 Merriman  
Garden City MI 48135  
(734) 427-9050 office  
(734) 427-9054 fax

[modelarestorers@sbcglobal.net](mailto:modelarestorers@sbcglobal.net)

### Membership Application

#### 2016 Dues- New or Renewals

( ) US Membership \$45.00 ( ) US & Canada Air Mail \$55.00 ( ) International \$61.00

#### IMPORTANT:

Make checks payable to Model "A" Restorers Club (M.A.R.C.)

All Memberships from outside the U.S. are to be remitted by International Money Orders in U.S. Funds (drawn on U.S. Bank) or credit card. And a personal check drawn on U.S. bank (U.S. funds must stamped on check.)

#### CREDIT CARD INFORMATION:

( ) Visa ( ) Master Charge or ( ) Discover Credit Card ( ) American Express  
# \_\_\_\_\_

EXP Date \_\_\_\_\_ CVV2 Code # \_\_\_\_\_ Phone # \_\_\_\_\_  
(Last 3 numbers on back of Credit Card)

Membership # \_\_\_\_\_ E-mail \_\_\_\_\_

Name: \_\_\_\_\_

Address: \_\_\_\_\_

City: \_\_\_\_\_ State: \_\_\_\_\_ Zip: \_\_\_\_\_

I give permission to publish my phone number in the future MARC Membership Rosters:

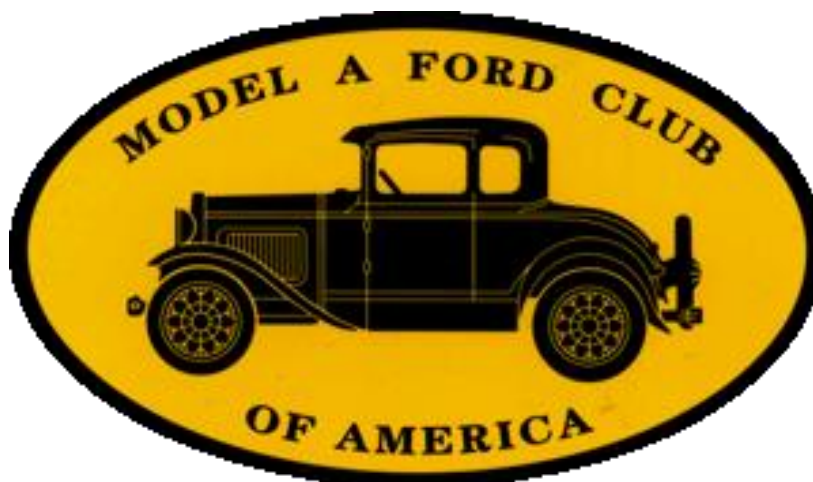
( ) Yes ( ) No Phone: \_\_\_\_\_

I give permission to publish my email in the future MARC Membership Rosters:

( ) Yes ( ) No Email: \_\_\_\_\_

With your membership you will receive a club membership I.D. card and the *Model "A" News*, our BI-monthly club magazine. In addition, each member is entitled to a free 40 word classified ad in each issue of our international publication, the *Model "A" News*  
(A good source of parts and information you may need for your car).





## Invitation To Join Model A Ford Club of America

### New Membership

Name \_\_\_\_\_

Spouse's Name \_\_\_\_\_

Address \_\_\_\_\_

City \_\_\_\_\_

State \_\_\_\_\_ Zip \_\_\_\_\_

Country \_\_\_\_\_ Telephone \_\_\_\_\_

Permission to publish my telephone number in future Membership Rosters? Yes: \_\_\_\_ No: \_\_\_\_

### Gift Membership

Name \_\_\_\_\_

Spouse's Name \_\_\_\_\_

Address \_\_\_\_\_

City \_\_\_\_\_

State \_\_\_\_\_ Zip \_\_\_\_\_

Country \_\_\_\_\_ Telephone \_\_\_\_\_

Permission to publish my telephone number in future Membership Rosters? Yes: \_\_\_\_ No: \_\_\_\_

Return this form and payment to:

**MAFCA**

250 South Cypress Street • La Habra, CA 90631-5515

### ~ Membership Benefits ~

*The Restorer* magazine • Technical Support • Local Chapters • National Meets • Era Fashion Guidelines • "How To Restore" Series • Restoration Guidelines and Judging Standards

Dues per year are

U.S. Membership – \$40

Canada/Mexico Membership – \$50

International Membership – \$56

Make checks or money orders payable to

**MAFCA**

U.S. Funds Only

### For Credit Card Orders ~

Visa / MasterCard (circle one)

Card Number:

Exp. Date: \_\_\_\_\_

Signature: \_\_\_\_\_

\_\_\_\_ Membership Only \_\_\_\_ Membership + Initiation Package

### Optional Initiation Package

#### For New Members Only

1 - Back issue of *The Restorer*

1 - MAFCA Lapel Pin

1 - MAFCA Decal

1 - Name Badge

Only \$10 extra



# Tech Talk

## Rotor Gap - Just as important as point gap

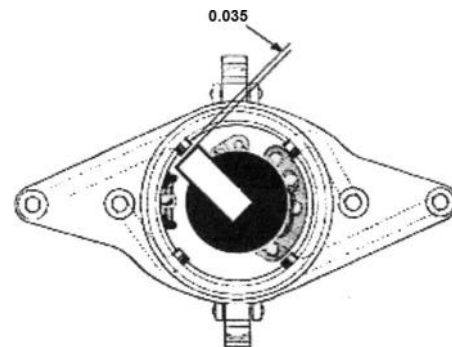
It is amazing how much time we put into setting breaker point gap to tune our Model "A's" to perfection, yet almost always ignore the gap between the rotor tip and the contact points in the distributor body.

On the last seven Model "A's" I looked at, the alignment of the rotor tip and contact points were not only skewed, but also too far apart. Admittedly, the voltage of the spark at this point has been increased tremendously by the coil, but as we know, air is a terrible conductor and the larger the gap, the more voltage it takes to jump it. Let's save the voltage for the spark plugs.

First check alignment of the tip to contact point with the distributor cap off. Remove the spark plug wires from the distributor body so that they will not put any tension on the body, thus cocking it. The flat, angled rotor tip should be horizontally straight across from the contact point, not higher or lower. If the center of the rotor tip is below the contact point in the distributor body, do not try to bend the tip up as this will either cause it to break off or will cause the rotor tip to not be parallel to the contact point. The solution is to cut some round shims, placing them inside of the rotor body between it and the cam screw until rotor tip alignment with the contact points in the distributor is correct. Remember to cut a notch in your shims to match the inside of the rotor body.

Next check the gap between the rotor tip and contact points on the distributor body. After years of polishing rotor tips and contact points, many of the Model "A's" I have checked had over a 0.060 gap. Try a new rotor and/or distributor body and bring the gap down to 0.035. This is where my "A" runs best at top speed. You can also build up the contact points with solder and then carefully file them back down to the correct gap. Rotors can still be bought through your local auto parts store as "Standard FD-15" or "NAPA SA3" for about \$1.80.

I hope these suggestions will help those who might be having top speed trouble or hard starting. That missing and sputtering may just be a 10-minute job to align and gap your rotor.



**How to Restore Your Model A, Volume 7**  
- Grape Country A's

*This was copied from the July 2015 issue of the Script "A" News.*





# ERA FASHIONS

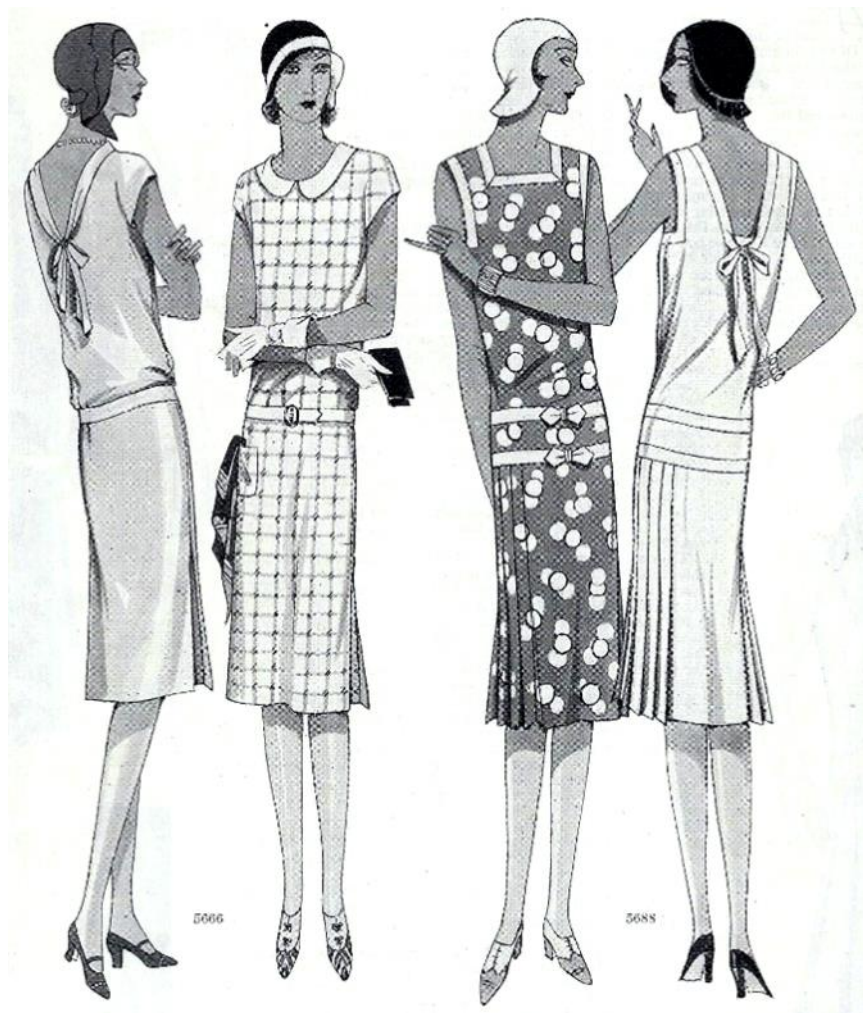
## L'ECHO DE PARIS

### SLEEVES DECIDE THE TYPE OF SUMMER SPORTS FROCKS

Sleeveless fashions offer a choice of different types in the new sports frocks. If one plays a great deal of tennis or wears little jackets to complete the sports ensemble, or if one's arms are very attractive with no sleeves whatever, the armholes of the sports frock are cut wide and emphasized by trimming bands. If one wants a frock for wear without a coat for every day and shopping as well as sports, one is smart in a sports frock with kimono sleeves.

No. 5666. Inverted pleats at each side supply fullness in a straight line frock with a suntan neck and short kimono sleeves.

No. 5688. Narrow bands trim the neckline, the armholes and the waistline of a tennis frock. The skirt is pleated at each side.

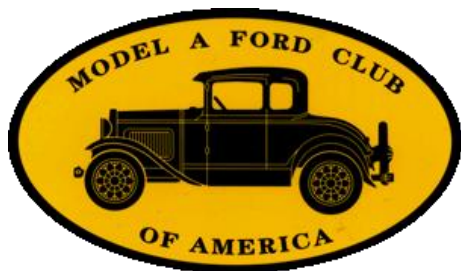


5666

5688

*Copied from August 1929 issue of McCall's magazine.*

## NATIONAL MODEL A CLUBS



### MAFCA

250 S. Cypress St.  
La Habra, CA 90631-5515  
[www.mafca.com](http://www.mafca.com)  
U.S. Membership Cost: \$40

The Wichita A's Model A  
Ford Club encourages  
members to join both  
National MARC and  
MAFCA Clubs.



### MARC

6721 Merriman  
Garden City, MI 48315  
<http://modelarestorers.org>  
U.S. Membership Cost: \$40

← For membership information you can  
check MAFCA and MARC web sites. →

## LOCAL AND NATIONAL CALENDARS

### 2015 –2016 SWAP MEET SCHEDULE

October 7-10, 2015.....	Hershey Region AACA Swap Meet.....	.....Hershey, PA
October 15-17, 2015....	Chickasha Swap Meet.....	.....Chickasha, OK
October 24-25, 2015....	16th Annual Swap Meet by Sedgwick Street Rodders.....	.....Hutchinson, KS
February 5-6, 2016.....	2016 Kansas Sunflower for Charity Swap Meet at KS Pavilions.....	.....Park City, KS
March 17-18, 2016.....	Chickasha Pre-War Swap Meet.....	.....Chickasha, OK
April 28-May , 2016.....	Pate Swap Meet.....	.....Fort Worth, TX
May 11-14, 2016.....	Chickasha Spring Swap Meet.....	.....Chickasha, OK
June 14-18, 2015.....	Petit Jean Swap Meet.....	.....Petit Jean, AR
June 25-26, 2016.....	Swap Meet Fremont.....	.....Fremont, NE
July 7-9, 2016.....	Iola Old Car Show & Swap Meet.....	.....Iola, WI

### 2015 - 2017 FUTURE REGIONAL & NATIONAL MODEL A MEETS

December 2-5, 2015.....	MAFCA National Awards Banquet.....	.....Medford, OR
April 7-9, 2016.....	MARC Membership Meet.....	.....Flint, MI
June 19-24, 2016.....	2016 MAFCA National Convention.....	.....Loveland, CO
June 25 - July 1, 2016.....	MARC National Meet - Sweet Sixteen Region.....	.....Perrysburg, OH
September 19-22, 2016.....	MARC National Tour Hudson Valley Region.....	.....Newburgh, NY
December 5-8, 2016.....	MAFCA National Awards Banquet.....	.....Reno, NV
June 5-9, 2017.....	Omaha Regional Meet.....	.....Omaha, NE
September 10-17, 2017 .....	MAFCA National Tour - Pacific Northwest Tour.....	.....Lions Gate Model A Club





**BRASSWORKS**  
Aries Mufflers

New and Used Antique Parts  
**MILT'S MODEL 'A' REPAIR, PARTS & SALES**  
F.S. Modern Ignitions • Mitchell Overdrive  
Overdrive & 4-Speed Transmissions Installed

806 W South Avenue S  
Blue Springs, MO 64015  
hesfrt@sbcglobal.net

**Milton Hessefort**  
816-229-1949  
Cell 816-590-4317

*Powder Coating Services*

A Division Of

**LORAC COMPANY**

"FOR A DURABLE OVEN-CURED FINISH"

Motorcycle & Auto • Lawn Furniture • Hobbyist  
Manufacturers • Aviation • Agriculture • Many Others

**Sandblasting Facilities**

316-263-2565 • 800-554-0144 • Fax 316-263-5181

MITCH HERRING  
COATINGS MANAGER

624 E. Harry  
Wichita, KS 67211-4205

**McCurdy**  
AUCTION LLC

**REAL ESTATE SPECIALISTS**

12041 E. 13<sup>th</sup> - Wichita, KS - 67206 • 316.683.0612

visit us at [McCurdyAuction.com](http://McCurdyAuction.com)

**CENTRAL—MIDWEST MEET**

June 8-12, 2015

St Joseph, MO

June 8-12, 2015

Host: Northwest Missouri  
Model A Ford Club



**RAY HARSHFIELD**

Office: (316) 942-1925

Fax: (316) 943-1311

Cell: (316) 305-1705

[www.wichitagoldkey.com](http://www.wichitagoldkey.com)

**GOLD KEY**

REALTORS®

3535 W. 13th  
Wichita, KS 67203



**1 DAY REPAIR**  
Don Grabendike  
30 years experience!  
Ph: 838-1765  
License #2763

**ELLERMAN SPEEDOMETERS**

STEWART-WARNER FOR  
FORD MODEL A  
OVAL OR ROUND  
RESTORATION



DENNIS ELLERMAN  
316.722.2107 OR  
316.765.1506

[ELLERMAN SPEEDOMETERS@COX.NET](mailto:ELLERMAN SPEEDOMETERS@COX.NET)

**The Model "A" Medic LLC**

New and Used Model A Ford Parts.  
Specializing in Full Service Repairs & Restorations.  
Free Parts Delivery to Local Events and Monthly  
Club Meetings!!!!

If you are looking for a Insured, Professional Shop to do your  
Model A Restoration, The Model A Medic is the place!  
Eric Weninger 2045 S Bedford St., Wichita, KS 67207  
(316) 619-1821 Monday - Friday 9am - 6pm CST  
[www.modelamedic.com](http://www.modelamedic.com)

**Clarence Howland**

1911 Briarcliff  
Emporia, Kansas 66801

BUY - SELL - TRADE  
Antique Cars and Parts

Cell: (620) 341-3533  
Home: (620) 342-0215



**MARC NATIONAL MEET**

June 21-26, 2015

Niagara Falls, Ontario, Canada

Host: Canadian MARC



**WALLACE W. WADE  
SPECIALTY TIRES**

530 Regal Row  
Dallas, Texas 75247  
(214) 688-0091  
Fax (214) 634-8465  
1.800.666.TYRE  
[www.wallacewade.com](http://www.wallacewade.com)  
[wallacewade@earthlink.net](mailto:wallacewade@earthlink.net)

**SPECIALTY TIRE DISTRIBUTOR**

"IF WE DON'T HAVE IT — WE'LL GET IT"

**Vintage Tires**

ANTIQUE & CLASSIC  
CARS - TRUCKS  
MILITARY - TRACTORS

**WALLACE W. WADE**

1 800 666 TYRE

*We've got your*  
**COLLECTOR CAR COVERED**

JAMES & JUDI SHARP  
1721 E OSAGE, SUITE 100  
DERBY, KS 67037  
(316) 788 5257

Fueled by:



Collector Car Insurance

**B&B Electric Motor Co.**  
Your One Stop Industrial Service Center

**New • Repair • Rewind  
Electric Motors • Pumps**

Phone (316) 267-1238 • 1-800 499-1238  
Fax (316) 267-0599 • Emergency (316) 641-0806  
email: [bbemc@msn.com](mailto:bbemc@msn.com) • [bbelectricmotor.com](mailto:bbelectricmotor.com)

332 Lulu  
Wichita, KS 67211

**Ed Giesen**  
Customer Service

**Z Model A Parts - Zanes**

Ron and Sondra Kester, Owners

773 Central Street

Glade, Kansas 67639

Phone: 785-543-6729

Fax: 785-543-3013

e-mail: [2officegirls@ruraltel.net](mailto:2officegirls@ruraltel.net)

**JIM'S MODEL "A"**

**Starter & Generator Repair**

**Specializing in 12 Volt Starters**

10405 W. Bartlett St, Wichita, KS 67212  
(316) 943-7033

**MAFCA NATIONAL  
CONVENTION**

July 19-24, 2016

Loveland, CO

Host: Model A Ford  
Club of Colorado

**MARC NATIONAL MEET**

June 25-July 1, 2016

Perrysburg, OH

Sweet Sixteen Region

**Wichita A's Club Meeting**

Minisa Park, 704 W. 13th. N

Meeting Starts 7:00 PM

4th Monday of each month except  
the month of May.

No Meeting in December



Wichita A's Model A Ford Club  
P.O. Box 25  
Wichita, KS 67201



Address Service Requested

### Wichita A's Model A Ford Club Contacts

**President**, Dennis Ellerman

[president@wichitaas.com](mailto:president@wichitaas.com).....

**Vice President**, Randy Frazer

[vicepresident@wichitaas.com](mailto:vicepresident@wichitaas.com)....

**Secretary**, Joanna Adams

[secretary@wichitaas.com](mailto:secretary@wichitaas.com).....

**Treasurer**, Rex Kraus

[treasurer@wichitaas.com](mailto:treasurer@wichitaas.com).....

**Tour Chairman**, Don Grabendike

[tourchair@wichitaas.com](mailto:tourchair@wichitaas.com).....

**Membership**, Susan Stone

[membership@wichitaas.com](mailto:membership@wichitaas.com).....

**Newsletter Editor**, Linda Kibbe

[editor@wichitaas.com](mailto:editor@wichitaas.com).....

**Webmaster**, Darren Schuster

[webmaster@wichitaas.com](mailto:webmaster@wichitaas.com)

The Rumbleseat Review is the official publication of the Wichita A's Model A Ford Club, Inc., a local chapter of the Model A Ford Club of America and the Model A Restorers Club. It's purpose is to keep members informed of past, present and future events, activities, and club news. In addition, this newsletter includes articles and other information to aid in the restoration and enjoyment of the Model A Ford automobile.

This publication is mailed or emailed to members, prospective members and editors of similar publications prior to monthly meetings. Meetings are usually the fourth Monday of the month. Members may publish antique car related ads only for free of charge which includes items wanted, items for sale, or items for trade. We invite members to submit articles containing technical Model A information and other interesting tidbits for publication in this newsletter. Items to be published must be submitted to the newsletter editor by deadline shown in the calendar. Wichita A's membership dues are \$25.00, per year (October to September 30). MAFCA dues are \$40.00 per year and MARC dues are \$45.00 per year. A business card advertisement in this newsletter is \$25.00 per year.