



# Rumbleseat Review



[www.wichitaas.com](http://www.wichitaas.com)

**WICHITA A'S MODEL A FORD CLUB**

Volume 33 Issue 4

P.O. Box 25, Wichita, KS

April 2018

## April 2018

S	M	T	W	TH	F	S
1	2	3	4	5	6	7
8	9	10	11	12	13	14
15	16	17	18	19	20	21
22	23	24	25	26	27	28
29	30					

## May 2018

S	M	T	W	TH	F	S
		1	2	3	4	5
6	7	8	9	10	11	12
	14	15	16	17	18	19
20	21	22	23	24	25	26
27		29	30	31		

## June 2018

S	M	T	W	TH	F	S
					1	2
3	4	5	6	7	8	9
10	11	12	13	14	15	16
17	18	19	20	21	22	23
24	25	26	27	28	29	30

## April Refreshments

**Beverage**  
Joanna Adams  
**Treats**  
Susan Stone  
Carol Diaz  
Donna Hileman  
Sheila Orr

## CLUB TOURS & MEETING SCHEDULE

### April 2018

21..... Scavenger Hunt (Rain Date 4/23).....Adams  
23..... Club Meeting at Minisa Park 704 W. 13th.....7:00 PM

### May 2018

4..... Newsletter Deadline..editor@wichitaas.com.....Sheila Orr  
5-6..... Great American Road Trip.....James  
5-6..... Kansas White Way Highway.....Hileman  
19..... Salina Car Museum.....Cushenbery  
21..... Club Picnic/Home of Steve & Jane McLaughlin....Sharp

### June 2018

3-8..... Midwest Regional Meet.....Springfield, MO  
8..... Newsletter Deadline...editor@wichitaas.com.....Sheila Orr  
10..... All Wheels Day/Lake Afton.....Clark  
16..... Adams Party.....Adams  
24-30..... MARC National Meet/A Dancin' In Branson.....Branson, MO  
25..... Club Meeting at Minisa Park 704 W. 13th.....7:00 PM

## WHAT'S INSIDE

Calendar	1
Meeting Minutes	2
Announcements	3
Future Tours	4-5
Past Tours	6-7
National Clubs Info	8-9
Talk Tech	10
Era Fashions	11
Swap Meet & Natl Sched	12

The Wichita A's meet on the 4th Monday of the month except December. We do not hold a meeting during the month of December. Other meeting changes will be published in the newsletter prior to the scheduled meeting. The meetings are held at Minisa Park, 704 W. 13th, Wichita, KS. Meeting time is 7:00 PM unless otherwise noted in the newsletter.

## WICHITA A'S MEETING MINUTES

### Minisa Park, March 26, 2018

President **Randy Frazer** called the March 26, 2018 club meeting to order. Bruce Evans was our only guest. **Gary Hileman** moved and it was seconded and passed to approve the February minutes as printed in the newsletter. Treasurer **James Sharp** updated the club on our finances. It was announced that **Jim Nungesser** has earned the 40,000 mile driving award but he wasn't present to receive it.

**Bonita Graham** reported that **Roger Grube's** mom had passed away. A card was passed around to sign for the **Schroders** and **Doris Jean Ludlow** thanked the membership for all the cards she had received for her birthday.

**Jim Broadhead** reported there were 20 cars on the Shake-Down Tour of March 24 and they had no major problems.

Future tours were discussed: Arched Cellar Bus Tour on April 7-8-**Linda Kibbe**, Scavenger Hunt on April 21-**Gilbert Adams**, White Way Highway Tour on May 5-6-**Gary Hileman**, the Great Kansas Road Trip on May 5-6-**Mike James**, and the Salina Car Museum on May 19th.

Following refreshments provided by **Barb Phye**, **Arley Bennett**, **Norma Agard** and **Glenda Sill**, **Jim Broadhead** presented a program on the Model A electrical system.

Announcement: The next club meeting will be April 23rd.

Meeting adjourned  
Dawna Ruggles, Secretary

## PRESIDENT'S MESSAGE

If you like a Varsity in weather, then spring in Kansas has not disappointed! For those of us that went on the Arched Cellar Tour, we had snow, we had sunshine, we had rain, but most of all we had fun!! If you missed the fun don't be sad as there are many more opportunities coming soon to get out and enjoy the cars and fellowship that can only be had in a Model A Ford. Be sure to read the entire award winning newsletter so you don't miss any of the great activities coming up. We look forward to seeing you on the road soon, just be sure to pack snow shoes, a rain coat and a swim suit! Chances are you will need all three on any given trip. This is Kansas after all!!!

Best Regards,

**Randy Frazer**, President

## NOTE FROM THE EDITOR

Touring season is in full swing and hopefully the weather will be warming up a bit! A big Thank you to Linda Kibbe and Richard too! They have both been very helpful while I am learning and also for articles they have contributed. Again, if anyone would like to share their knowledge, I would love to have a member write a Tech article for the Rumbleseat! It does not have to be every month, so please let me know if you are interested. Get your cars out and get ready to GOOOOOOOO!

**Sheila Orr**, Editor

# ANNOUNCEMENTS



## May Birthdays

- 2 Sue Johnson
- 3 Jane McLaughlin
- 3 Ron Eyres
- 9 Mary Hilger
- 12 Eric Weninger
- 13 Garry Brashear
- 13 Tony Pezzola
- 14 Greg Rau
- 15 Scott Guinty
- 15 Ron Kester
- 16 Kat Arnold
- 18 Don Waller
- 19 Milton Hessefort
- 21 Kim Slater
- 22 Judy Hill
- 23 Jackie Barnes
- 26 Ron Little
- 26 Hazel Roberts
- 27 Shirley Albers
- 28 Karolyn Wendt

Thank you to our Wichita A's Family for the food, cards and attendance at our Mother, Dorothy Tuttle's Memorial Service after her passing. She always enjoyed attending the club functions and the warm reception she received.  
**Jim and Brenda Broadhead** and family.

Prayers of sympathy for **Bob Giesen** and **Ed & Kim Giesen** & family in observance of the death of **Feryl Giesen** (Bob's wife and Ed's stepmother).



## WANTED

Model A parts wanted:  
Late 31 slant windshield dash rail  
Late 31 cowl band  
Contact: **Shorty Hayes**

## Roster Update Aaron & Laura Frazer

.....  
McPherson, KS 67460-5805  
A: .....



## WANTED

If you have an extra 1930-31 deck lid Please contact : **Gary Hileman** at .....



## MARC MILEAGE AWARD

**Jim Nungesser** received the MARC Mileage award for driving his 1931 Town Sedan 40,000 miles!  
**Congratulations!!**

## MAFFI Brick Collection



March club meeting donations brought us to a current balance of \$99.91.

**Denny Ellerman**



## Refreshment Committee

## Newsletter Deadline

Friday, May 4, 2018  
Sheila Orr  
editor@wichitaas.com or  
.....

May  
Is  
Club  
Picnic

**June 2018  
Beverages**  
Judi Sharp  
  
**Cookies or Treats**  
Judi Sharp  
Rex Kraus  
Shorty Hayes  
Lenette Kottas

**July 2018  
Beverages**  
Claudia Ellerman  
  
**Cookies or Treats**  
Trudee Harshfield  
Dale Hellar  
Michael Halfman  
Gil Adams

## MARCH PROGRAM



The program for the 2018 March meeting of the Wichita A's featured **Jim Broadhead** providing attendees with an overview of the Model A electrical system. The program was well received as evidenced by the numerous questions and discussion following Jim's presentation. A special "shout out thank-you" is owed to Mr. Al Stanley with the Albuquerque Poco Quartos Model A club for loaning the Wichita A's his electrical system mock-up board.

## FUTURE TOURS

### Scavenger Hunt

If you would like to take part in the Scavenger Hunt please call **Gilbert** at 316-838-8420 by the **19th** if you did not sign up at the meeting or show up at McDonald's at 53rd & Meridian at 8:30. I would like to have a final count by the 19th.

#### Scavenger Hunt

When: April 21st (Rain Date April 28th)

Where: Meet at McDonalds at 53rd and Meridian at 8:30

Tour leads: **Gilbert & Joanna Adams** ph: .....

Gilbert Adams will give you instructions on what to find

Meet back at Spears on West Maple at 1:00 for lunch and prizes. 1st, 2nd, and 3rd prizes + plus participation gift.

**Lunch is on your own**

### Kansas White Way Highway

When: May 5-6 2018

Explore the Kansas White Way Highway-More information to come!

Tour Leaders: Hileman's at .....

### Salina Car Museum

When: May 19, 2018

We will leave at McDonalds at 53rd and Meridian at 8:00 AM (come earlier if you want to have breakfast). Then off to Salina. **There is NO COST** for the tour. **Lunch on your own.**

Tour leaders: Cushenbery's ph:..... Clark's ph: .....

More information to follow

## FUTURE TOURS

### Big Kansas Road Trip

The Big Kansas road trip is fast approaching-May 5/6, 2018. The weekend will be an opportunity to experience the inaugural event organized by a group of tourism people and Kansas Explorers and follows on the last Kansas Sampler Festival. The Big Kansas road trip will be exploring the three counties of Barber, Comanche and Kiowa. The Wichita A's will add a degree of "old time festivity" to the weekend with visits planned at the following sites: Drive through the Gyp Hills, Medicine Lodge, KS Stockade & Carrie Nation Home, Wilmore Carousel, Big Well, Kiowa County Historical Museum, Twilight Theater and Fromme-Birney Round Barn

WHEN: Saturday/Sunday, May 5 & 6, 2018

Where: Meet at Phillips Filling Station K42

11012 W SE Blvd

Time: Depart -7:30 AM

Trip Leads: **Mike & Kathy James**

Ph: .....

Hotel: Best Western Inn

515 W. Kansas Ave.

Greensburg, Ks

670-723-2244

Reservation: Model A Club

Price: \$89.99 + tax = \$103.94 includes breakfast

Big Kansas Road trip price: \$10.00 per person

Non-member price: \$25.00

Price includes: admission to Carry Nation museum, Picnic in Wilmore, Big Well Tour and more



Sign up's will be accepted through Monday evening at our regular scheduled club meeting, April 23, 2018



**Come join us on the first ever  
BIG KANSAS ROAD TRIP  
And experience the  
Wilmore Kansas Carousel**

## IT'S PICNIC TIME!



### WICHITA A'S PICNIC TIME

WHEN: MONDAY MAY 21, 2018

TIME: 6:00PM

WHERE: **STEVE & JANE MCLAUGHLIN**

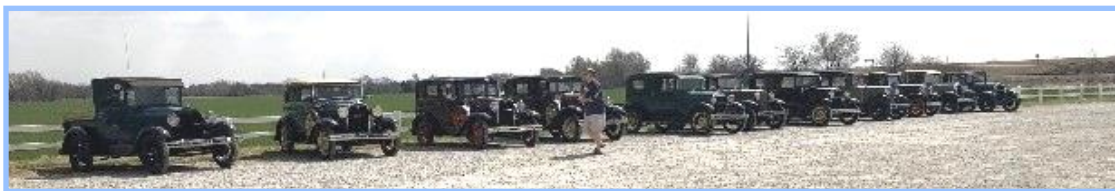
.....  
CHENEY, KS

WHAT TO BRING: SIDE DISH OR DESERT AND LAWN CHAIRS

**THE CLUB WILL BE PROVIDING THE HOT DOGS**



## Shakedown Tour



Before leaving **Bonita Graham, Donna Hileman and Jeannie Rau** enjoyed visiting!



Our leader, **Jim Broadhead**, giving instructions and checking his list.



## Kauffman Museum



Kauffman Museum director talking to our club.



**Bob Phye & Richard Sanchez** touring the museum.



**Richard Kibbe** standing in front of log cabin at Kauffman museum.



**Mike Hildibrand & Eric Weninger** at the museum.



The group enjoying dinner at Carriage Crossing!



**Jim Broadhead** organized this fun filled 120 mile tour. We met at McDonalds at 53rd and Meridian before leaving at 9:30 am for our Shakedown Tour. In Newton, Ks we toured the Kauffman Museum which gave us the history of Mennonites coming to Kansas and their early life before and after arriving. From there we drove to Yoder to have lunch at the Carriage Crossing.

There were approximately 41 people with 22 Model A's that drove on this tour. The weather was windy but otherwise a perfect Model A day. No breakdowns were reported but **Bob Beaver** lost a bolt on his luggage rack on the way to McDonalds which he wired up to stay in place.

JB & LMK



## ARCHED CELLAR TOUR

On April 7th the cold weather played a big part in this tour but snow, rain, wind and sunshine did not stop 5 Model A's from driving on this tour. 7 modern cars also made the trip. We arrived at The Volland Store for lunch and were given a tour of an number of the arch cellars that the early German settlers constructed out of the native stone. Some people lived in them until they built their house. We toured several cellars, on private properties, around Alma, KS. After the tour we drove to Topeka for the night.

The following morning we toured Ron Lessman's Truckhenge at his farm in Topeka. He gave us a personal tour of his Truckhenge, Boathenge, the artwork he created on bed sheets, etc., and his Quonset house he built which measures 50' wide by 80' long and 24' tall. It is a 2 story 96,000 square feet building with the living quarters on the top floor and garage and storage are on the ground floor.

It started snowing when we left his place. The snow turned into rain on the way home. All the Model A's made the trip without any problems. LMK



5 Model A's made the trip.



**Arley & Lonnie Bennet** are doing a little shopping at the store.



**Ray & Rita Hoffmans** viewing the artwork at "The Volland Store".



Bus full for the tour.



**Darrell Ludlow & James Sharp** entering a cellar.



**Steve McLaughlin, Darrell Ludlow**

Touring one of the many cellars.



Truckhenge



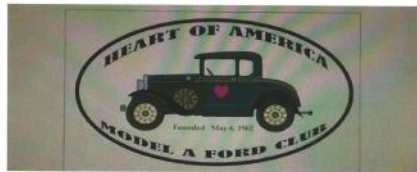
**Lenette Kottas** painting her name on one of the boats.



Truckhenge Quonset house.

## Springfield Regional Meet

Information for the Springfield Regional Meet, June 3 - 8, is **now available on the website**, including the registration forms and events. In the event that you do not have access to a computer, please feel free to contact **Sheila Orr** at 207-8878 and I would be glad to print you a registration form. You can visit this web site: <http://www.kcmodela.com> for complete activities



Your Host Will be Heart of America  
Model A Ford Club.  
Regional Director: Lance Burton  
816-809-8648.  
[grandpaburton@aol.com](mailto:grandpaburton@aol.com)

**2018 Model A Regional**  
**Springfield Mo. June 3-8**  
**A's In The Ozarks**



### A Short History of the Model A Ford

The year was 1926. Henry Ford's "Tin Lizzie" was getting old. It had been produced since October 1st 1908. There had been very few major changes to the car even though it did look quite different. With his son Edsel pushing to move past the Model T and design and build a "new Ford" the order was finally given on July 20, 1926 to start work on a new Ford, the "Model A", although that name had not been picked yet!

Henry made the last Model T on May 26, 1927. It was car No. 15,000,000. It is said Henry spent \$100,000,000 (Yes, 100 Million Dollars!) on the new car design and for retooling of the Rouge plant to build the new Model A. Quite a sum in the 1920's! The car contained over 6800 parts whereas the Model T only contained about 5000.

Model A No. 1 rolled off the production line Oct. 20, 1927 but public didn't see the car until Dec. 2, 1927. Unlike the Model T, the new Ford came in seven body styles and an amazing four colors!

The engine was an L-head 4 cylinder, 'cast en bloc' type. It had a 3-7/8" X 4-1/4" bore and stroke with a displacement of 200.5 cubic inches. SAE horsepower of 24.03 with brake horsepower rated at 40 at 2200 rpm. Typical gas mileage was between 20 and 30 mpg using a Zenith one barrel carburetor. It's a 103.5 wheelbase rode on 4.50 X 21" tires with a gear ratio of 3.77:1. The transmission was a 3 speed sliding gear unit with 1 speed reverse. The Model A had 4 wheel mechanical brakes and Houdaille, double action hydraulic shock absorbers with semi-elliptic front and rear transverse springs. Top Steel Spoke Wheels, Dash Light, Mirror, Windshield Wiper, Oil Gauge, Gasoline Gauge, Rear and Stop Light, Speedometer, Tools and Pressure Grease Gun.

The "Model A" Tool kit included with each car had the following items: Adjustable wrench, 2 open end wrenches, 2 tire irons, jack, pliers, screwdriver, tire pump, grease gun, combination spark plug wrench and head bolt wrench and instruction book which all fit into a Snap Pouch.

As for the price, the new Model A Tudor Sedan sold for \$495 with the Fordor bringing \$570 F.O.B. Detroit. For \$385 you could get a Roadster and \$395 would get you a beautiful Phaeton. At \$495, the new Ford Coupe was nice but for \$550 the Sport Coupe with a standard Rumble Seat was a hot seller.



## MAFFI NEWSLETTER MINUTE

April 2018

There has been some recent redecorating in the Parts Department of the Museum. There had been a donation of 4 framed color drawings and John Marshall was inspired by those to recreate the "New" signs as seen in the photos. Once those were done, they were hung alongside the donated drawings, reframed and looking like the original pictures.

We are always striving to keep our museum fresh and new for those returning to the museum for another look and especially for those who are coming for the first time. If you have been thinking about a trip to the museum, why not make plans to join us for Model A Day, September 15, 2018. If you can't make it for Model A Day, the museum is open 7 days a week. Anytime you happen to be in the area, come by for a visit.

Thank you for your continued support of the Model A Ford Foundation by both item donation and monetary support.

Marsha Quesnel  
MAFFCA Trustee



## 2018 MARC NATIONAL MEET

Information for the 2018 MARC National Meet in Branson, MO , June 24-July 1, **is now available on the website**, including registration forms and events . In the event you do not have access to a computer, please feel free to contact **Sheila Orr** at 207-8878 and I would be glad to print you a registration form. You can visit this web site: [www.modelarestorers.org](http://www.modelarestorers.org) for complete activities Those of you who receive the Model "A" News, from MARC, have an insert with the registration form.



## MARC & MAFCA MEMBERSHIP

**Want to join or re-new MAFCA or MARC online?**

**MARC membership form on line at:** <http://model-a-ford.org/?wpsc-product=membership>

**MAFCA membership form on line at:** [https://mafca.com/cart/index.php?mafca\\_new\\_member=yes](https://mafca.com/cart/index.php?mafca_new_member=yes)

If you are not a member of MAFCA or MARC and would like to be, now is the time. We can get a free MAFCA brick for three memberships. Contact **Dawna Ruggles** for the forms and more information. Kill two birds with one stone-get a great magazine and help us honor one of our members by getting a brick.

# Tech Talk

## It Stalls at a Stop

by Tom Endy

This is a common complaint often heard from Model A owners. My experience has been that it has to do with the Zenith carburetor. On most forums numerous theories are offered; many of them contradictory.

Every once in a while I encounter a Zenith that defies being fixed so that it does not stall at a stop. It can be very frustrating. However, I think I may have hit upon the problem.

I recall attending a Zenith seminar years ago at a MAFCA meet conducted by Herman Reise, who was an old fellow since passed away, that knew quite a bit about Zenith carburetor restoration. He made a statement that stuck in my mind. He said that "there hasn't been a decent throttle plate produced in 50 years". Unfortunately he did not elaborate.

Occasionally I find a throttle plate where someone has filed a groove in it right where it approaches the hole in the throat of the carburetor for the idle circuit. I have never figured out why this is done. I think that doing this would upset the flow of the proper amount of air to the idle circuit.

Snyder's Model A catalog has an interesting statement concerning the reproduction throttle plate they offer. "Made of brass as original with correct angles on the edges. USA".

Recently I was rebuilding two Zeniths that road tested perfectly until I came to a stop, then the engine stalled. Nothing I did to the Zeniths resolved the problem. The float level was set to different heights a number of times, the throttle shaft was replaced, the throttle bosses re-bushed, the float replaced. The float valve was replaced with a Viton tip. Flow tested jets installed. All the passage ways were open. It was then I began to think about the throttle plate itself.

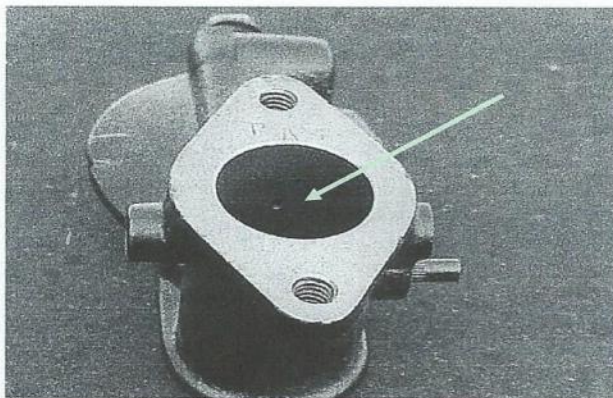
If the throttle plate does not close on the idle circuit hole in the throat properly it could adversely affect the flow of air to the idle circuit and the transfer from run to idle would be disrupted.

Maybe old Herman was on to something. Maybe back in the J.C. Whitney days the Model A Kingdom was flooded with throttle plates with the angles not ground correctly, that has continued to the present day.

I ordered two throttle plates from Snyder and installed them in the two Zeniths that both stalled when coming to a stop. **Problem resolved!**

This was quite a revelation. It could be that there is a multitude of incorrectly ground throttle plates floating around, or it could be that some of the originals that have survived have become worn such that they do not close on the idle hole properly.

Whatever is the case, when rebuilding a Zenith I will be installing new throttle plates from Snyder. I suspect some of the other better suppliers, such as Bratton's, are offering the same throttle plate. However they don't say so in their catalog.

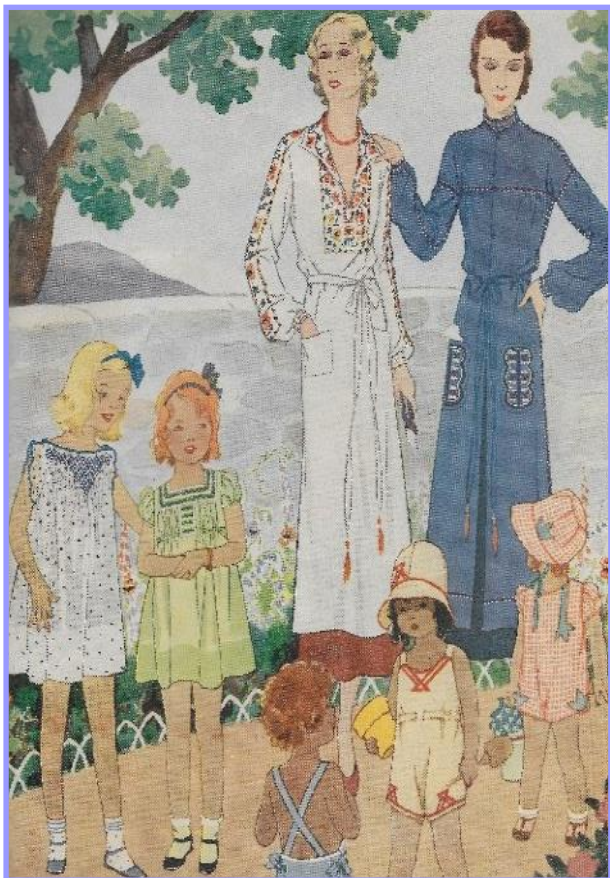


The small hole in the throat of the upper casting allows air to flow into the idle circuit when the throttle is closed. The throttle plate closes such that half of the hole just peeks above the closed throttle plate.



## ERA FASHIONS

### Smart Garments Are Hand Finished



1887      1888      1890      1885      1890      1886      1889

No. 1887. A frock for warm afternoons—charming in dotted swiss, organdy or crepe! Deeply pointed, the smocked neck terminates in pretty scalloped arm-holes.

No. 1888. The cunning fagoted yoke of rickrack braid is a chic part of this dainty frock with puff sleeves and a sash that ties smartly at the back.

No. 1885. A Russian smock with gay peasant cross-stitch on the yoke and sleeves is an essential part of the smartest summer wardrobes.

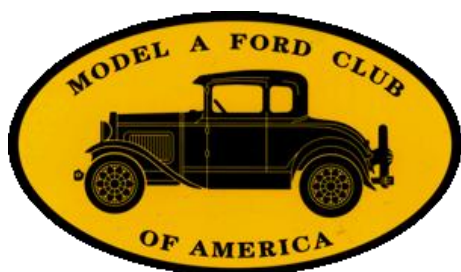
No. 1890. Colored bias tape provides an effective trim for this belted sun suit that terminates in tiny bows. The brimmed hat matches.

No. 1886. Simple wool embroidery distinguishes this charming yoked smock. The high neck may be worn either open or closed.

No. 1889. This cunning puff sleeved creeper for the very young, is trimmed in simple applique, and has a smart brimmed bonnet to match.

*Copied from the Summer 1931 Issue of the McCall Decorative Arts magazine.*

## NATIONAL MODEL A CLUBS



### MAFCA

250 S. Cypress St.  
La Habra, CA 90631-5515  
[www.mafca.com](http://www.mafca.com)  
U.S. Membership Cost: \$50

The Wichita A's Model A Ford Club encourages members to join both National MARC and MAFCA Clubs.



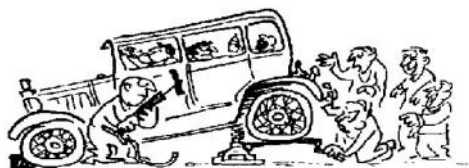
### MARC

6721 Merriman  
Garden City, MI 48315  
<http://modelarestorers.org>  
U.S. Membership Cost: \$45

← For membership information you can check MAFCA and MARC web sites. →



## LOCAL AND NATIONAL CALENDARS



### 2018 SWAP MEET & CAR SHOW SCHEDULE

April 18-22, 2018.....	Spring Carlisle Swap Meet..... <a href="http://www.carsatcarlisle.com">www.carsatcarlisle.com</a> .....	.....Carlisle, PA
April 26-29, 2018.....	Pate Swap Meet, Texas Motor Speedway.... <a href="http://www.pateswapmeet.com">www.pateswapmeet.com</a> .....	.....Fort Worth, TX
May 4-5, 2018.....	Lawrence Swap Meet at Douglas Co. Fairgrounds.....	.....Lawrence, KS
May 18-19, 2018.....	Sedgwick Street Rodders Swap Meet at Fairgrounds.....	.....Hutchinson, ,KS
May 10-12, 2018.....	Chickasha Spring Swap Meet... <a href="http://www.chickashaautoswapmeet.com">www.chickashaautoswapmeet.com</a> .....	.....Chickasha, OK
June 12-16, 2018.....	Petit Jean Swap Meet.....	.....Petit Jean, AR
July 12-14, 2018.....	Iola Old Car Show & Swap Meet.....	.....Iola, WI
August 17-19, 2018...	Ozarks Antique Auto Club Swap Meet.....Ozark Empire Fairgrounds.....	.....Springfield, MO
October 3-7, 2018...	Fall Carlisle Swap Meet... <a href="http://www.carsatcarlisle.com">www.carsatcarlisle.com</a> .....	.....Carlisle, PA
October 10-13, 2018..	Hershey Region AACA Swap Meet.....	.....Hershey, PA
October 18-20, 2018..	Chickasha Fall Swap Meet..... <a href="http://www.chickashaautoswapmeet.com">www.chickashaautoswapmeet.com</a> .....	.....Chickasha, OK
October 26-27, 2018...	Sedgwick Street Rodders Fall Swap Meet, Kansas State Fairgrounds.....	.....Hutchinson, KS
March 8-9, 2019.....	44th Annual KS Sunflower Swap Meet for Charity.....Century II	.....Wichita, KS



### 2017-2018 FUTURE REGIONAL & NATIONAL MODEL A MEETS

June 3-8, 2018.....	Midwest Regional Meet-Heart of America Model A Club.....	.....Springfield, MO
June 24-29, 2018.....	MAFCA National Convention...Northern CA Regional Group.	.....Reno Sparks, NV
June 24-July 1, 2018.....	MARC National Meet...A Dancin' In Branson A's Region....	.....Branson, MO
Sept 17-20, 2018.....	MARC "Mountain Memories National Tour".....	.....Elkins, WV
Nov 27-Dec 1, 2018....	MAFCA National Award Banquet.....	.....Tucson, AZ
March 1-3, 2019	MARC Membership Meet...Live Oaks Region.....	Richmond Hill (Savannah), GA
June 10-15, 2019.....	Central Iowa Model A Club Regional Meet.....	.....De Moines, IA
October 7-11, 2019.....	MAFCA National Tour...Canyonland Special Interest Group	..... Kanab, UT

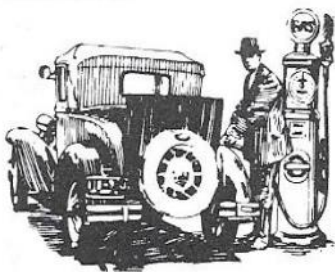
PLEASE PATRONIZE OUR ADVERTISERS

# Clarence Howland

1911 Briarcliff  
Emporia, Kansas 66801

BUY - SELL - TRADE  
Antique Cars and Parts

Cell: (620) 341-3533  
Home: (620) 342-0215



# Mishelle Whitney

mishelle@loracompany.com

624 E. Harry Street  
Wichita, KS 67211

316-263-2565 \* 1-800-554-0144

Fax 316-263-5181

www.loracompany.com

# Lorac Company, Inc.

Basement Window Well Cover \* Powder Coating  
\* Custom Metal Fab \* Media Blasting

ERIC WENINGER  
OWNER

2045 S BEDFORD ST  
WICHITA, KS 67207

316-619-1821 CELL  
316-685-2553 SHOP

info@modelamedic.com

www.modelamedic.com

www.facebook.com/modelamedic

# THE MODEL A MEDIC LLC



NEW AND USED MODEL A FORD PARTS

SPECIALIZING IN FULL SERVICE REPAIRS  
AND RESTORATION

# BRASSWORKS

Aries Mufflers



New and Used Antique Parts

# MILT'S MODEL 'A' REPAIR, PARTS & SALES

F.S. Modern Ignitions • Mitchell Overdrive  
Overdrive & 4-Speed Transmissions Installed

403 Cypress St  
Grain Valley, MO 64029  
hesfrt@sbcglobal.net

Milton Hessfort  
Cell 816-590-4317

# Z Model A Parts - Zanes

Ron and Sondra Kester, Owners

773 Central Street

Glade, Kansas 67639

Phone: 785-543-6729

Fax: 785-543-3013

e-mail: 2officegirls@ruraltel.net

# ELLERMAN SPEEDOMETERS



STEWART-WARNER FOR  
FORD MODEL A  
OVAL OR ROUND  
RESTORATION



DENNIS ELLERMAN  
316.722.2107 OR  
316.765.1506

ELLERMANSPEEDOMETERS@COX.NET

BLOW YOUR MONEY  
ON CARS  
— NOT INSURANCE —



SHARP INS AGENCY

Phone:  
(316) 788.5257

Address:  
1721 E Osage, Suite 100  
Derby, KS 67037

JIM & JUDI SHARP

HAGERTY  
CLASSIC CAR INSURANCE

# B&B Electric Motor Co.

Your One Stop Industrial Service Center

New • Repair • Rewind  
Electric Motors • Pumps

Phone (316) 267-1238 • 1-800 499-1238  
Fax (316) 267-0599 • Emergency (316) 641-0806  
email: bbemc@msn.com • bbelectricmotor.com

332 Lulu  
Wichita, KS 67211

Ed Giesen  
Customer Service

Wichita A's Model A Ford Club  
P.O. Box 25  
Wichita, KS 67201



Address Service Requested

---

### Wichita A's Model A Ford Club Contacts

**President**, Randy Frazer

[president@wichitaas.com](mailto:president@wichitaas.com).....

**Vice President**, Mike James

[vicepresident@wichitaas.com](mailto:vicepresident@wichitaas.com)....

**Secretary**, Dawna Ruggles

[secretary@wichitaas.com](mailto:secretary@wichitaas.com).....

**Treasurer**, James Sharp

[treasurer@wichitaas.com](mailto:treasurer@wichitaas.com).....

**Tour Chairman**, Don Grabendike

[tourchair@wichitaas.com](mailto:tourchair@wichitaas.com).....

**Membership**, Susan Stone

[membership@wichitaas.com](mailto:membership@wichitaas.com).....

**Newsletter Editor**, Sheila Orr

[editor@wichitaas.com](mailto:editor@wichitaas.com).....

**Webmaster**, Darren Schuster

[webmaster@wichitaas.com](mailto:webmaster@wichitaas.com)

The Rumbleseat Review is the official publication of the Wichita A's Model A Ford Club, Inc., a local chapter of the Model A Ford Club of America and the Model A Restorers Club. Its purpose is to keep members informed of past, present and future events, activities, and club news. In addition, this newsletter includes articles and other information to aid in the restoration and enjoyment of the Model A Ford automobile.

This publication is mailed or emailed to members, prospective members and editors of similar publications prior to monthly meetings. Meetings are usually the fourth Monday of the month. Members may publish antique car related ads only for free of charge which includes items wanted, items for sale, or items for trade. We invite members to submit articles containing technical Model A information and other interesting tidbits for publication in this newsletter. Items to be published must be submitted to the newsletter editor by deadline shown in the calendar. Wichita A's membership dues are \$25.00, per year (October to September 30). MAFCA dues are \$50.00 per year and MARC dues are \$45.00 per year. A business card advertisement in this newsletter is \$25.00 per year.